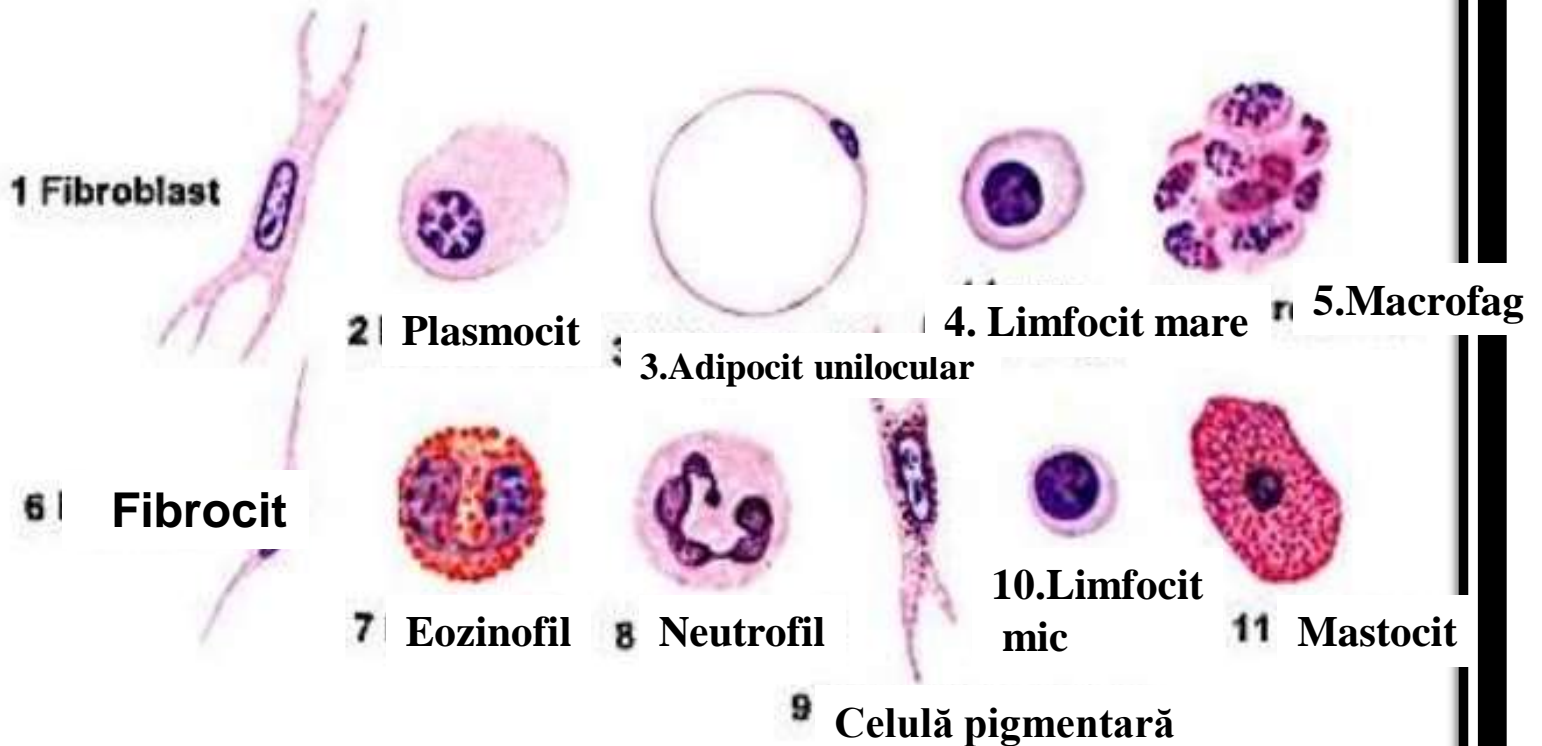




TESUTURILE CONJUNCTIVE

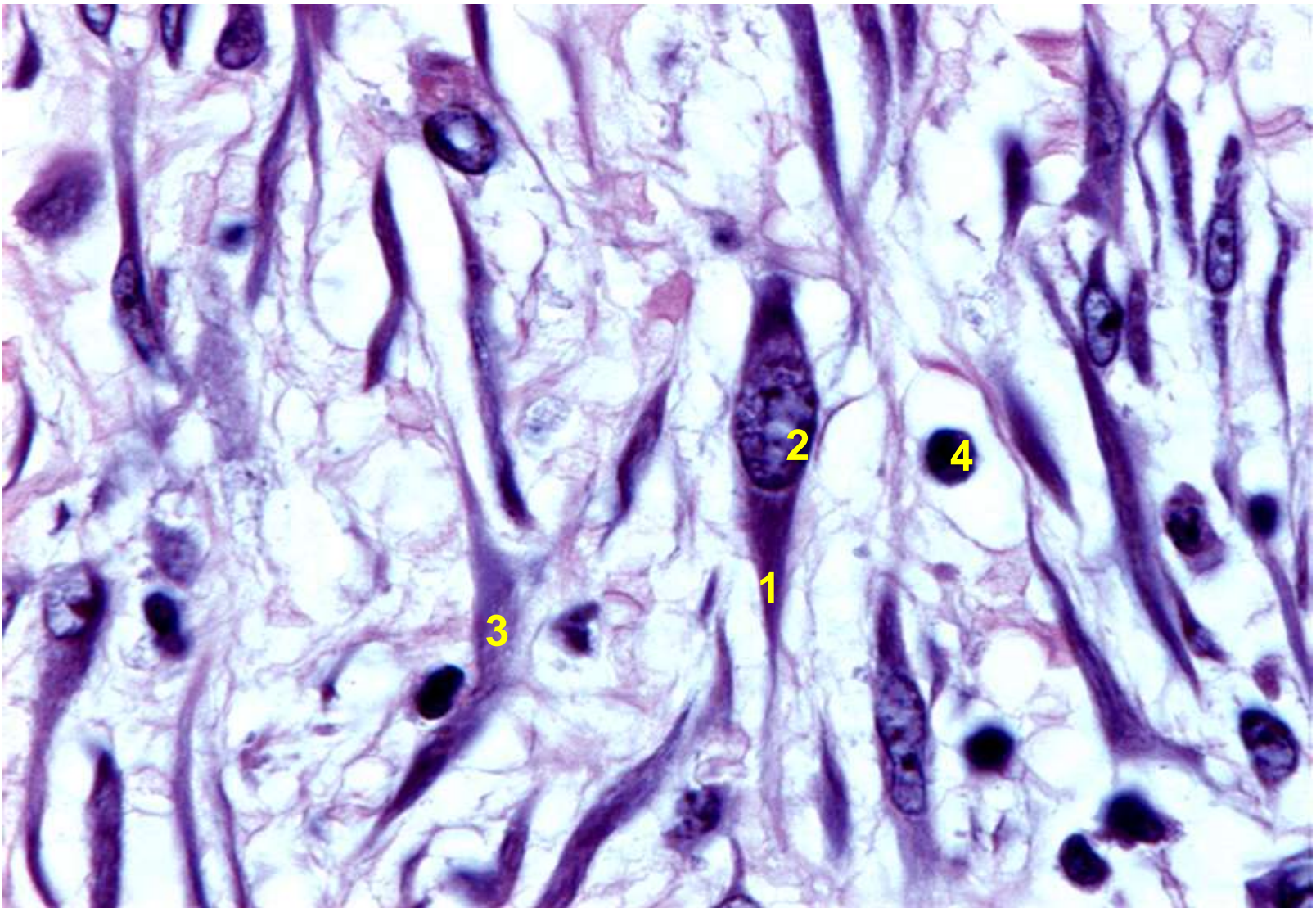


CELULELE ȚESUTULUI CONJUNCTIV



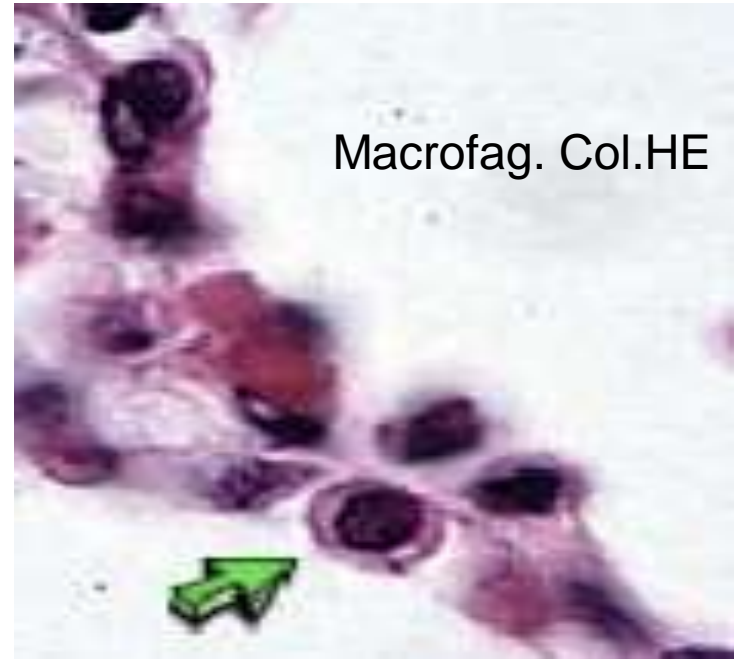


Celule mezenchimale . Coloratie Hematoxilina-Eozina

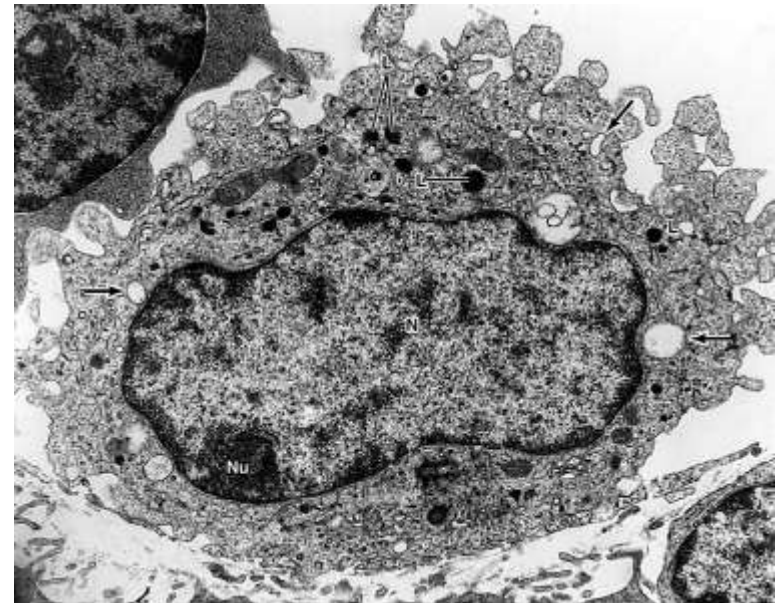


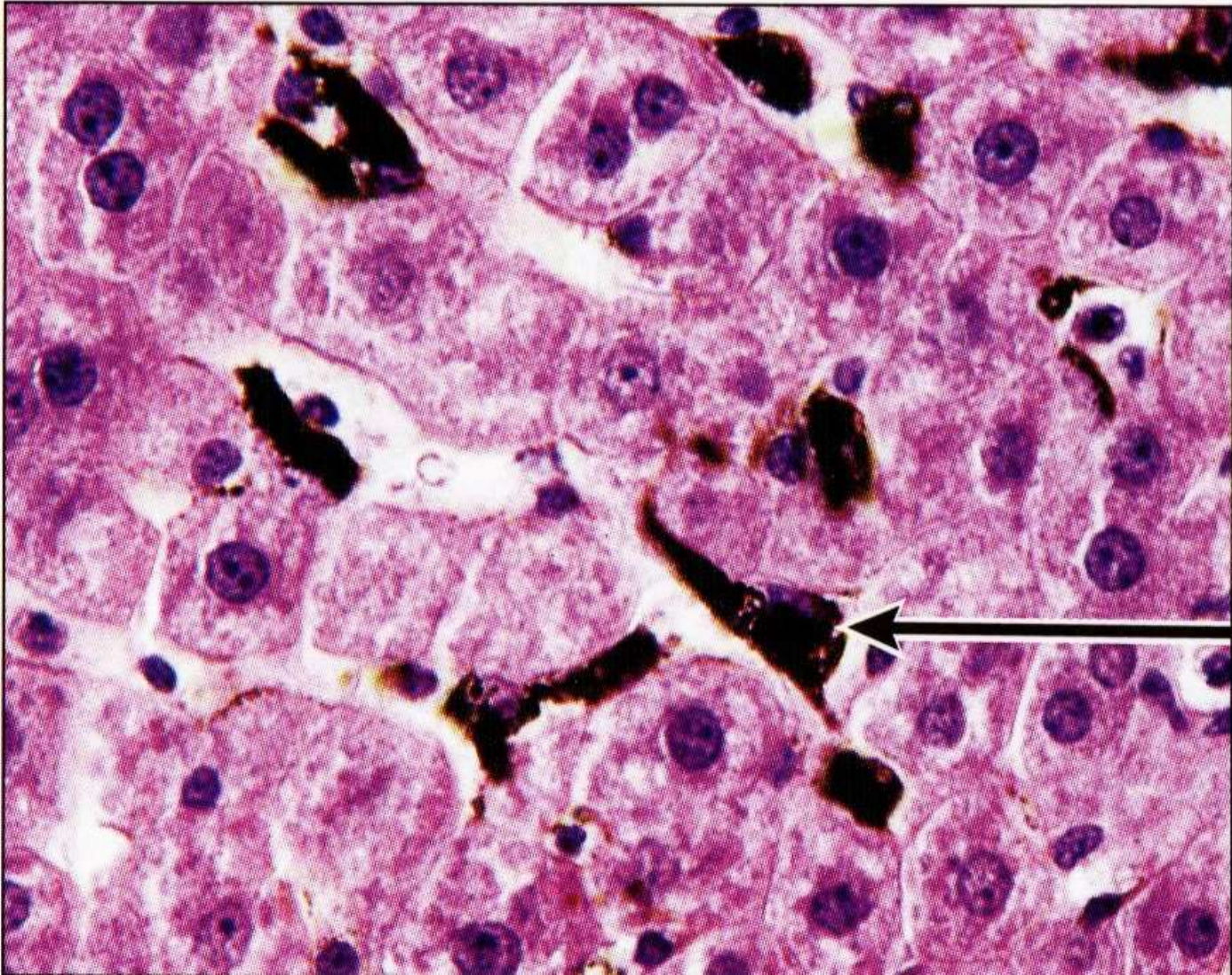
Tesut conjunctiv. Col. HE

1. fibroblast
2. nucleul fibroblastului (hipocrom)
3. fibrocit
4. limfocit

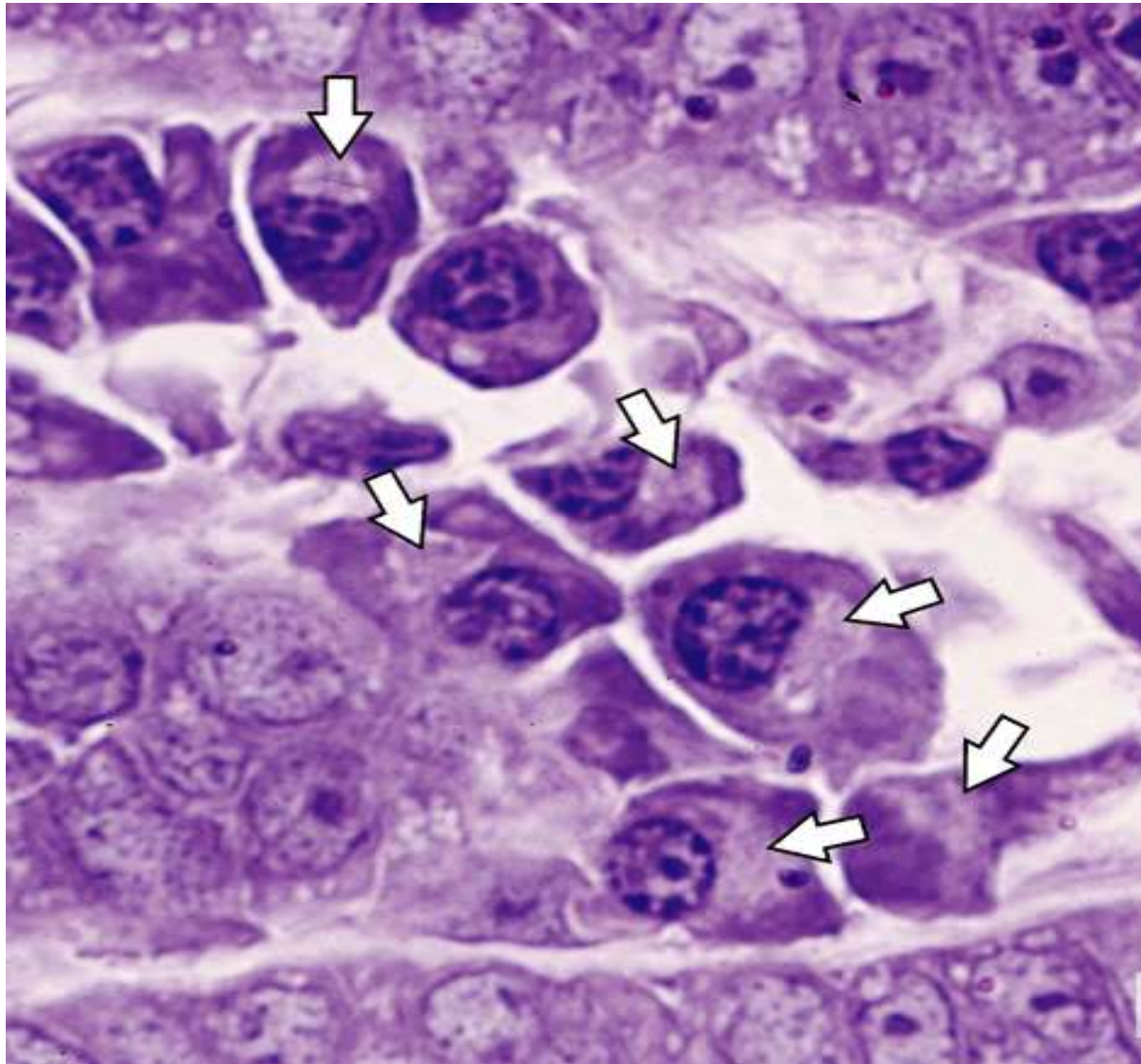


Macrofag. Microscop electronic

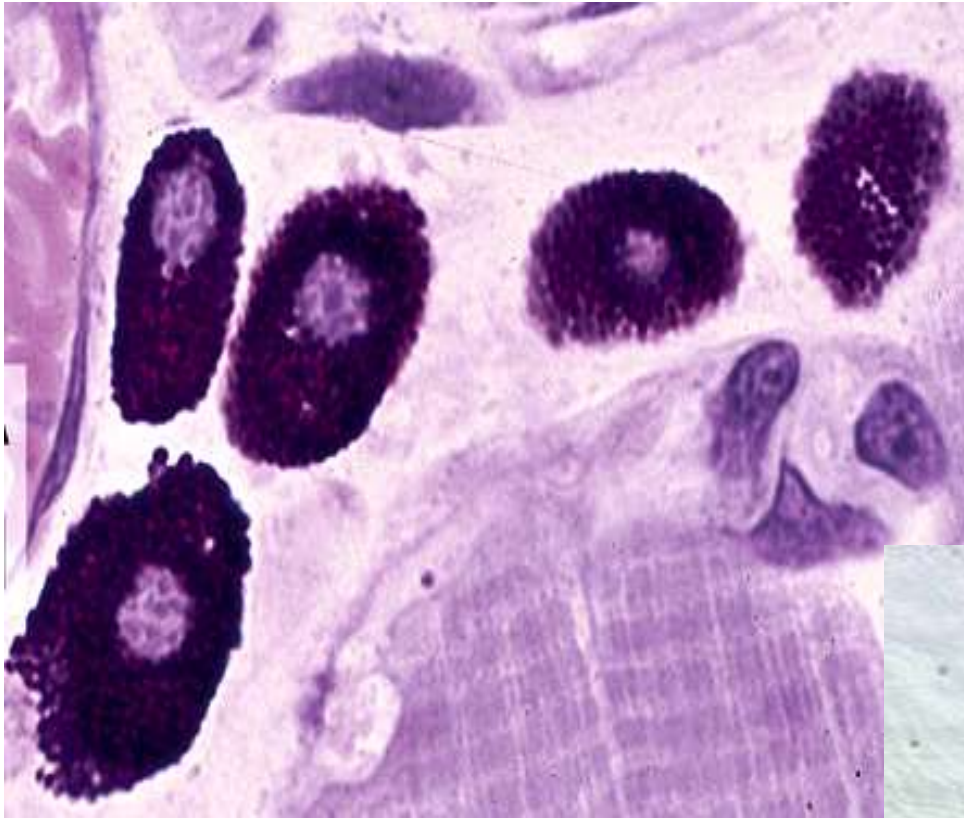




Ficat. Col.HE
Macrofage (celule Kupffer)

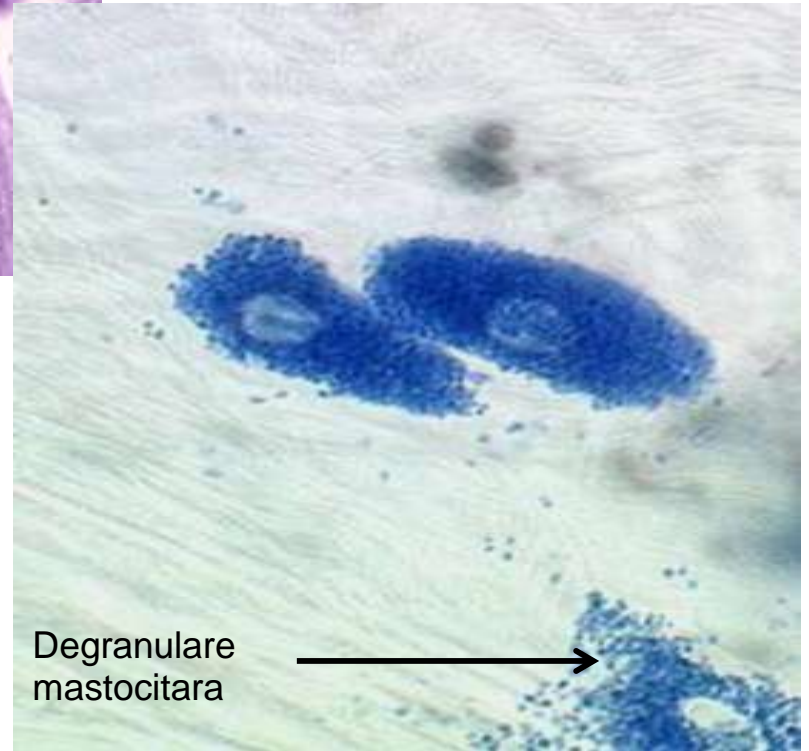


Plasmocite. Col.HE

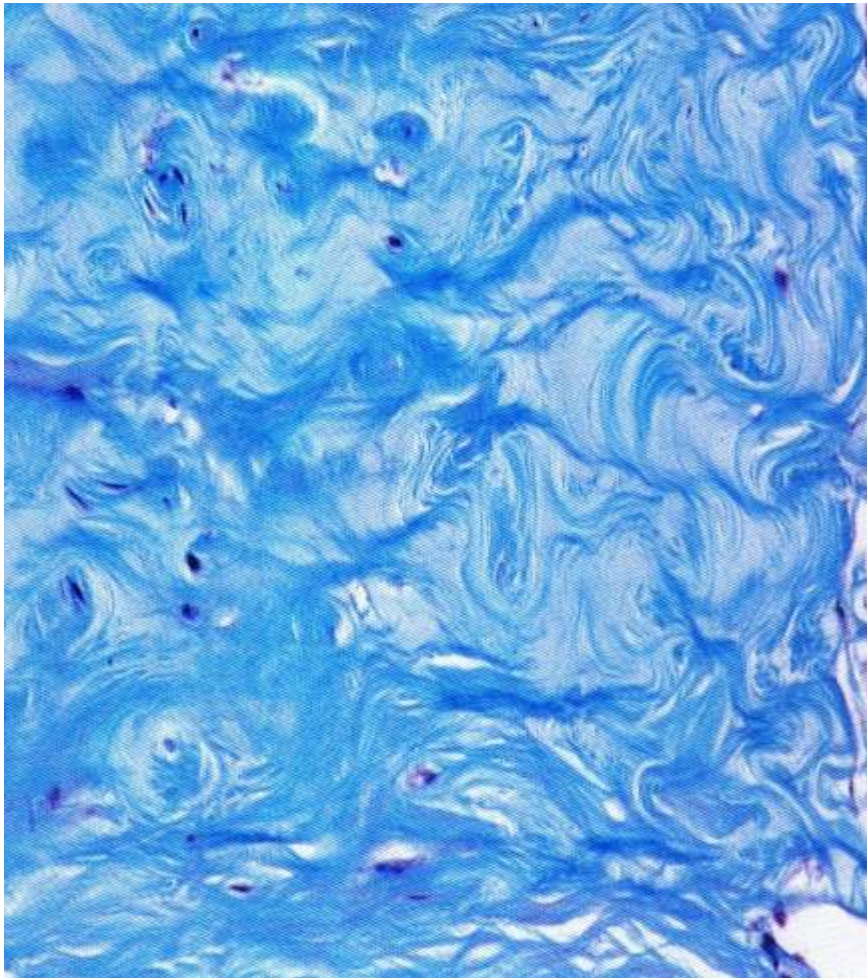


Mastocite.

Mastocite. Col. Albastru de metilen

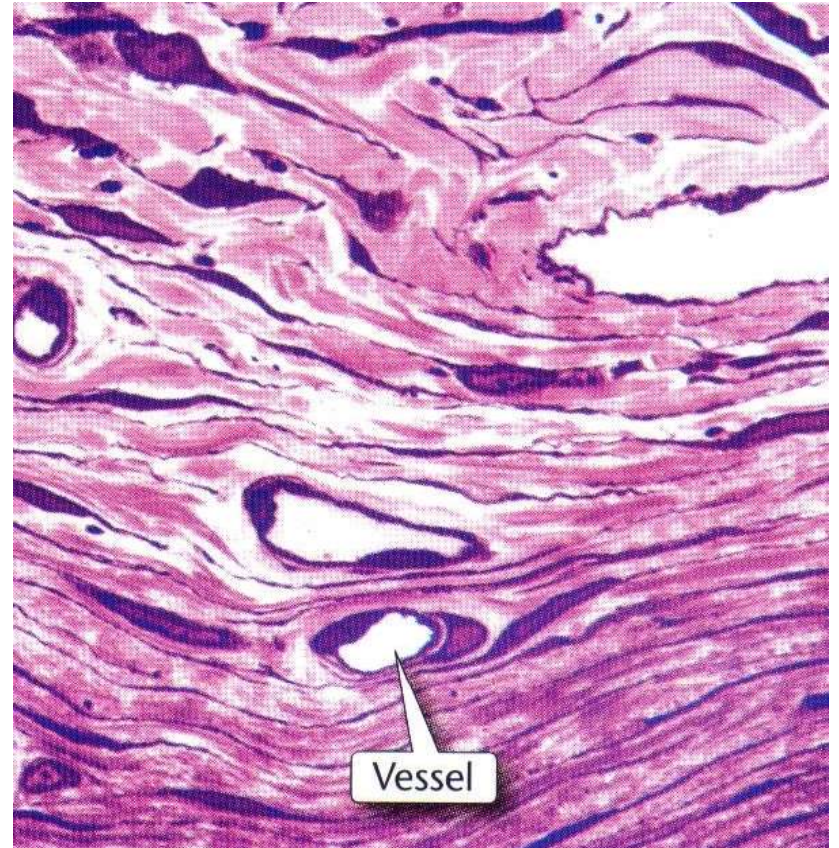


Degranulare
mastocitara



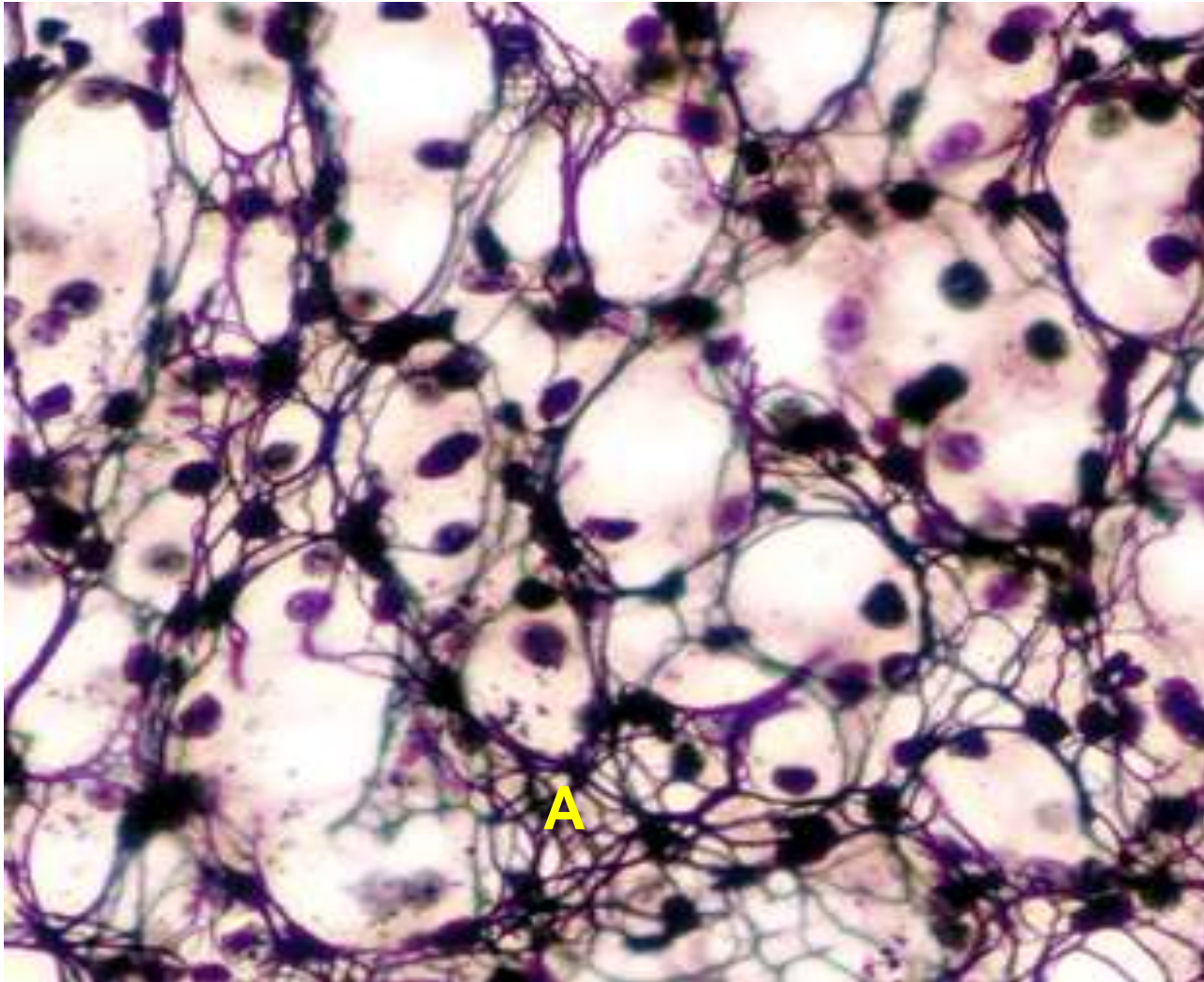
Tesut conjunctiv. Fibre de colagen (albastre). Coloratie tricromic Masson

Tesut conjunctiv. Fibre de colagen (roz). Col. HE

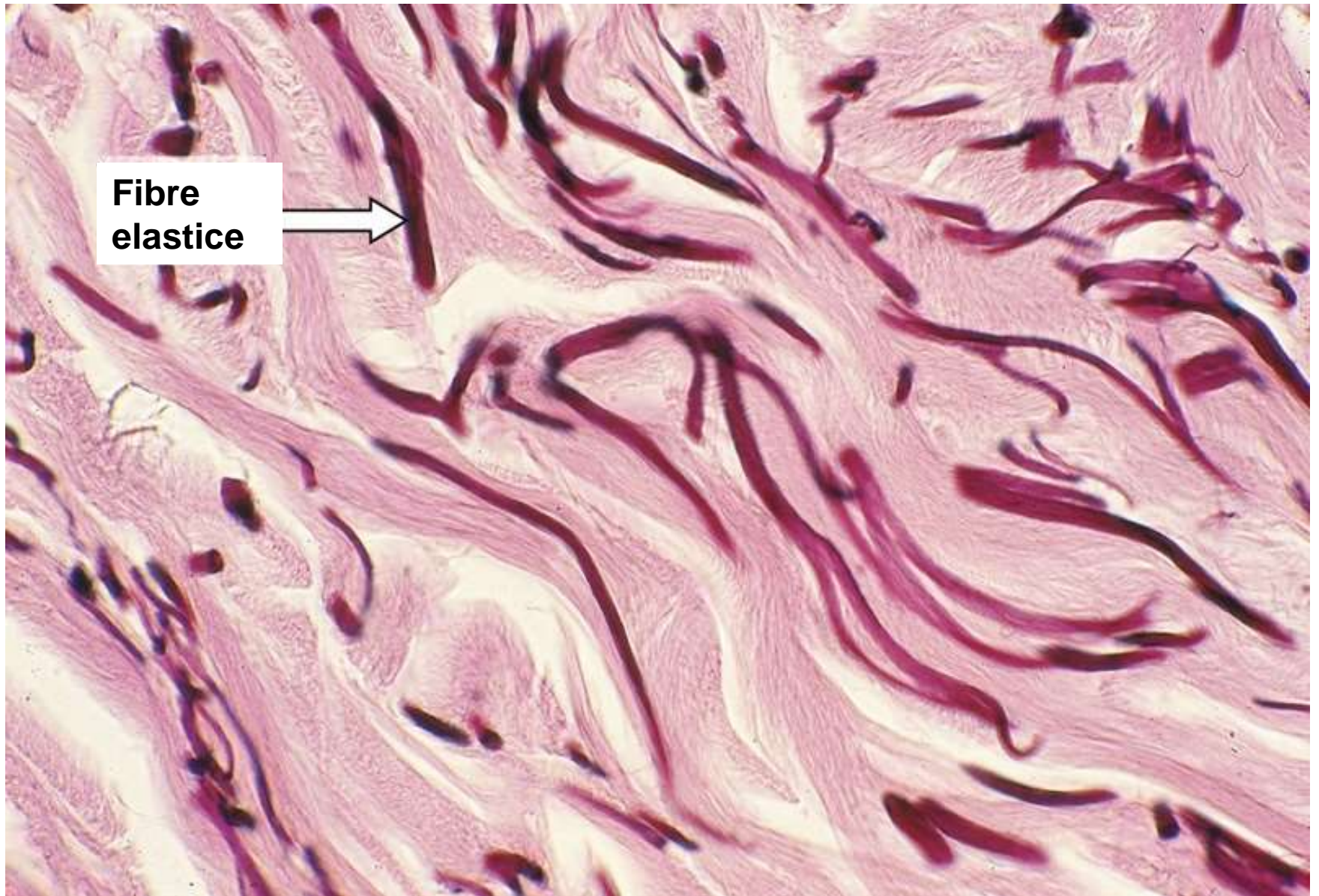




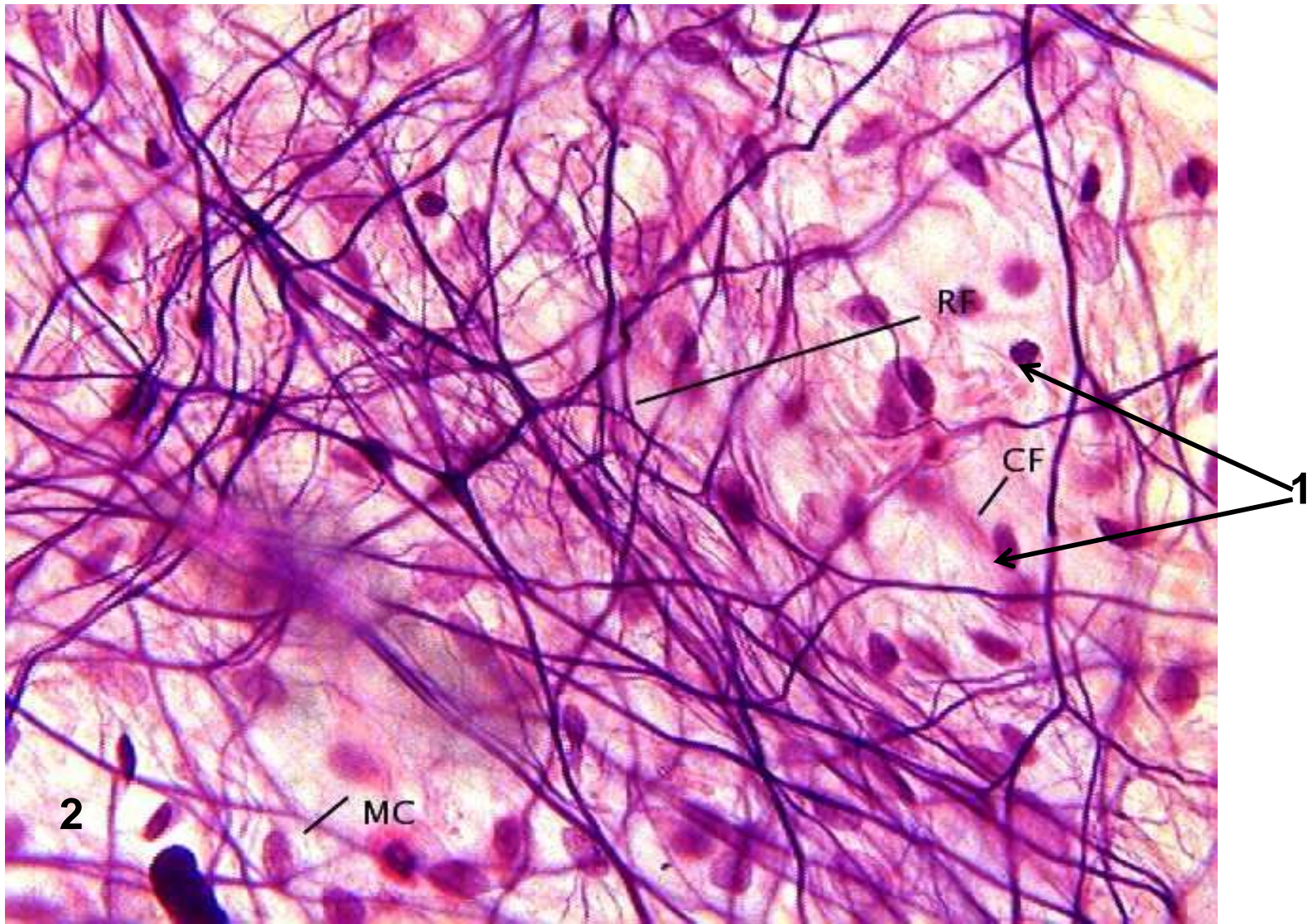
Ficat. Coloratie tricromic Masson
A. Fibre de colagen colorate albastru (stroma)



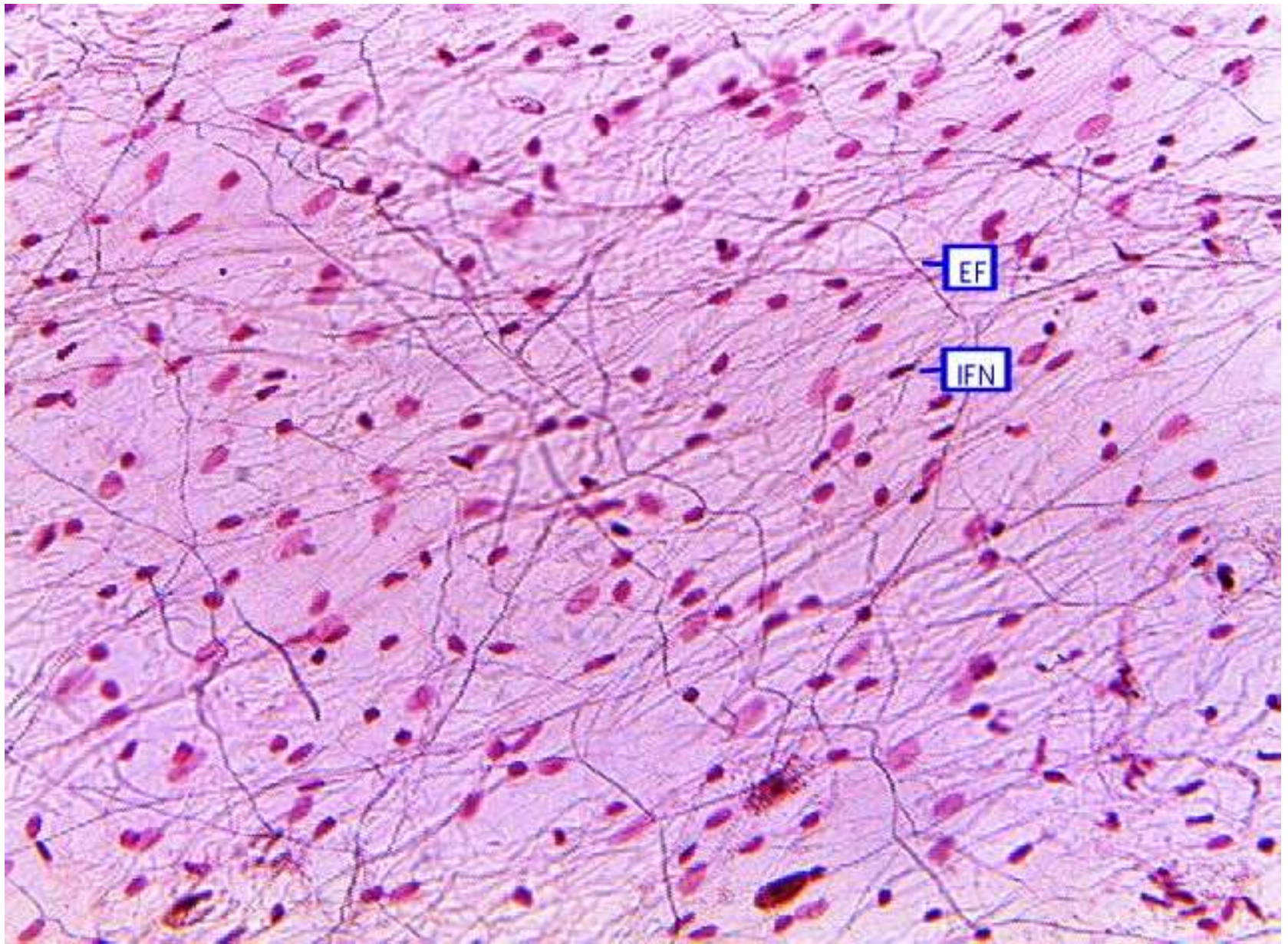
Stromă specifică - organ limfoid (citofibroreticul stromal). Impregnație argentică
A. fibre de reticulină colorate în negru



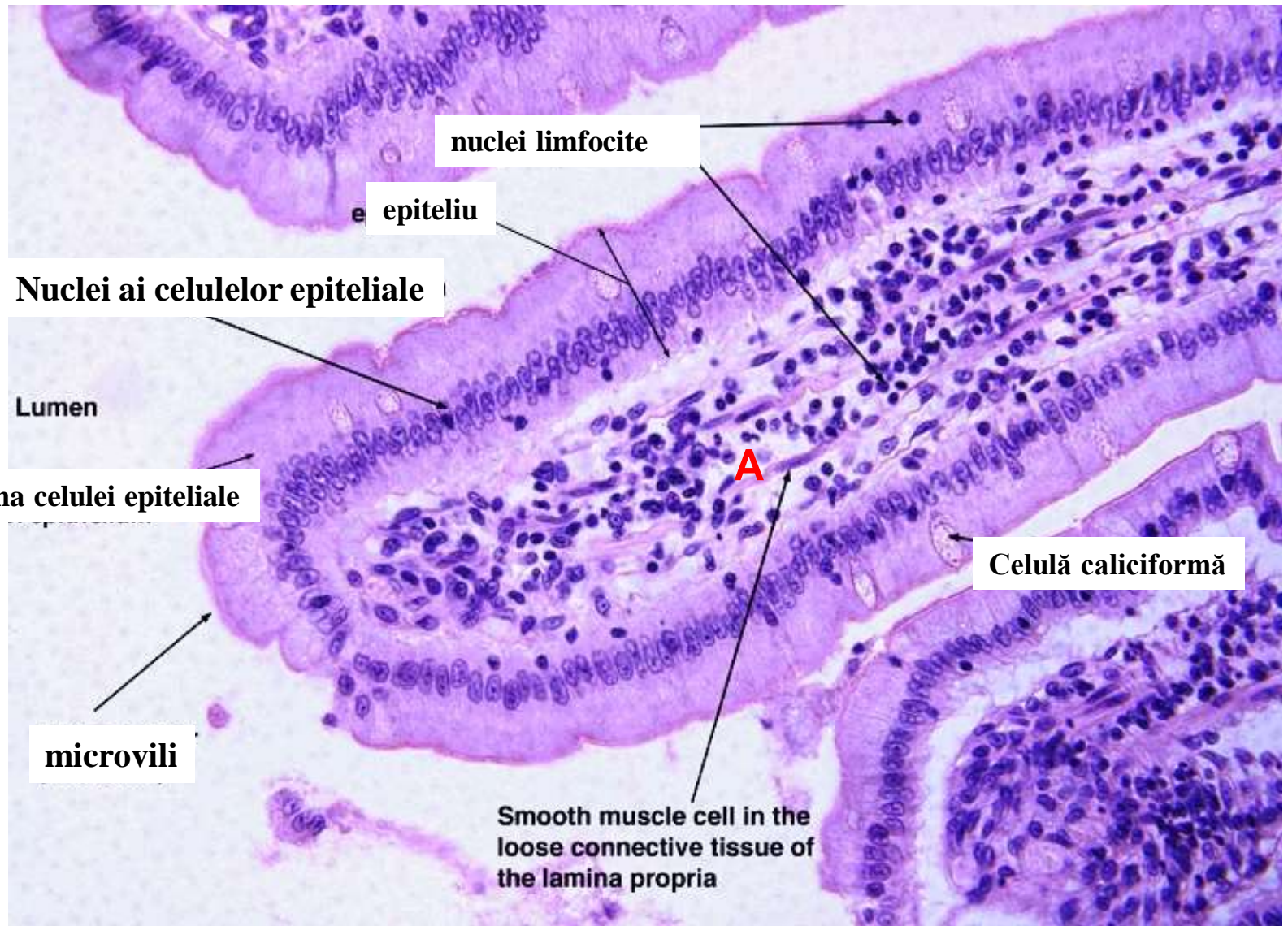
Fibre elastice. Derm. Colorație cu orceină



Tesut conjunctiv lax



Tesut conjunctiv lax. Col. HE

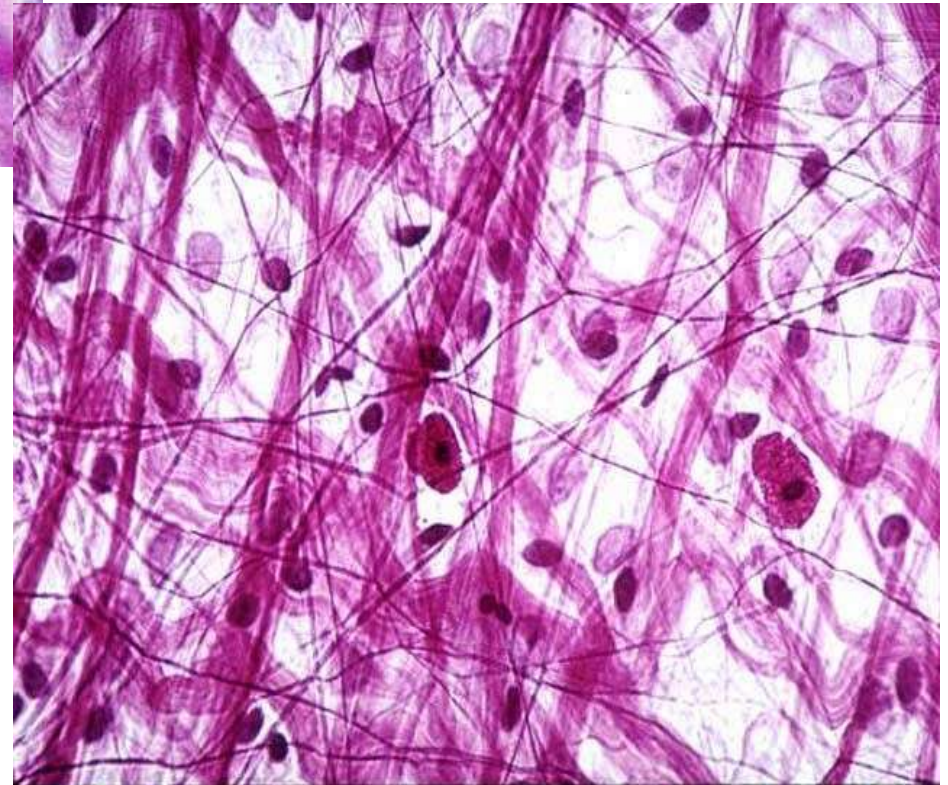


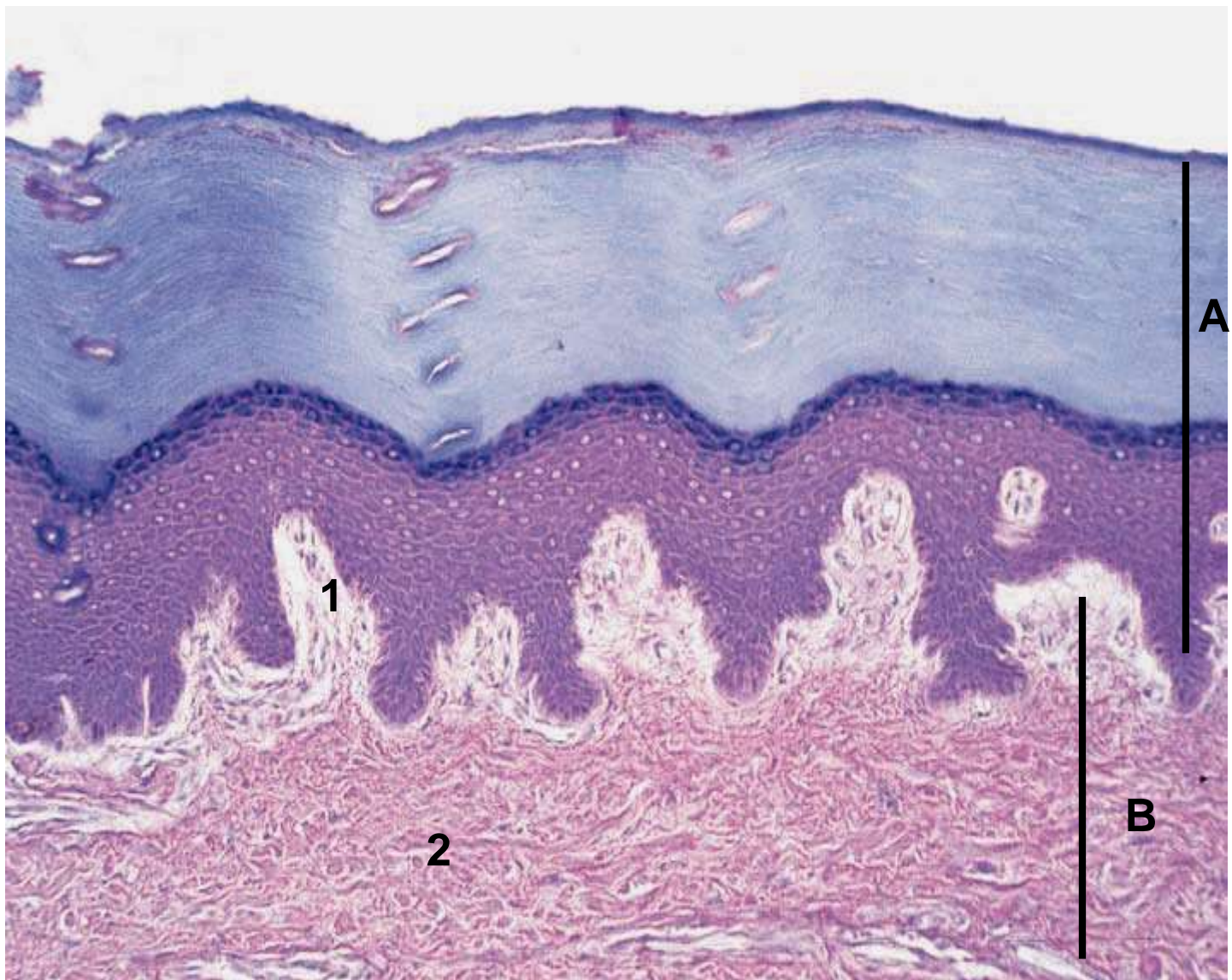
A. Tesut conjunctiv lax (lamina propria). Corion de apărare. Vilozități intestinale. Intestin subțire. Col.HE



Tesut conjunctiv. Degranulare mastocitară. Col.HE

Tesut conjunctiv lax. Col.HE

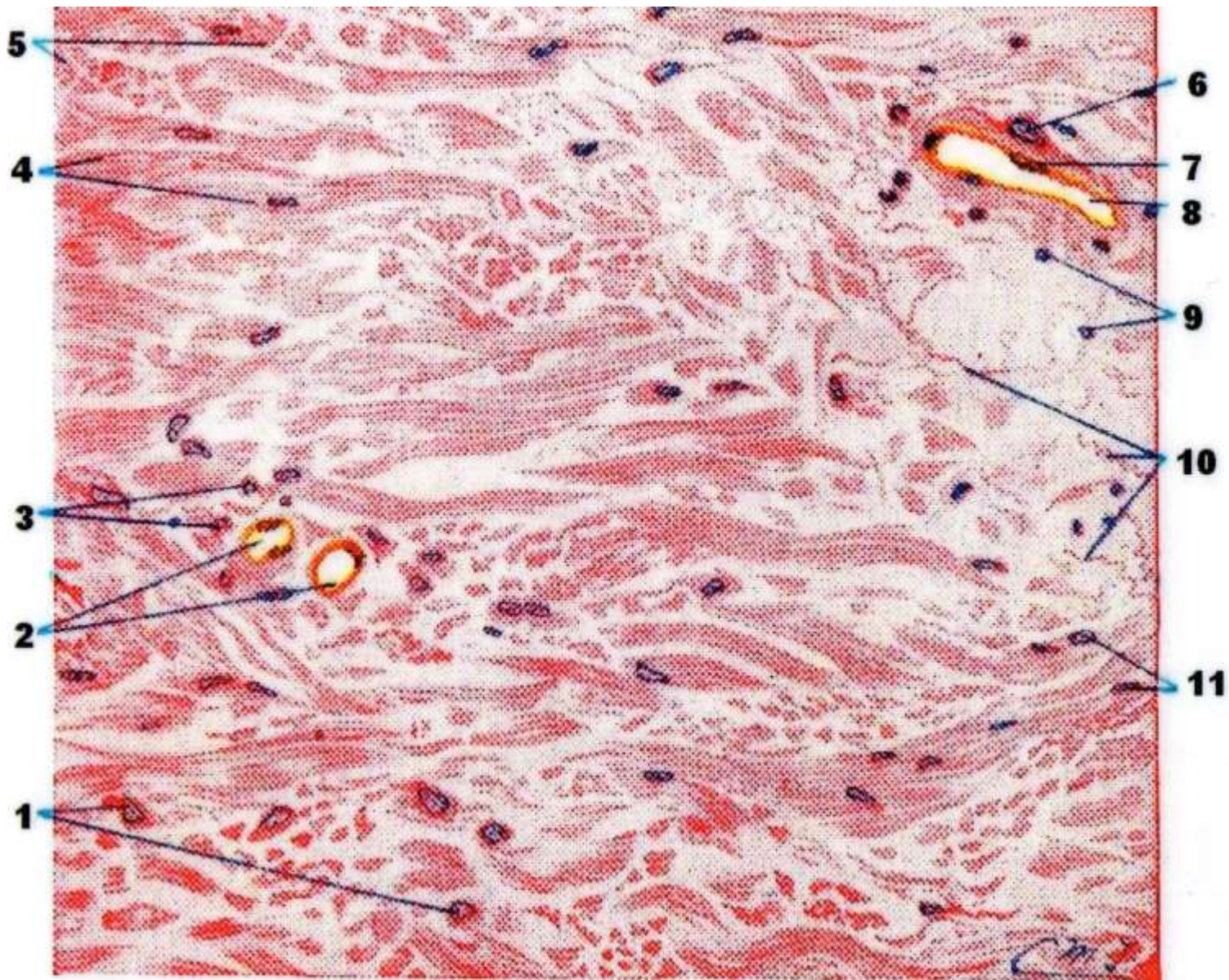




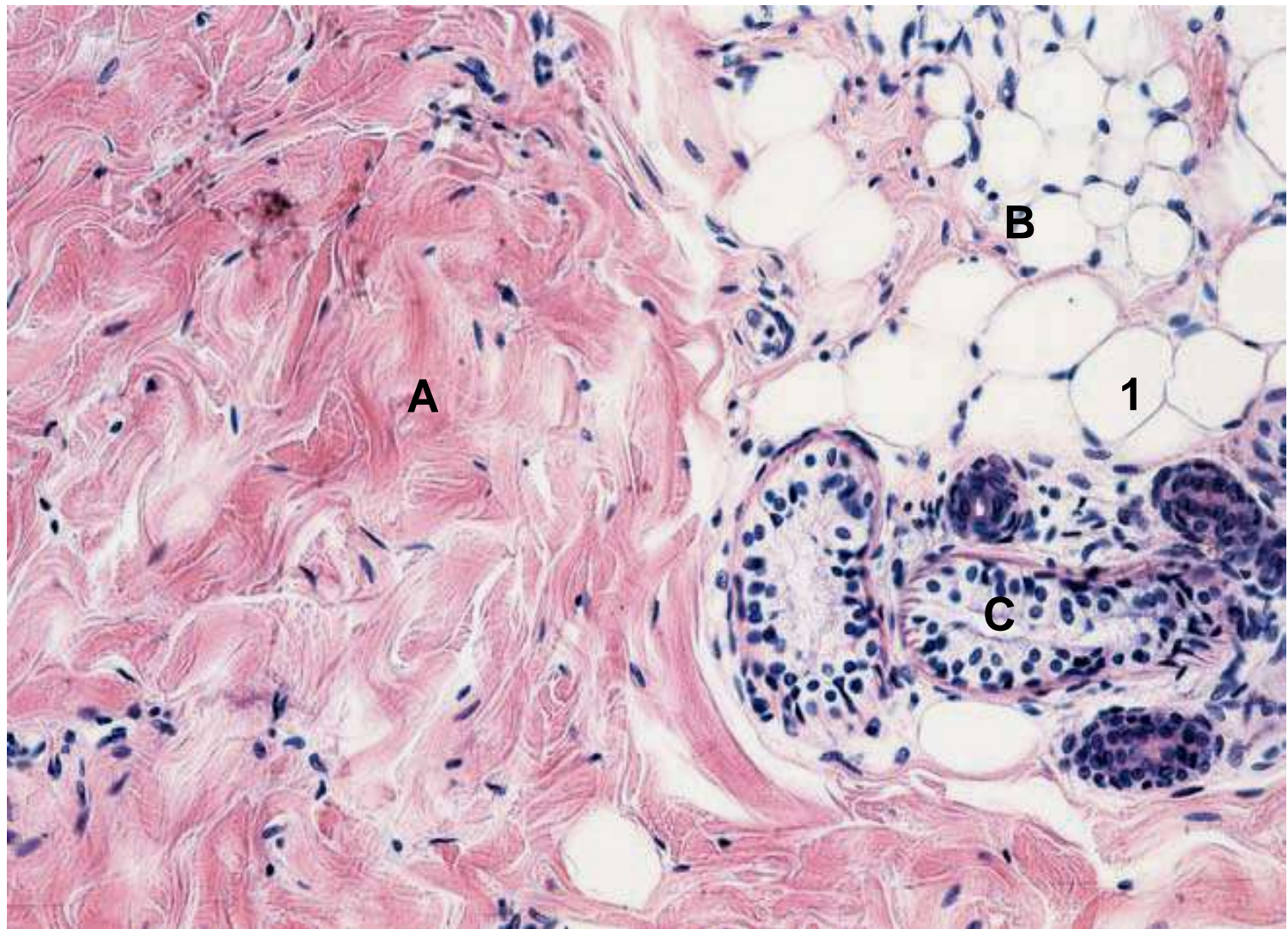
Coloratie tricromică

A. Epiderm

B. Derm

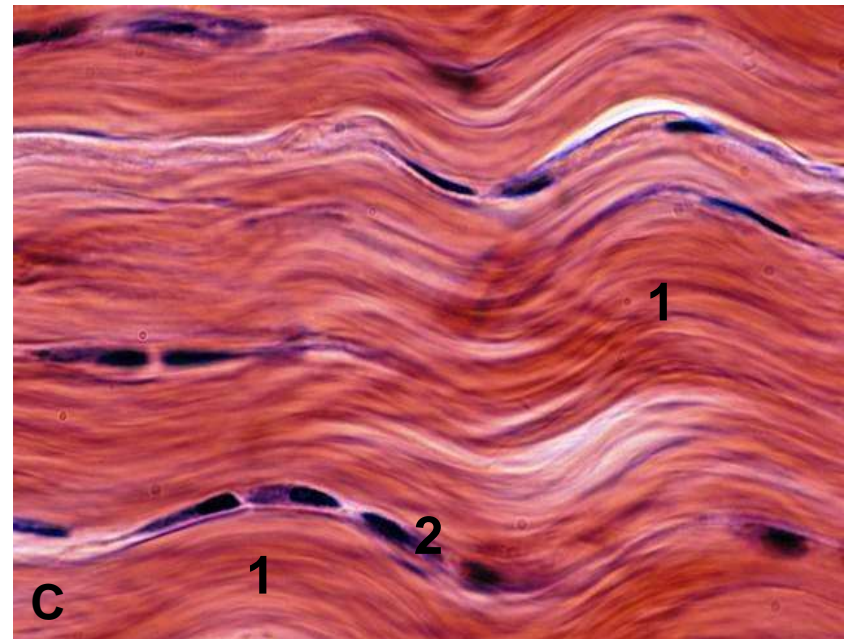
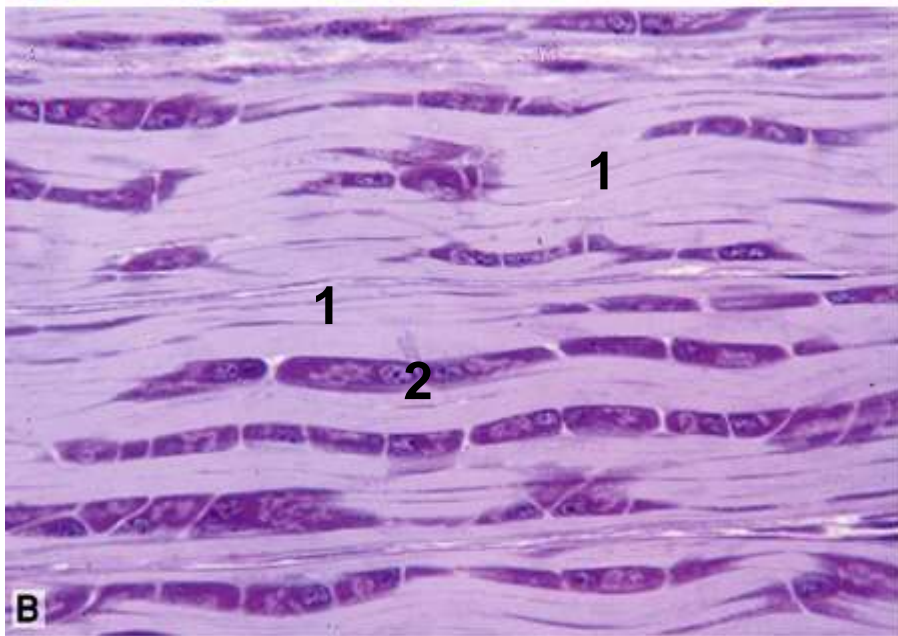
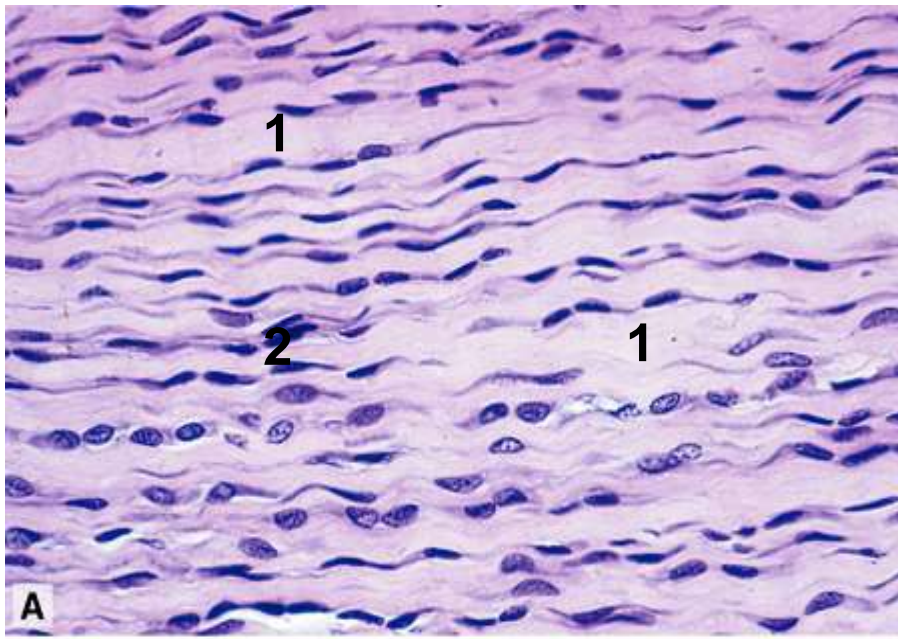


Tesut conjunctiv dens neordonat bogat in fibre de colagen.
Col.HE



Coloratie HE

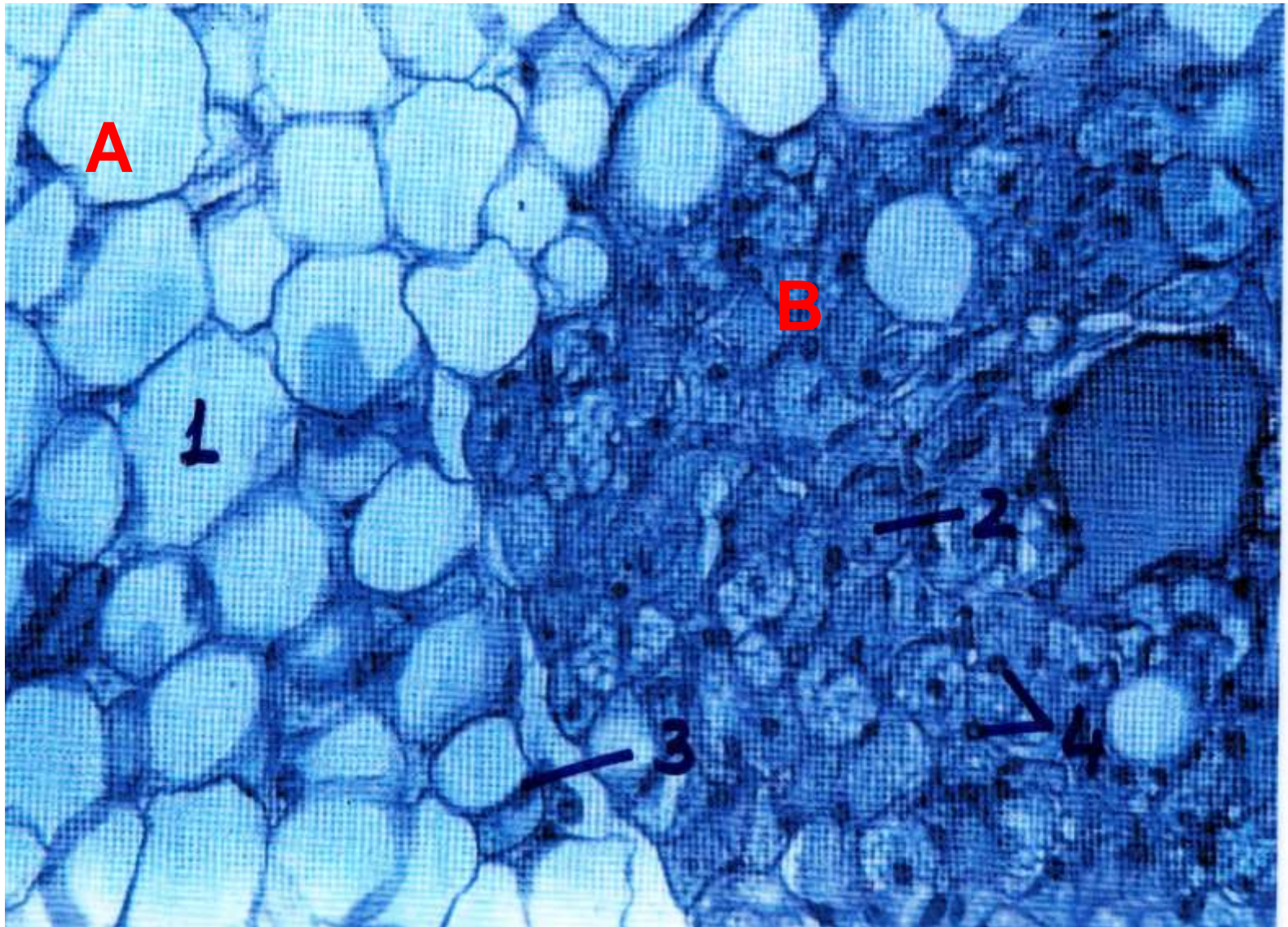
- A. derm profund – Identificati tipul de tesut conjunctiv
- B. țesut adipos unilocular
- C. glandă sudoripară



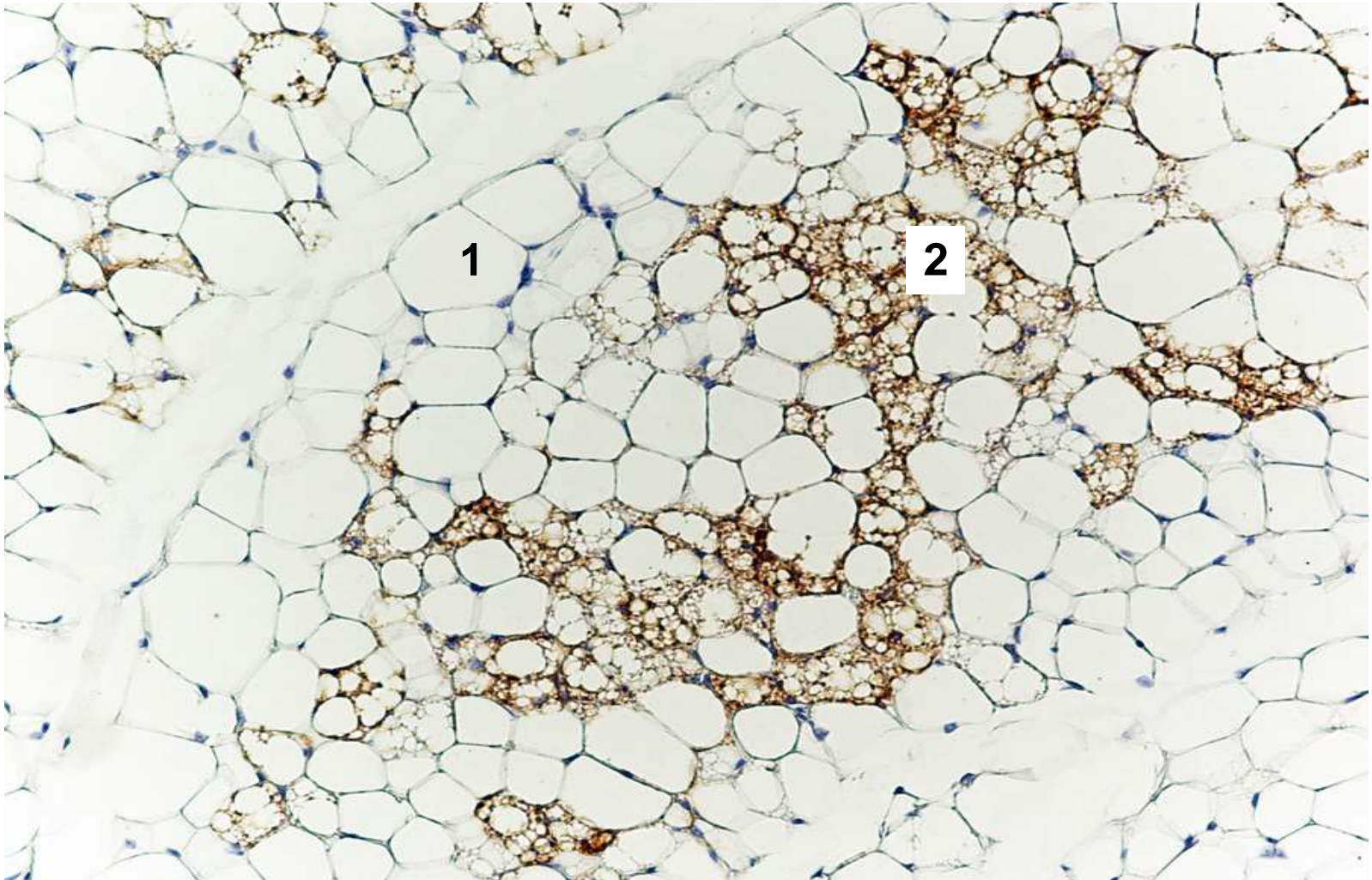
A,B,C. Tendon.



Tesut adipos unilocular. Col. HE

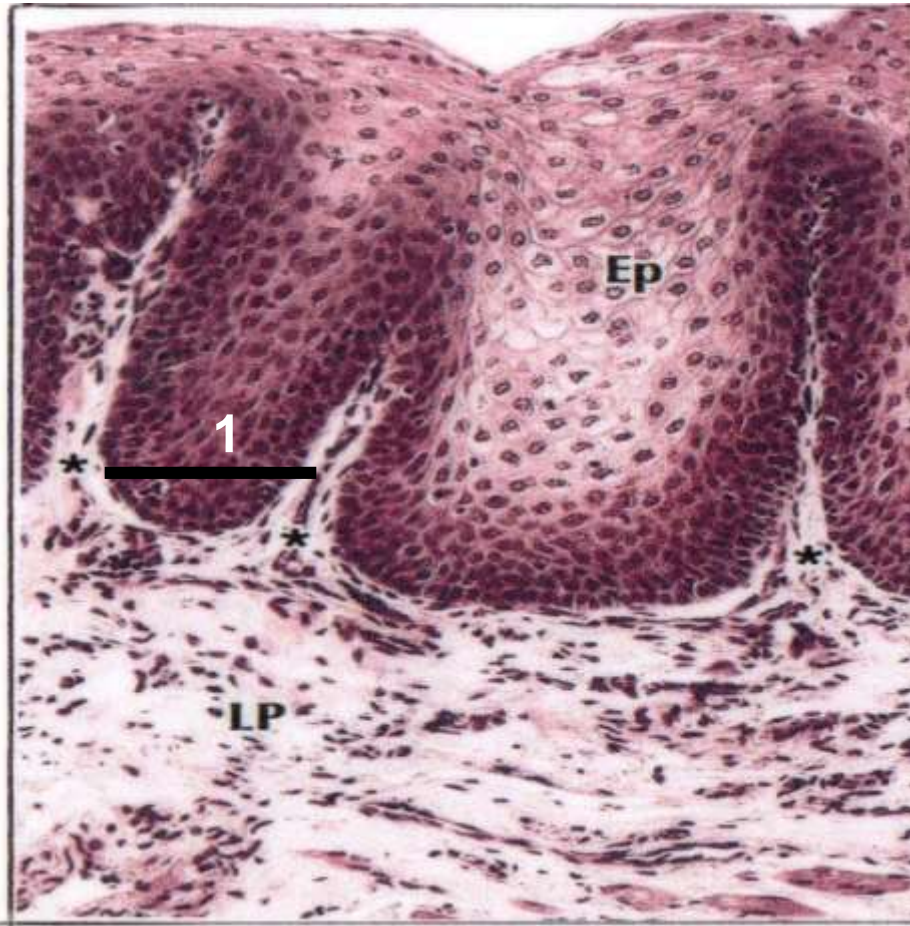


Tesut adipos unilocular (A) și multilocular (B). Col. cu albastru de toluidină

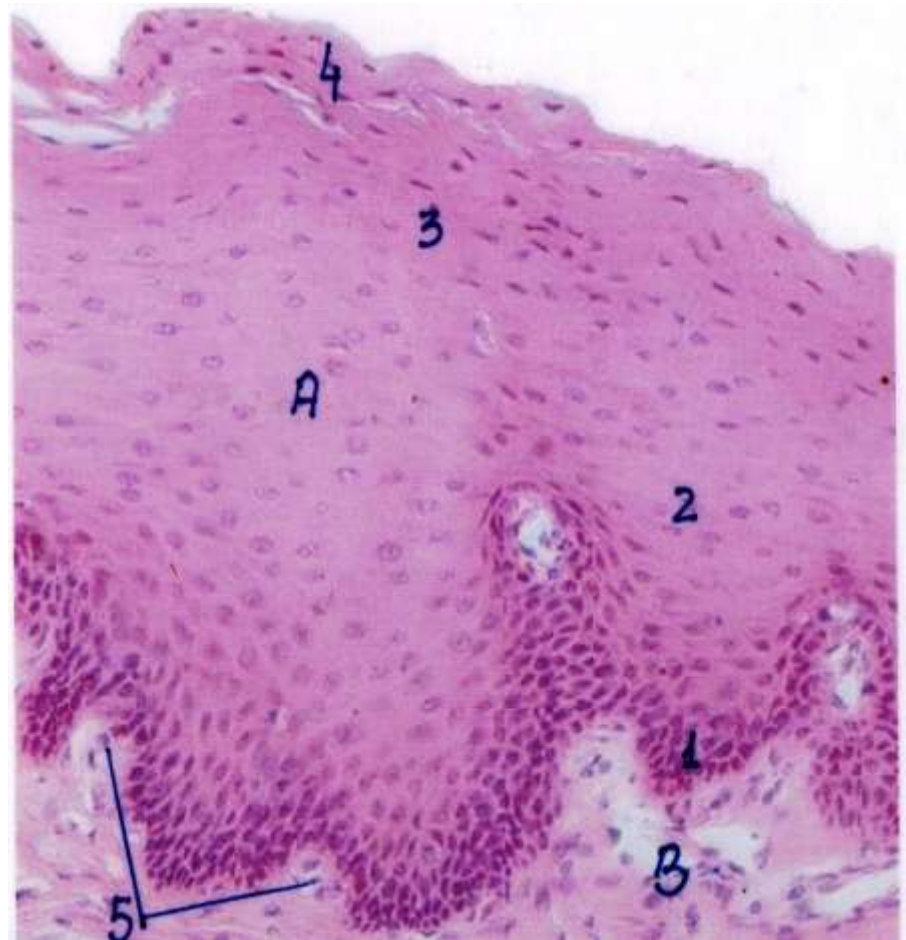


Țesut adipos unilocular și multilocular. Reacție imunohistochimică pentru marcajul adipocitelor multiloculare. Identificați elementele numerotate

MUCOASE ȘI SEROASE



Mucoasa orală. Col. HE
IDENTIFICAȚI TIPUL DE EPITELIU

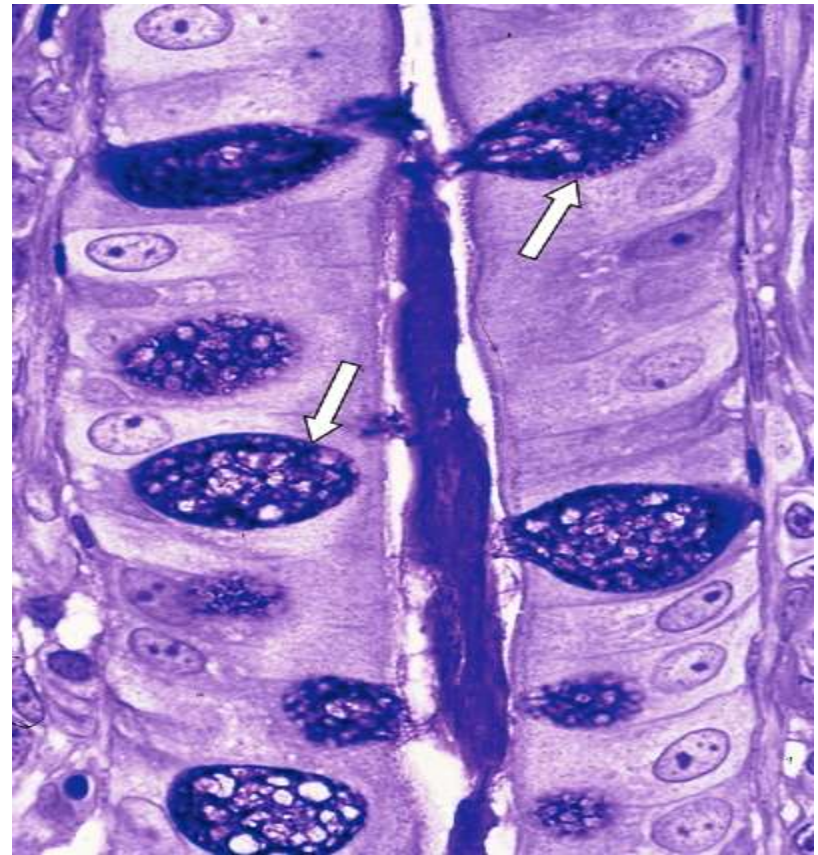


MUCOASĂ ORALĂ
IDENTIFICAȚI COLORAȚIA
ȘI ELEMENTELE
MENȚIONATE

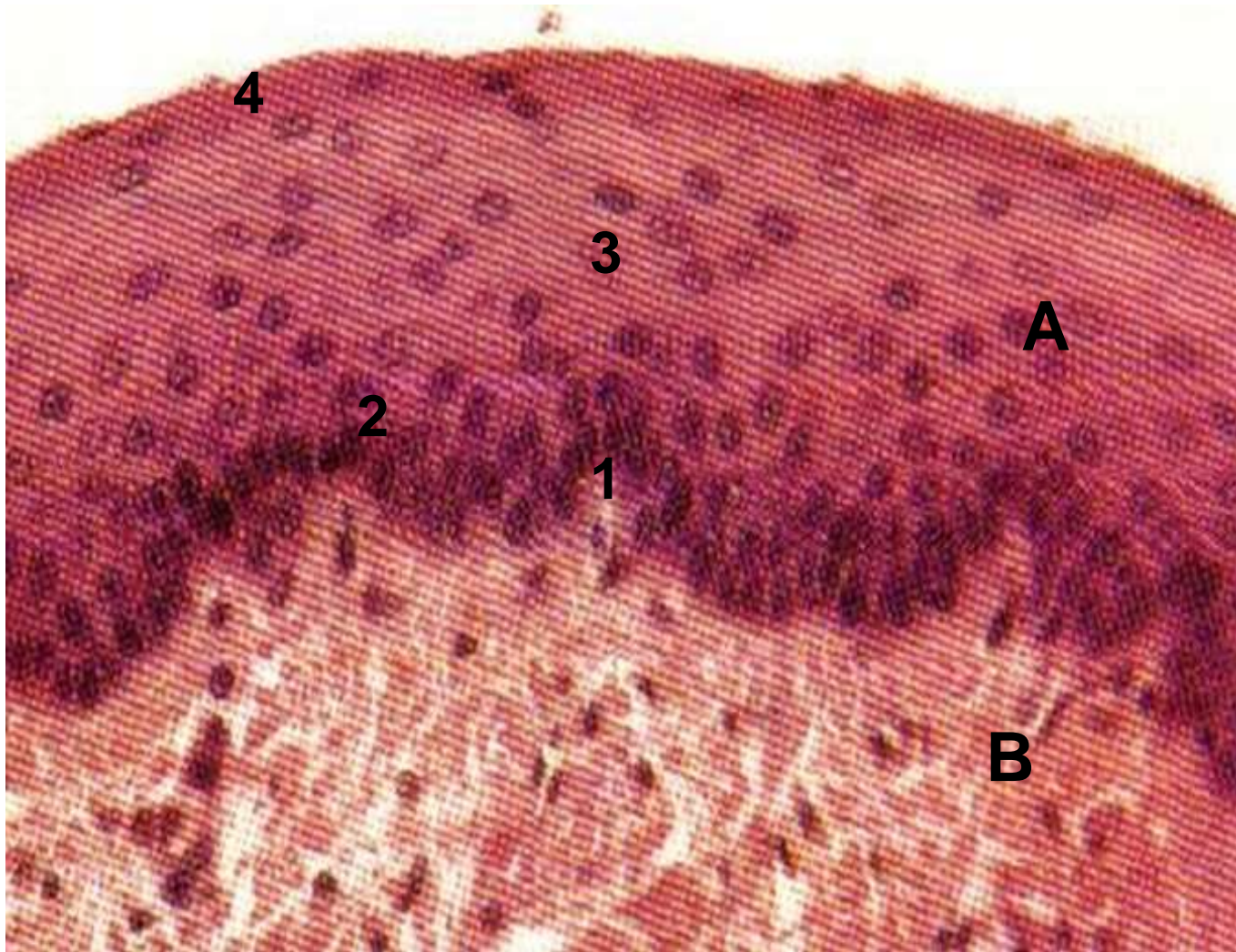


Schemă

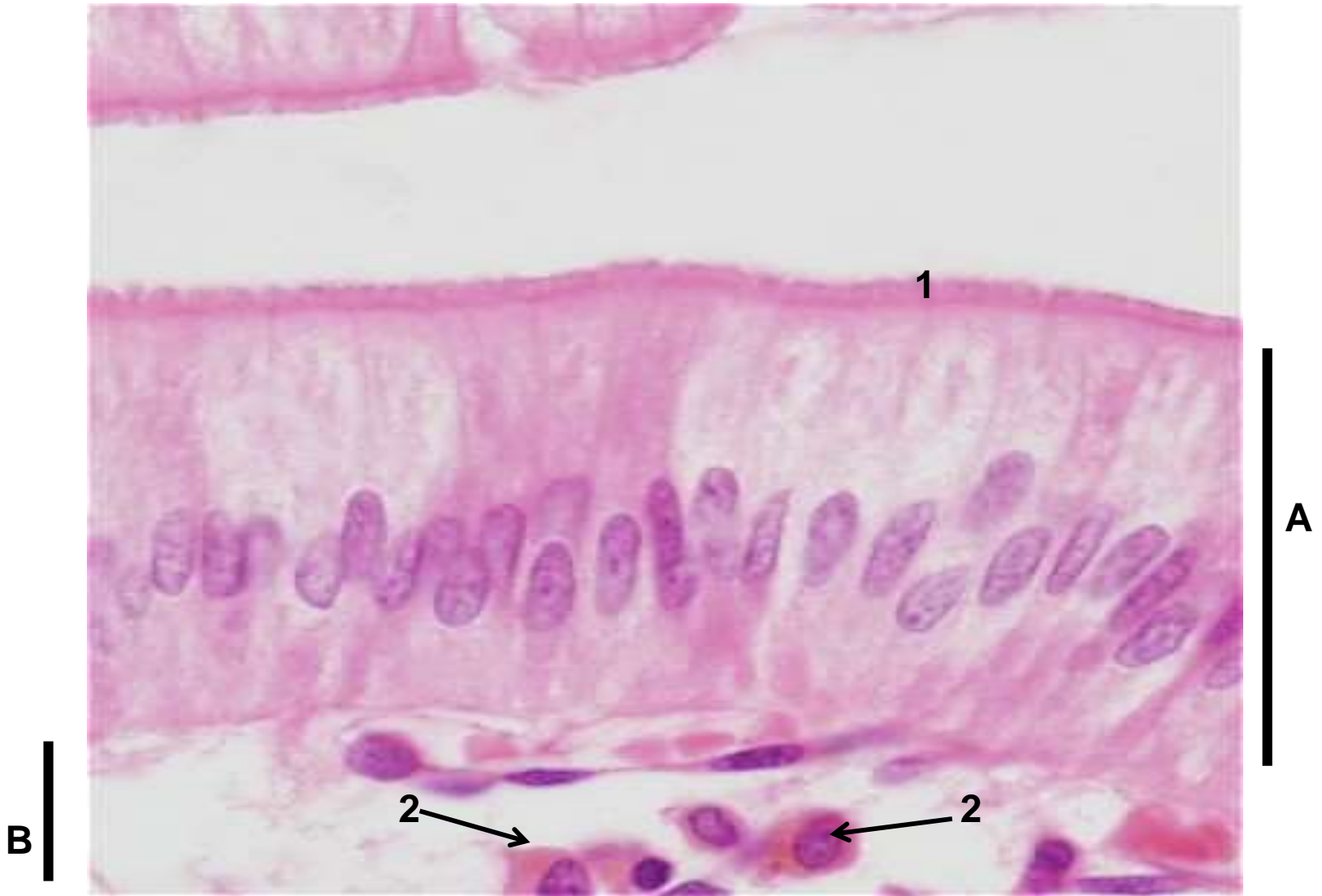
- A. Glande gastrice cardiale – glande tubulare drepte care devin sinuoase in profunzime
- B. Glande gastrice fundice – glande tubulare sinuoase



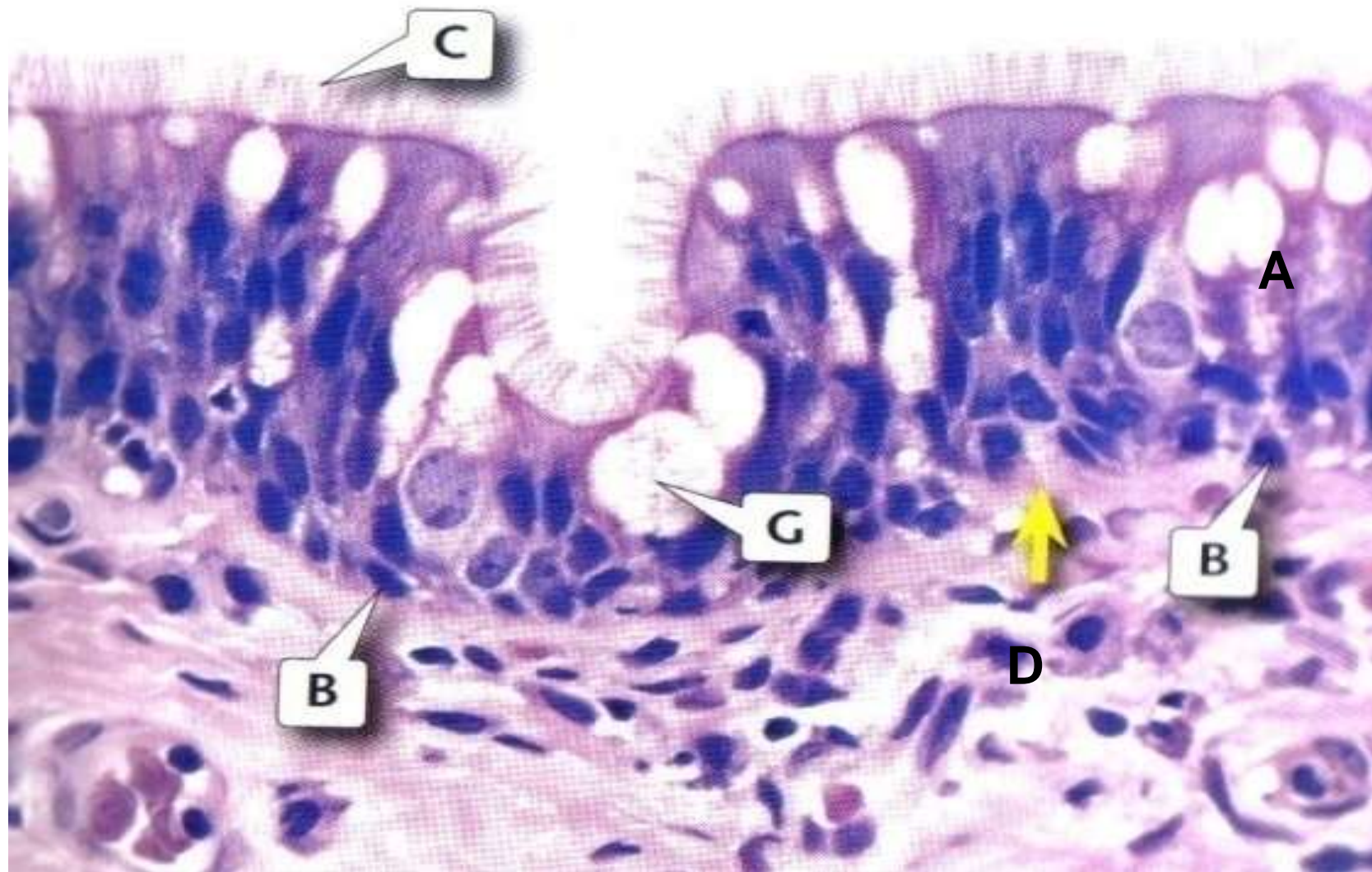
Glanda exocrina tubulară dreaptă.
Glanda intestinala Lieberkuhn.



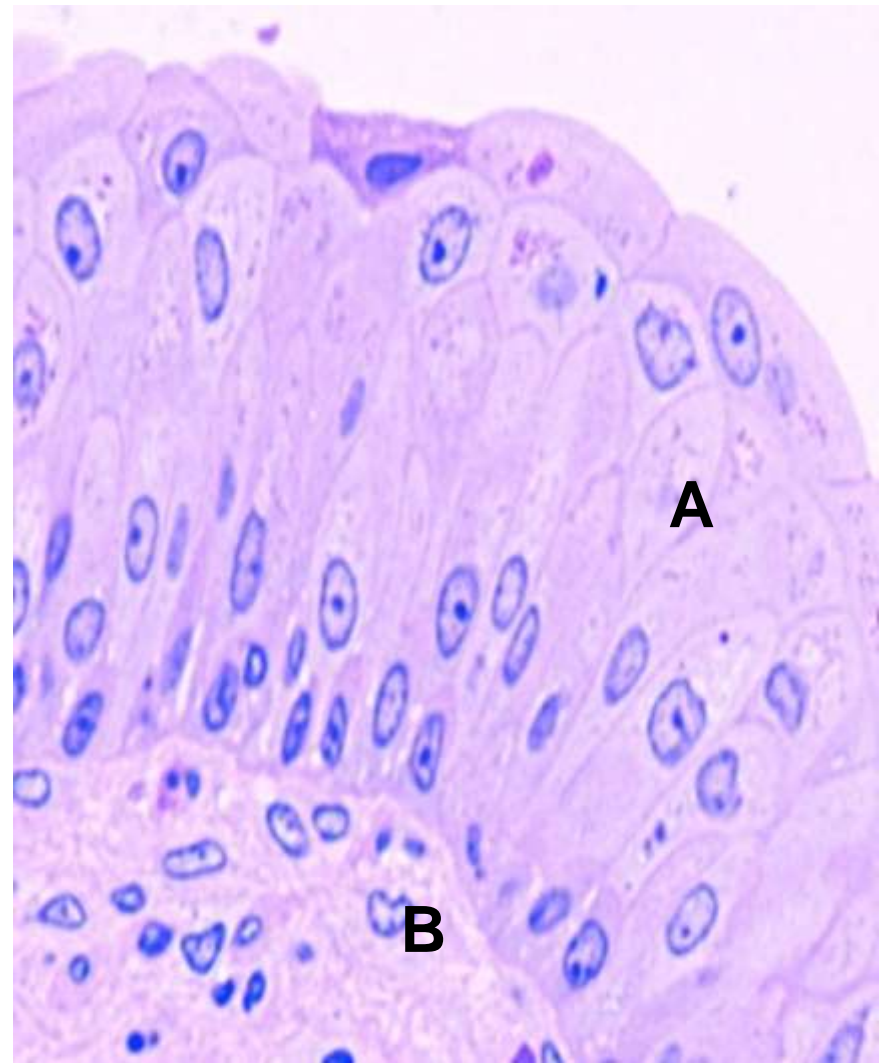
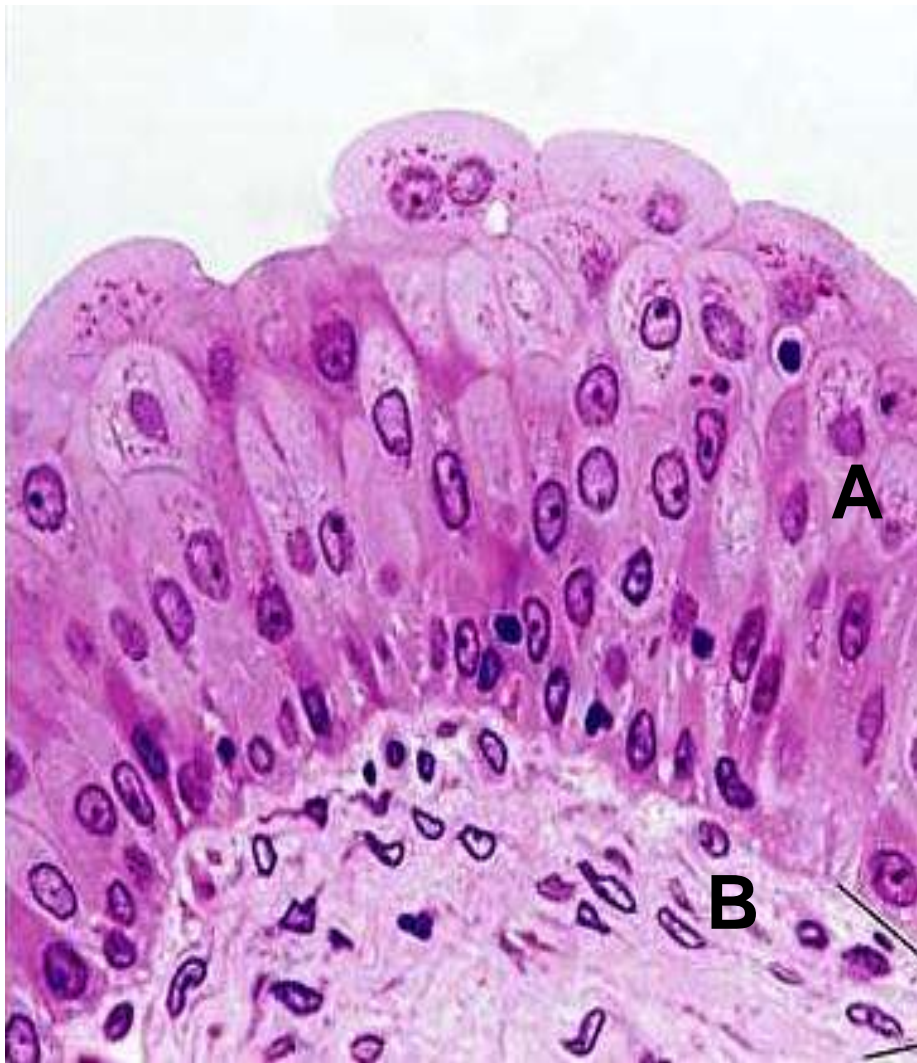
Mucoasă orală. Col.HE



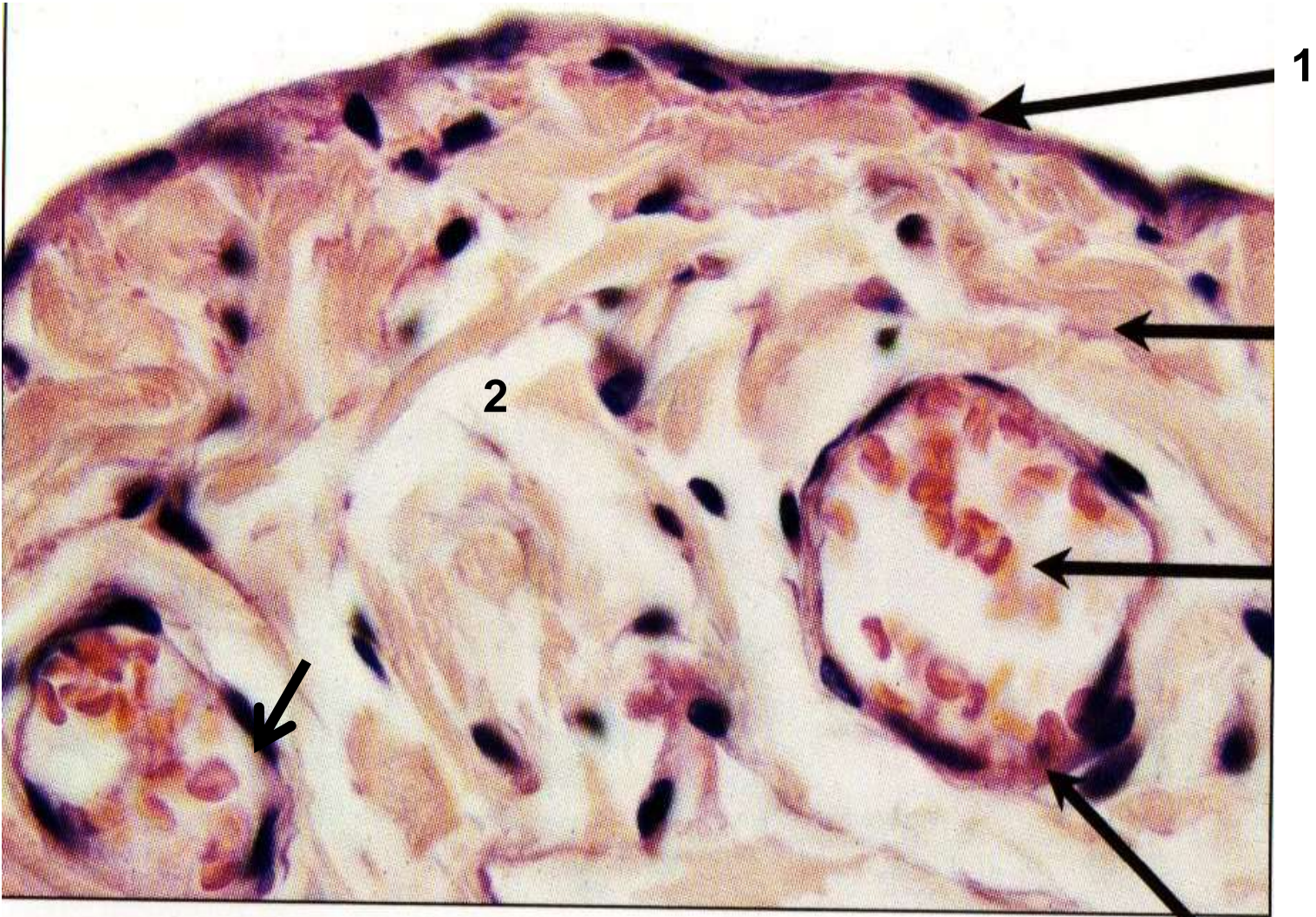
Mucoasă intestinală. Col. HE



Mucoasă traheală
IDENTIFICAȚI COLORAȚIA ȘI ELEMENTELE NOTATE CU LITERE



Mucoasă de vezică urinară. Col. HE



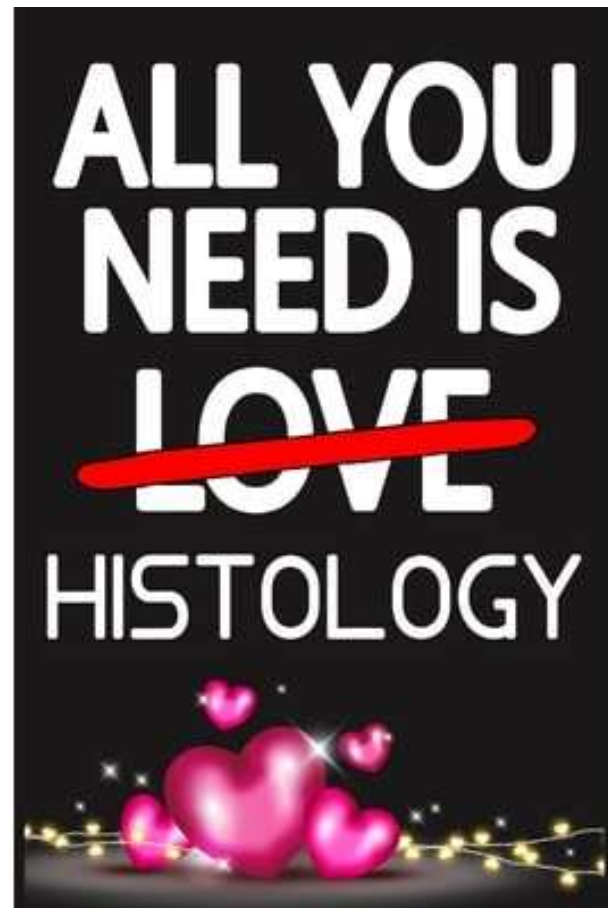
Seroasă. Col. HE

1. Mezoteliu – CE TIP DE EPITELIU ESTE ?

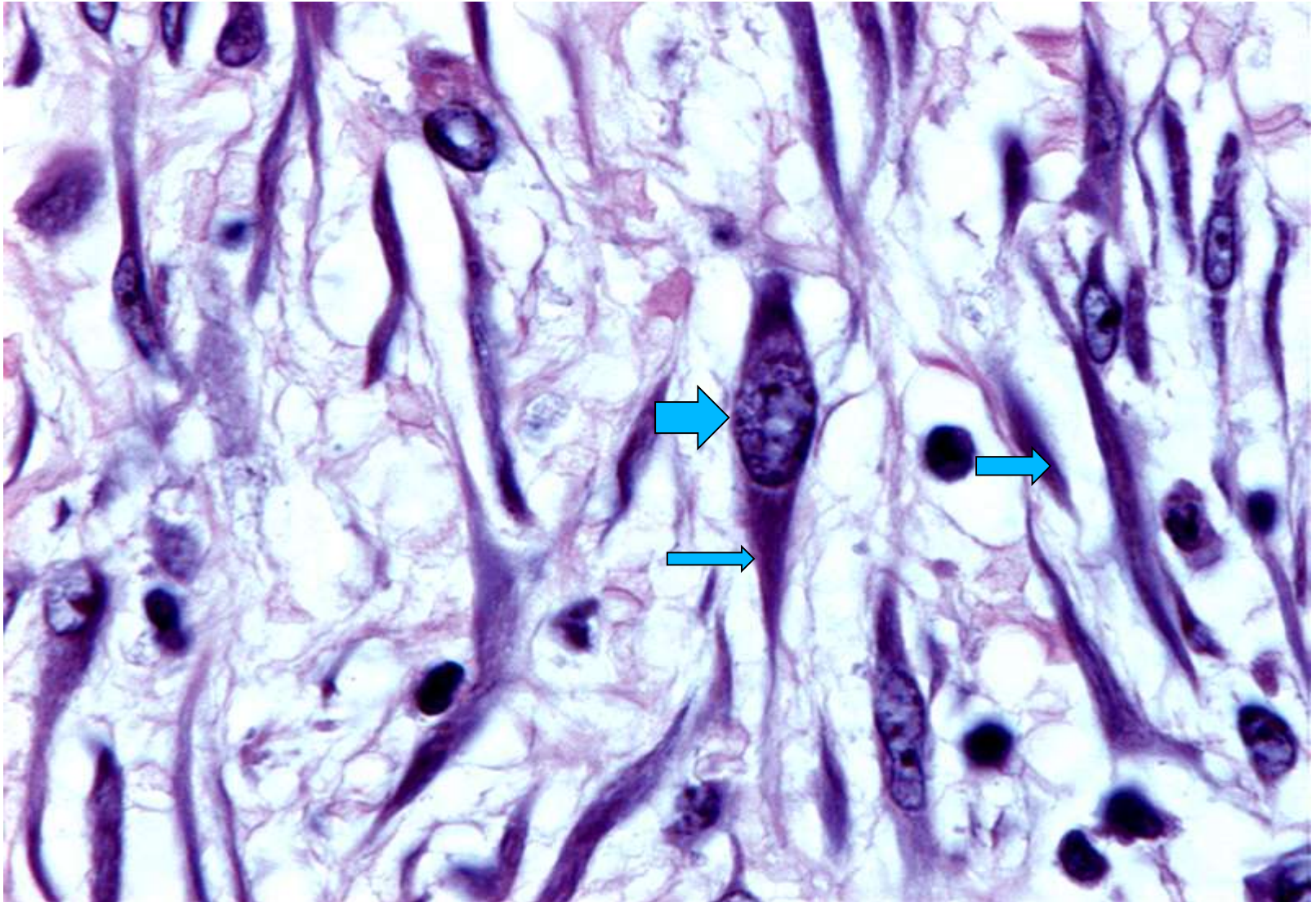
2. Țesut conjunctiv lax

IDENTIFICAȚI ELEMENTELE INDICATE PRIN SĂGEȚI

Let's play a game!



Identificati coloratia si elementele indicate



Identificati coloratia si tipul de epiteliu

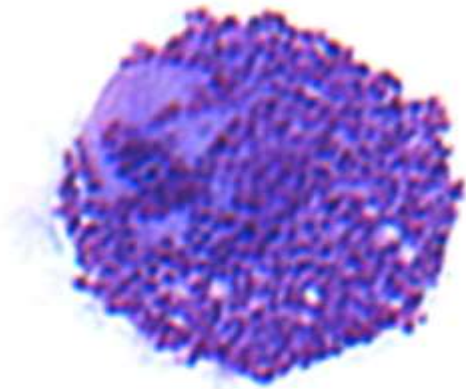


Identificati coloratia si elementele indicate

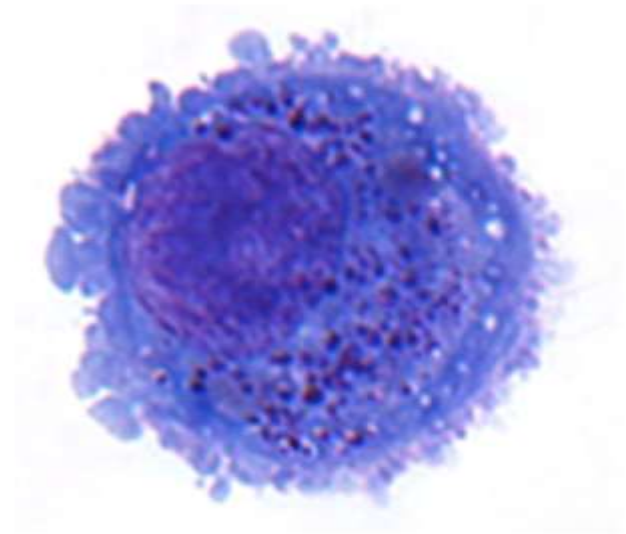


Selectati raspunsurile corecte:
Mastocitele sunt localizate in:
Epiderma
Derm
Mezenter
Mucoasa digestiva si respiratorie
Tesut nervos

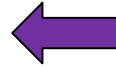
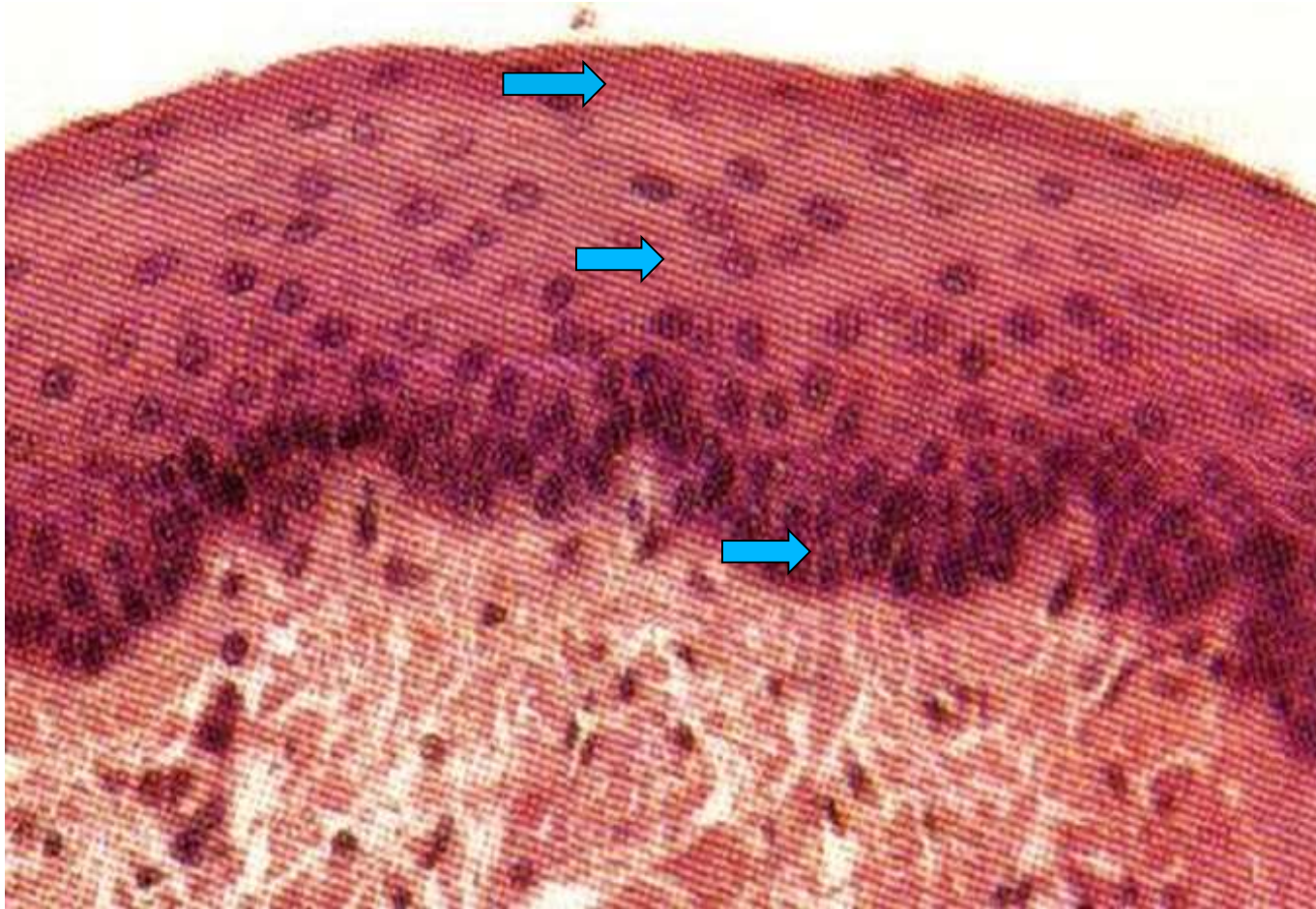
Resting mast cell



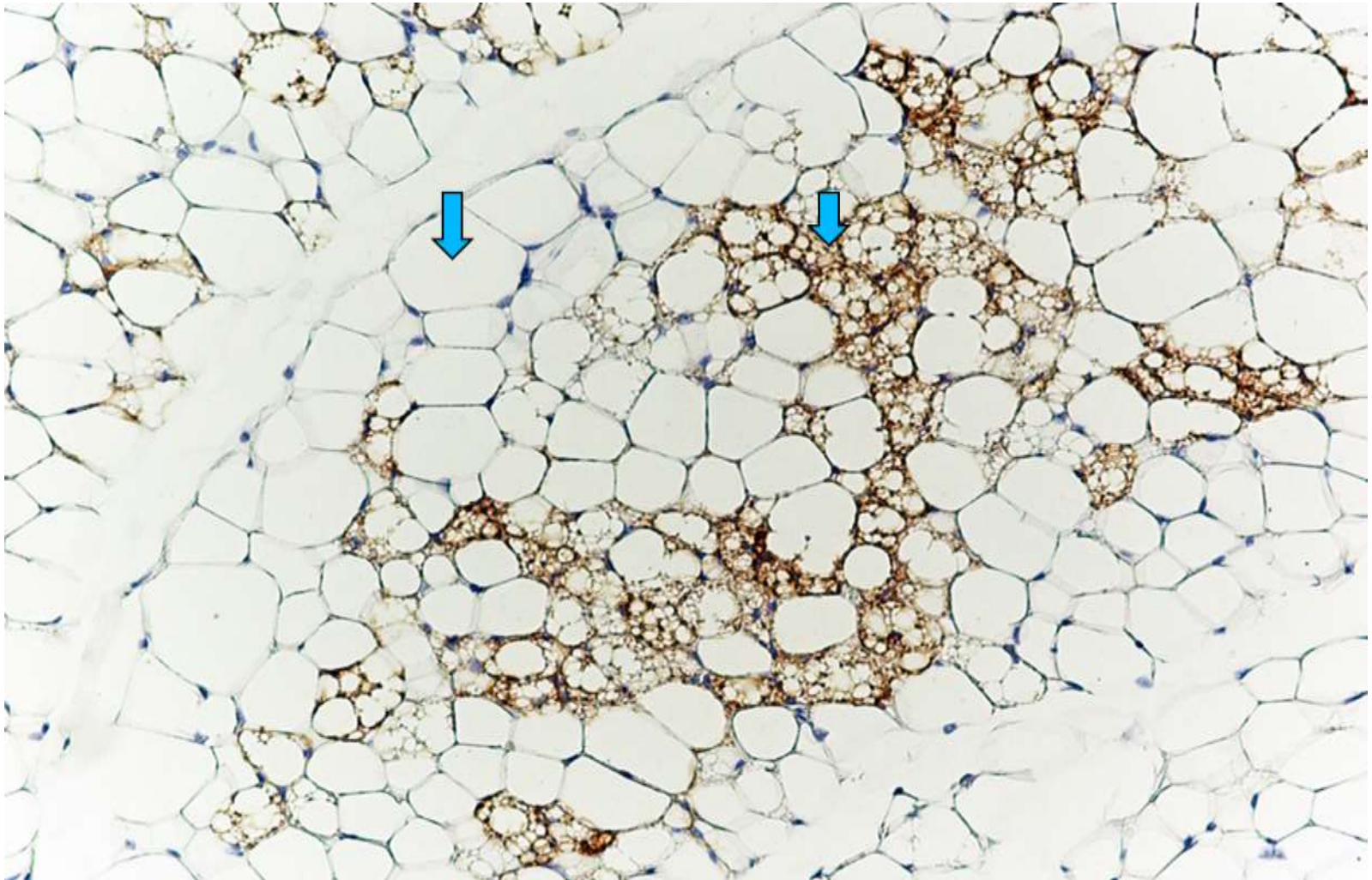
Activated mast cell



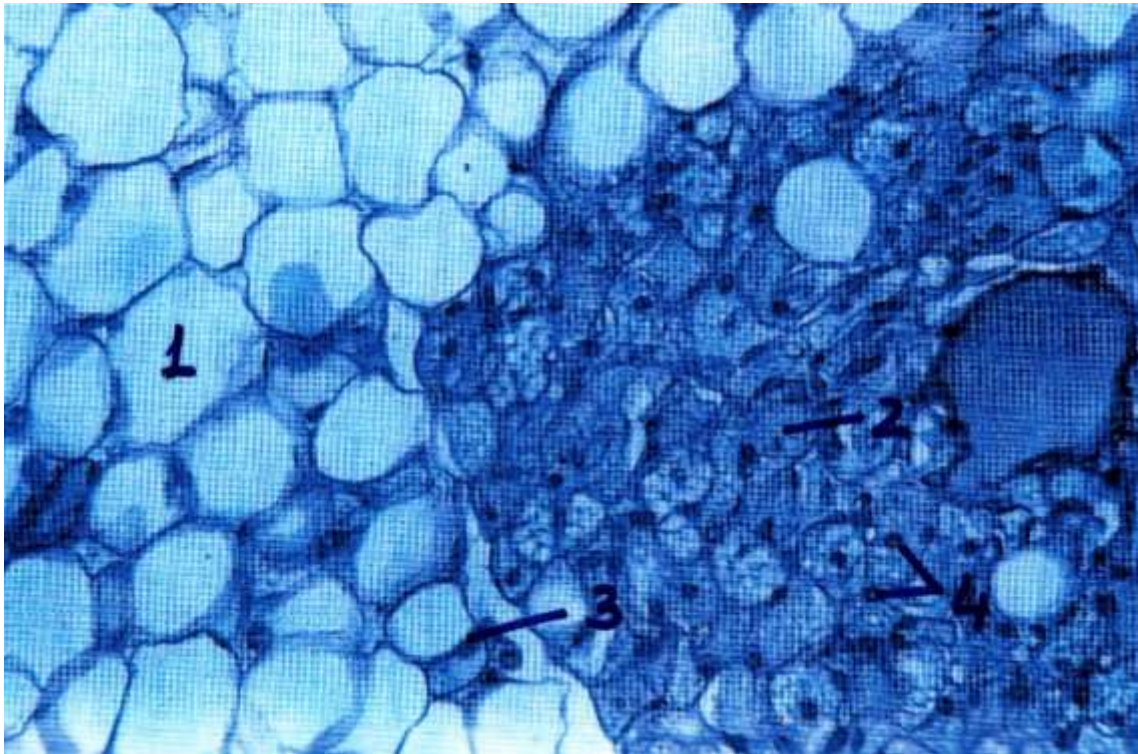
Identificati coloratia si elementele indicate



Identificati coloratia si elementele indicate



Identificati coloratia si elementele

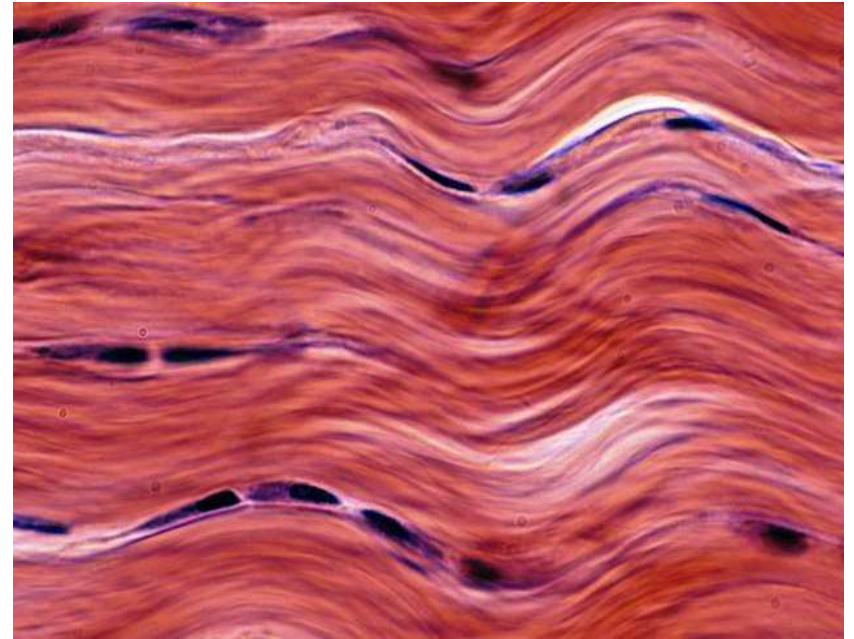
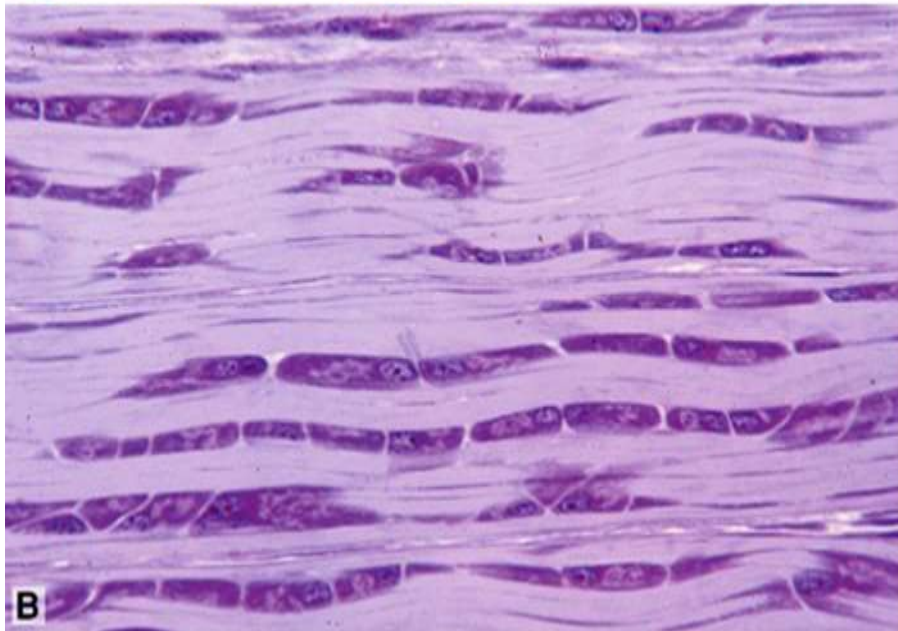
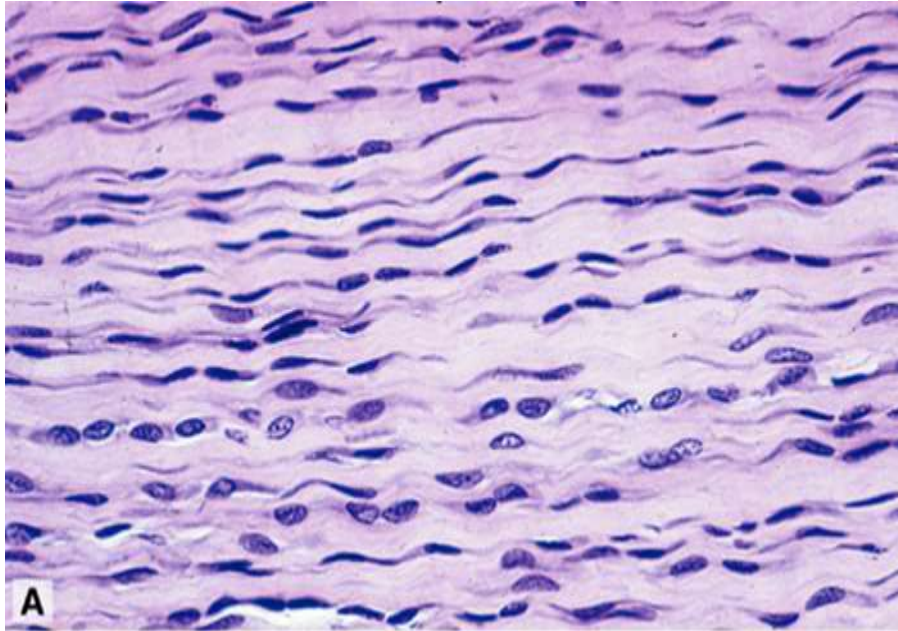


Selectati functia adipocitelor
brune:

- A. Functie nutritiva
- B. Termogeneza
- C. Metabolismul lipidic
- D. Functie mecanica
- E. Acumularea colesterolului

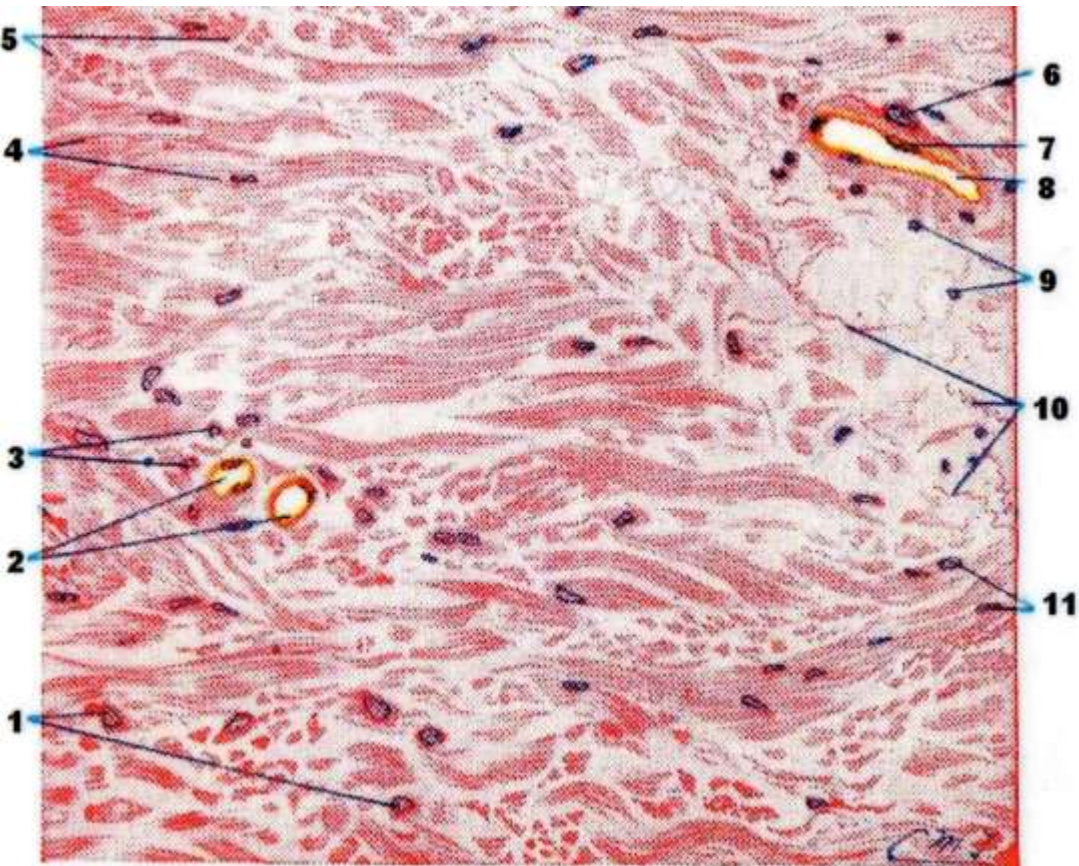
Selectati functiile adipocitelor
albe:

- a. Metabolism lipidic
- b. Functie nutritiva
- c. Functie mecanica
- d. Functie de suport
- e. Acumulare LDL (Low Density Lipoproteines) si colesterol



Tipul de tesut conjunctiv:
(alegeti raspunsurile corecte)

- A. Tesut conjunctiv dens
- B. Tesut conjunctiv lax
- C. Tesut conjunctiv regulat
- D. Tesut conjunctiv neregular

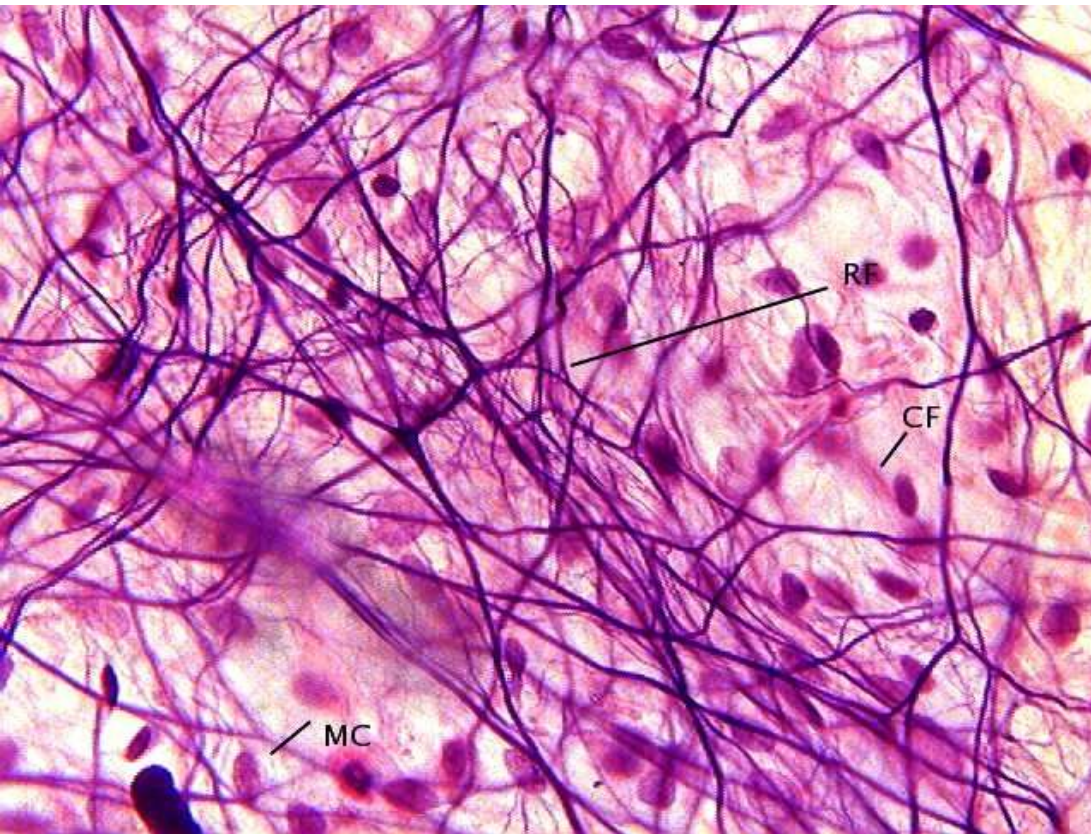


Selecteaza raspunsul corect:

- a. Tesut conjunctiv regulat
- b. Tesut conjunctiv neregular

Identificati coloratia si elementele indicate





Tipul de tesut conjunctiv:

- A. Tesut conjunctiv dens
- B. Tesut conjunctiv lax
- C. Tesut conjunctiv ordonat
- D. Tesut conjunctiv neregulat

Alegeti raspunsurile corecte:

- a. Fibrele de reticulina- culoare mov/albastruie
- b. Fibrele de colagen- culoare mov/albastruie
- c. Fibrele de colagen- culoare roz
- d. Fibrele de reticulina- culoare roz



Sesiune Q&A

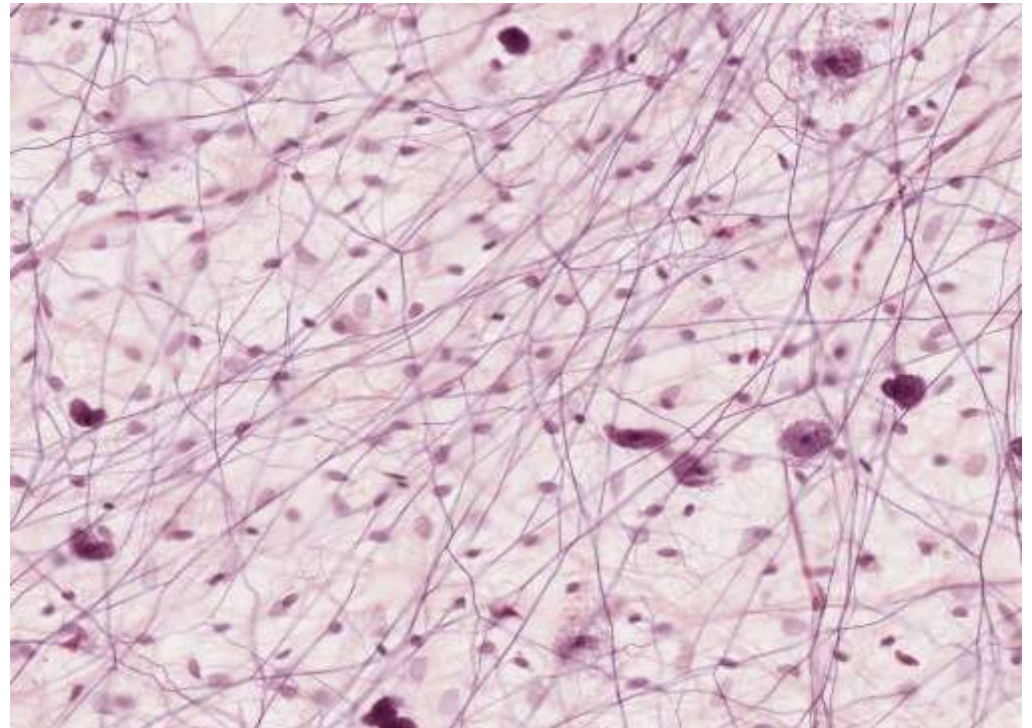
1. Poti sa identifici fibrele de reticulina cu ajutorul coloratiei H&E?
2. Care este originea macrofagelor?
3. Care este functia adipocitelor brune?
4. Care este aspectul caracteristic al adipocitelor uniloculare?
5. Exemple de celule fixe ale tesutului conjunctiv
6. Exemple de celule mobile ale tesutului conjunctiv
7. Care este localizarea celulelor dendritice?
8. Care sunt functiile tesutului conjunctiv?
9. Ce este un tesut conjunctiv dens?



Tema



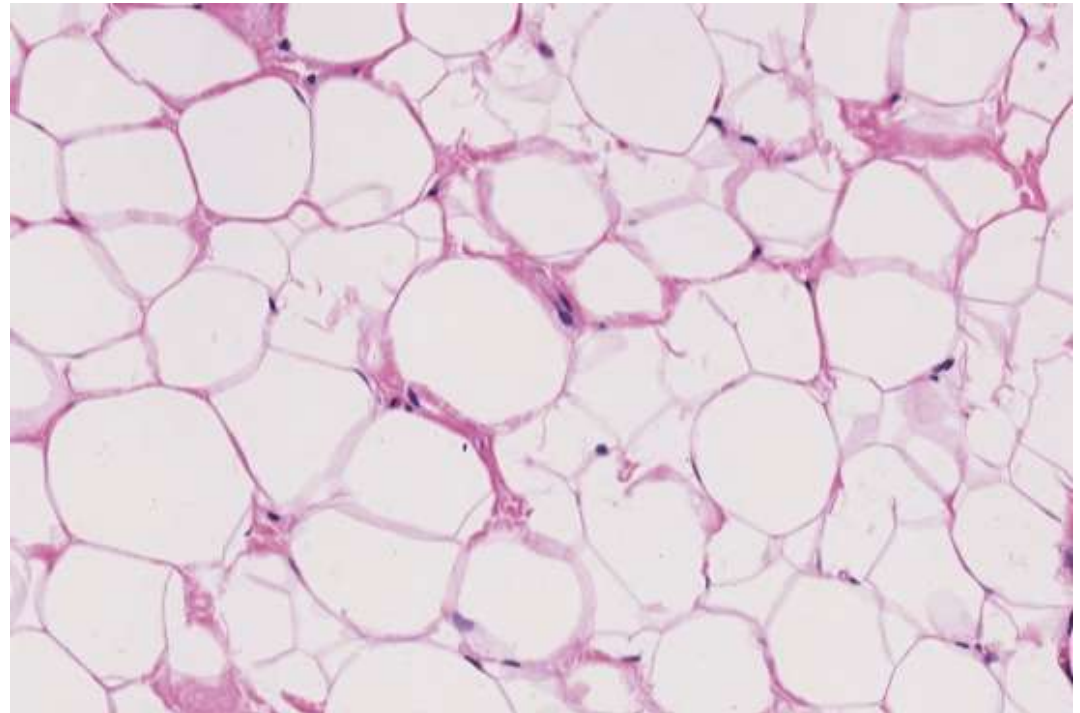
1. Tipul de tesut conjunctiv(complement multiplu):
 - A. Tesut conjunctiv lax
 - B. Tesut conjunctiv dens
 - C. Tesut conjunctiv ordonat
 - D. Tesut conjunctiv neordonat



Tema



2. Tipul de tesut conjunctiv(CM):
- A. Tesut mesenchimal
 - B. Tesut adipos
 - C. Tesut conjunctiv lax
 - D. Tesut conjunctiv dens

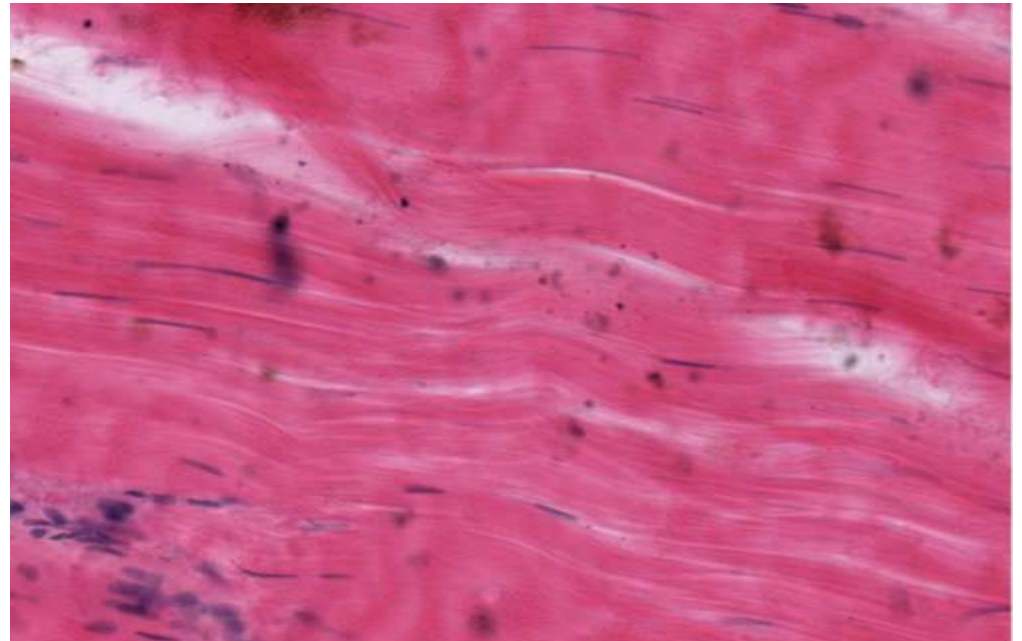


Tema



2. Tipul de tesut
conjunctiv(CM):

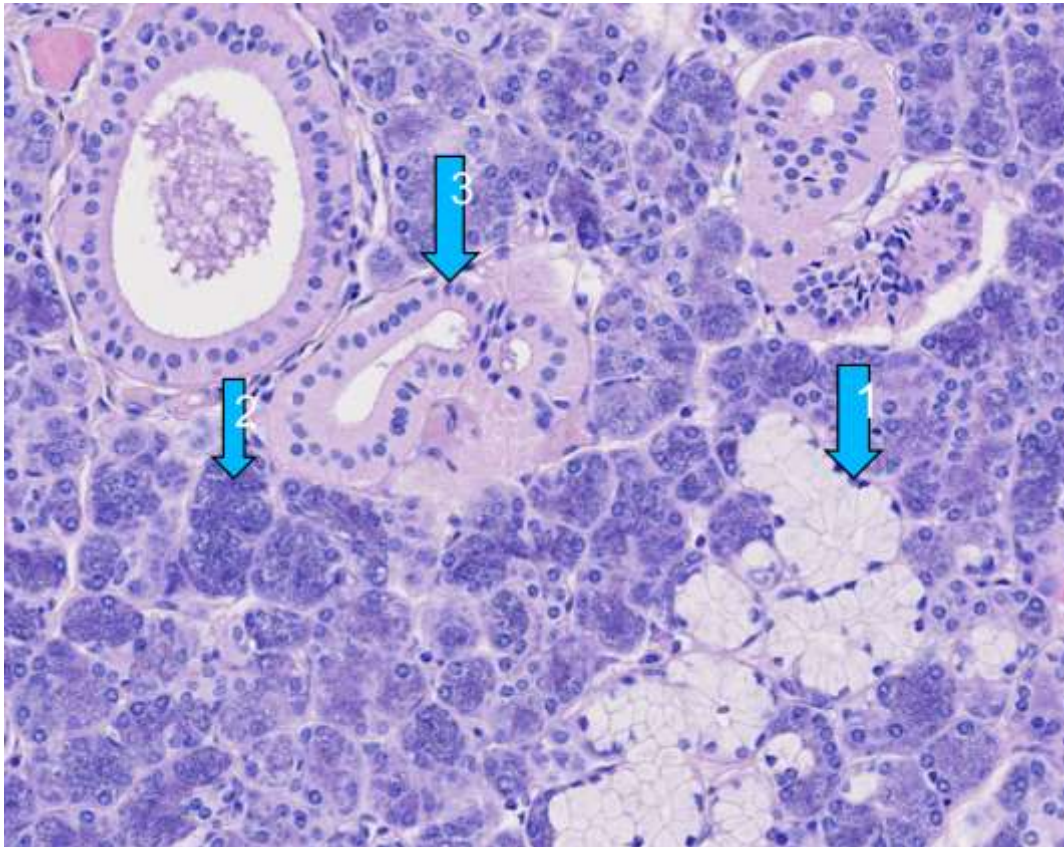
- A. Tesut conjunctiv lax
- B. Tesut conjunctiv dens
- C. Tesut conjunctiv ordonat
- D. Tesut conjunctiv neordonat



Tema



Identificati coloratia si elemente

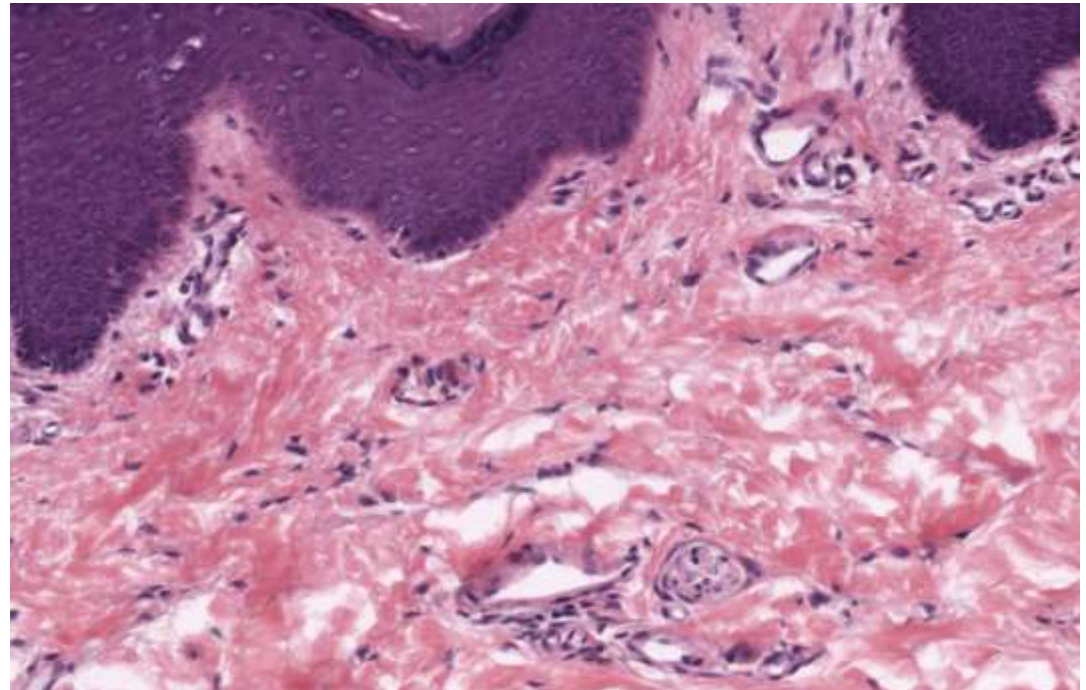


Tema



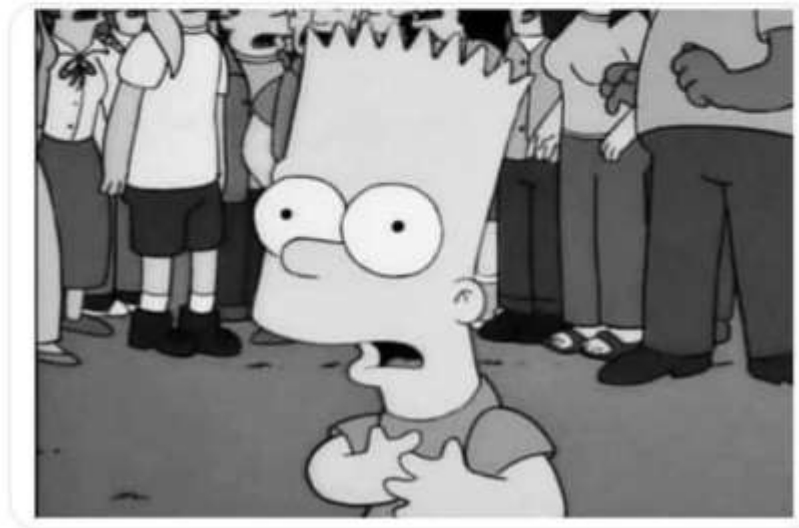
2. Tipul de tesut
conjunctiv(CM):

- A. Tesut conjunctiv lax
- B. Tesut conjunctiv dens
- C. Tesut conjunctiv ordonat
- D. Tesut conjunctiv neordonat



- ◆ Tells students they have a test
- ◆ Posts about test online
- ◆ Send notification home
- ◆ Gives out a study guide
- ◆ Does a review session

*Students on the day of the test:



Bibliografie:

<https://histologylab.cvl.columbia.edu/>

<https://histologyguide.com/>

<http://86.122.148.72/DSServer/Slides.aspx>