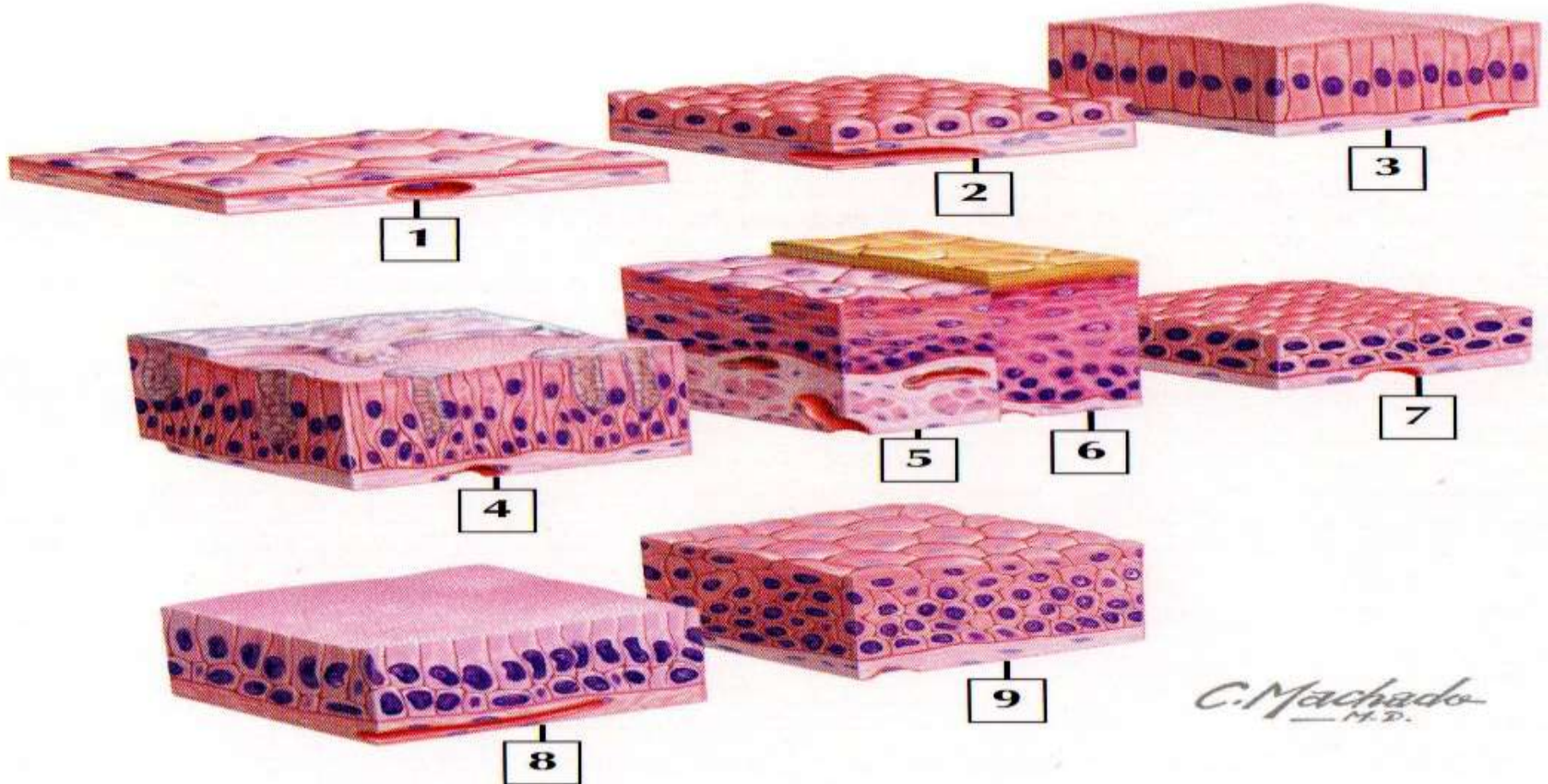


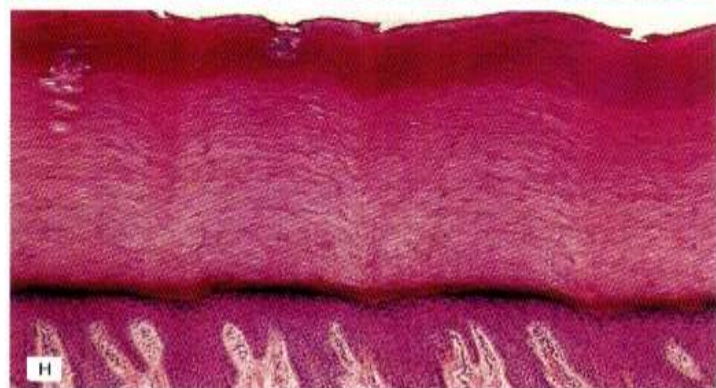
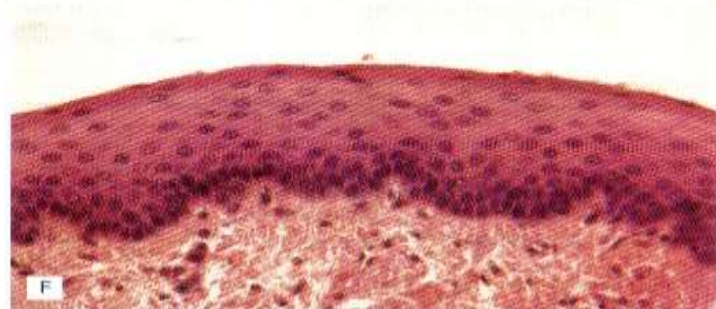
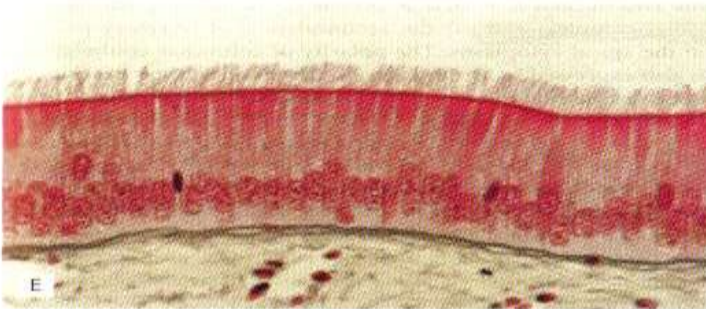
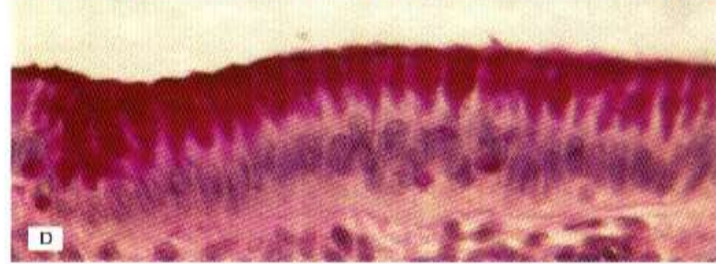
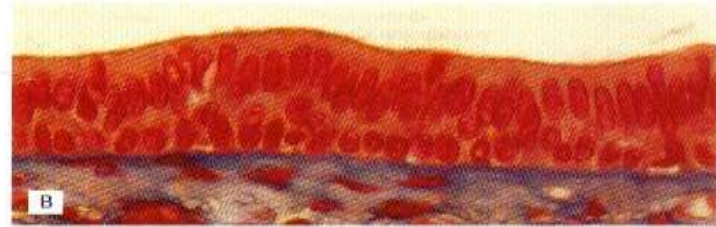
ȚESUTURILE EPITELIALE

EPITELII DE ACOPERIRE / CĂPTUȘIRE



1. Epiteliu simplu pavimentos
2. Epiteliu simplu cubic
3. Epiteliu simplu cilindric
4. Epiteliu pseudostratificat cilindric ciliat cu celule caliciforme
5. Epiteliu stratificat pavimentos fără keratinizare
6. Epiteliu stratificat pavimentos cu keratinizare
7. Epiteliu bistratificat cubic
8. Epiteliu stratificat cilindric
9. Epiteliu de tranzitie (paramalmighian / uroteliu)

EPITELII DE ACOPERIRE/CĂPTUȘIRE

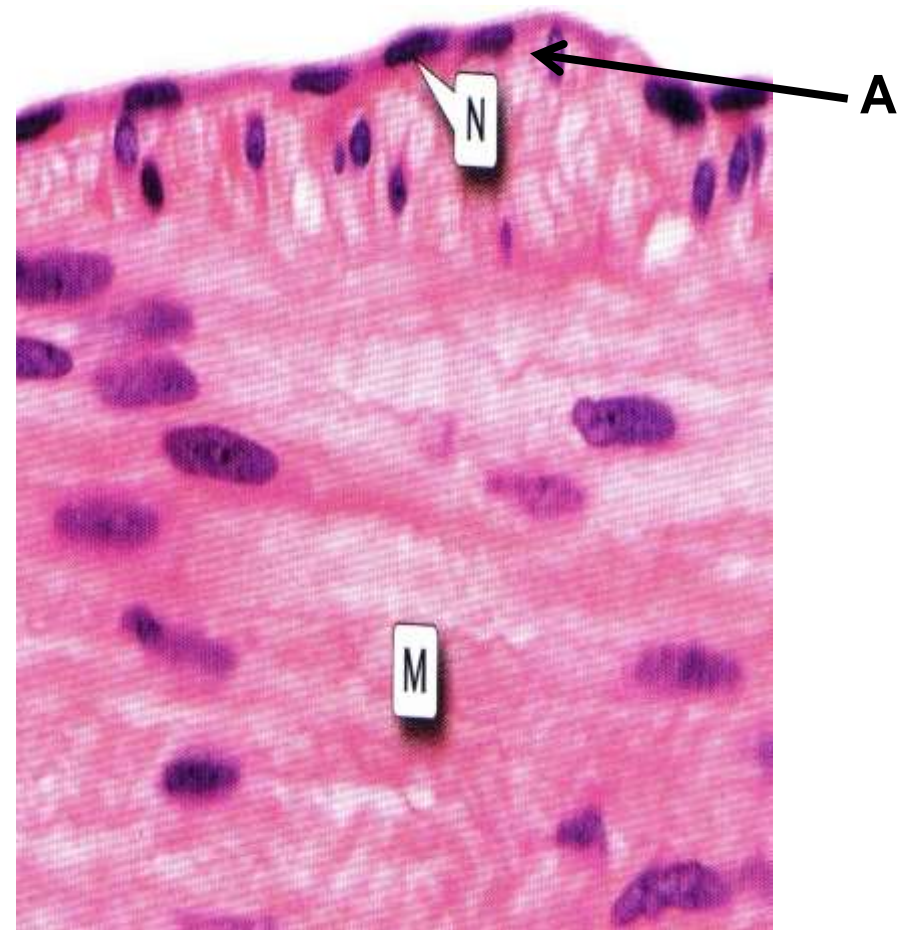
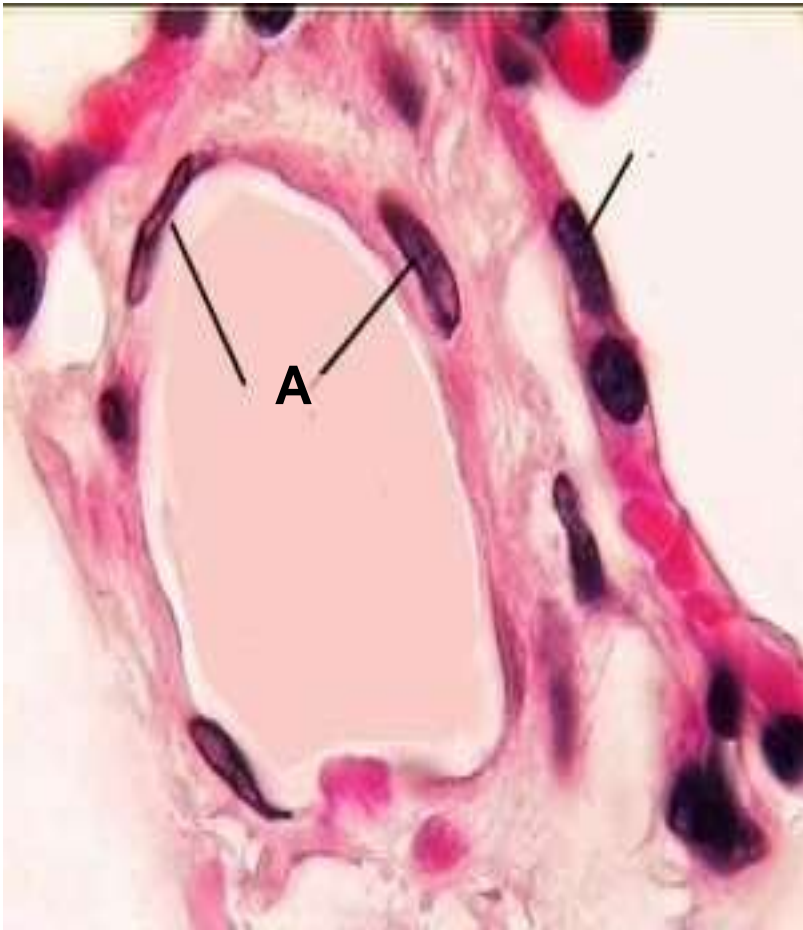


IDENTIFICAȚI TIPURILE DE EPITELIU

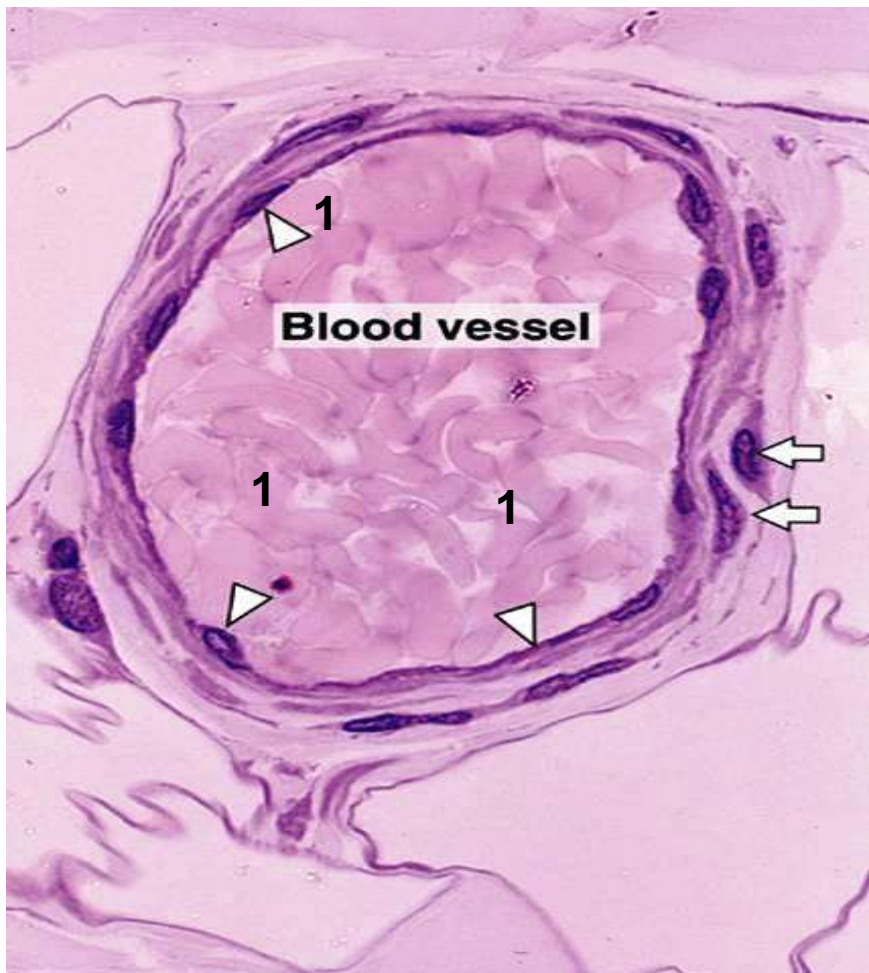


Epiteliu simplu pavimentos. Endoteliu vascular. Colorație Hematoxină-Eozină (Col. HE)

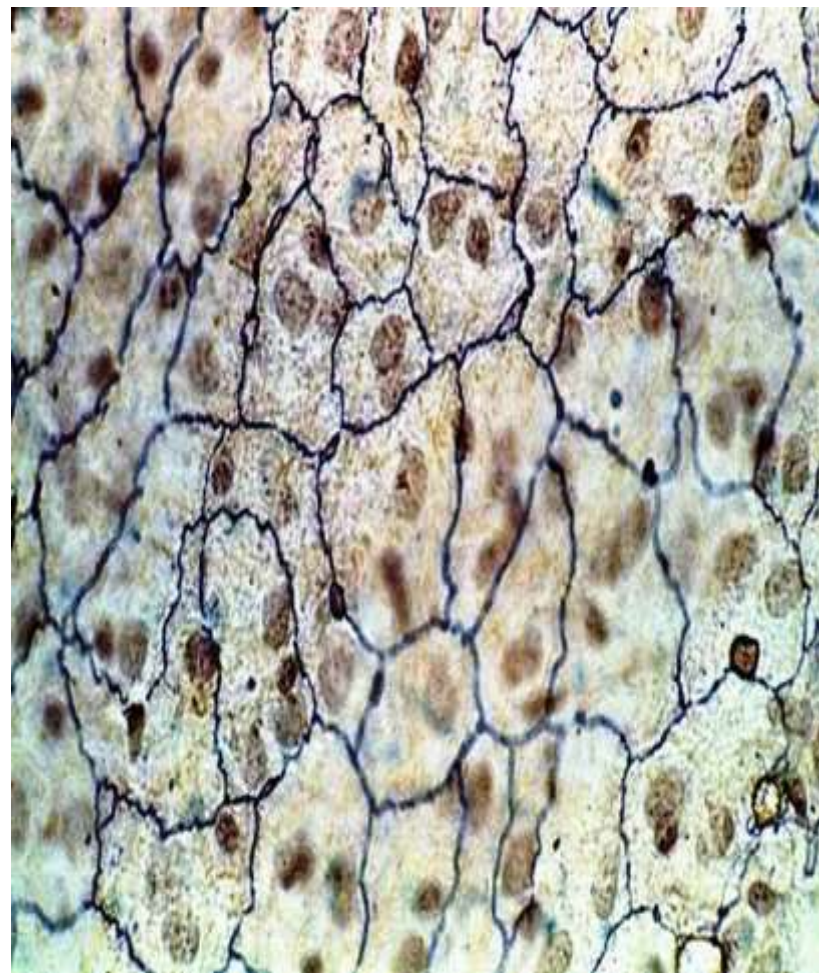
1. celulă endotelială (celulă pavimentoasă)
2. lumenul venulei
3. hematii
4. mastocit
5. țesut conjunctiv



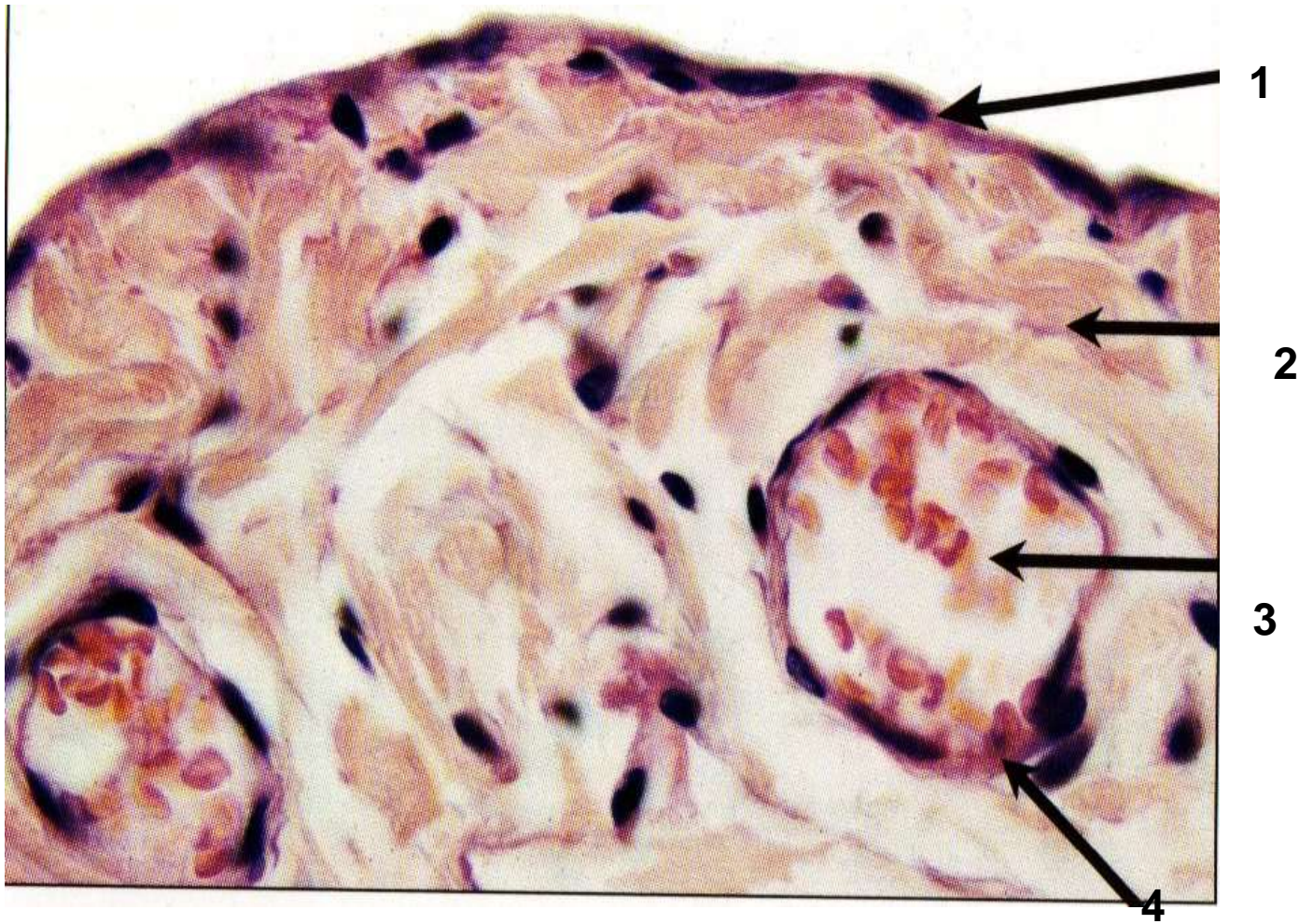
A. Epiteliu simplu pavimentos. Endoteliu vascular. Col.HE



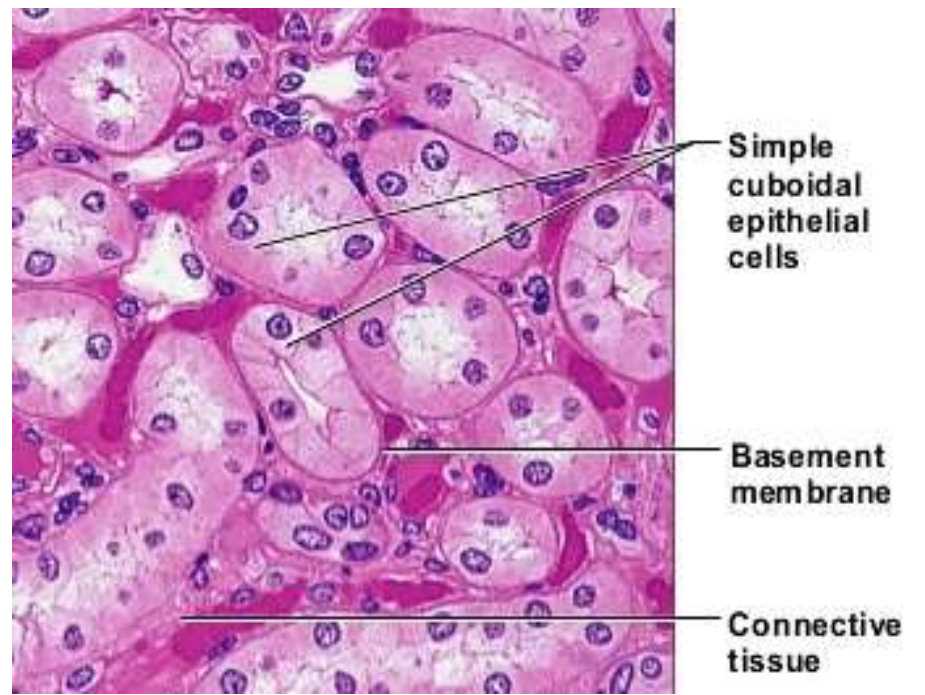
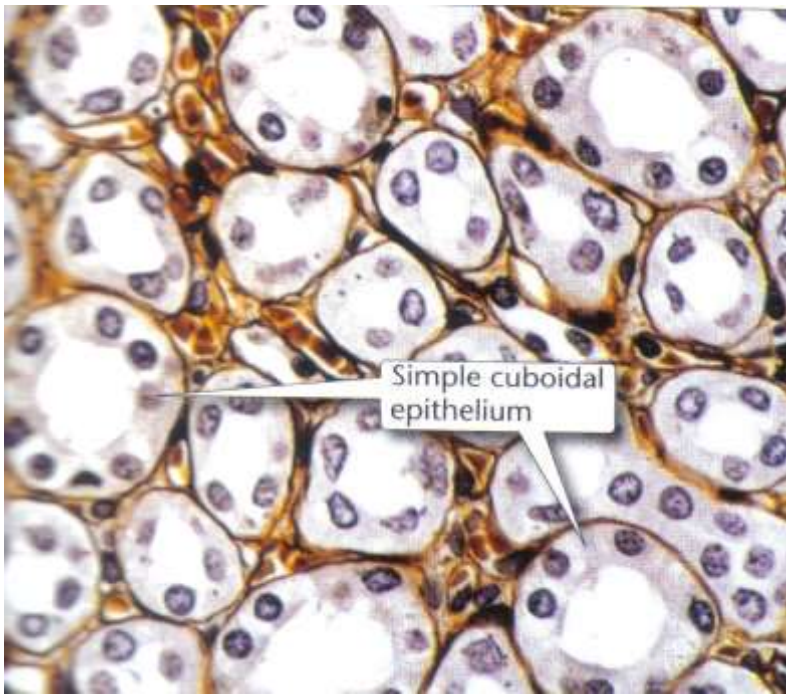
Colorație Hematoxină-Eozină
1. Epiteliu simplu pavimentos. Endoteliu vascular



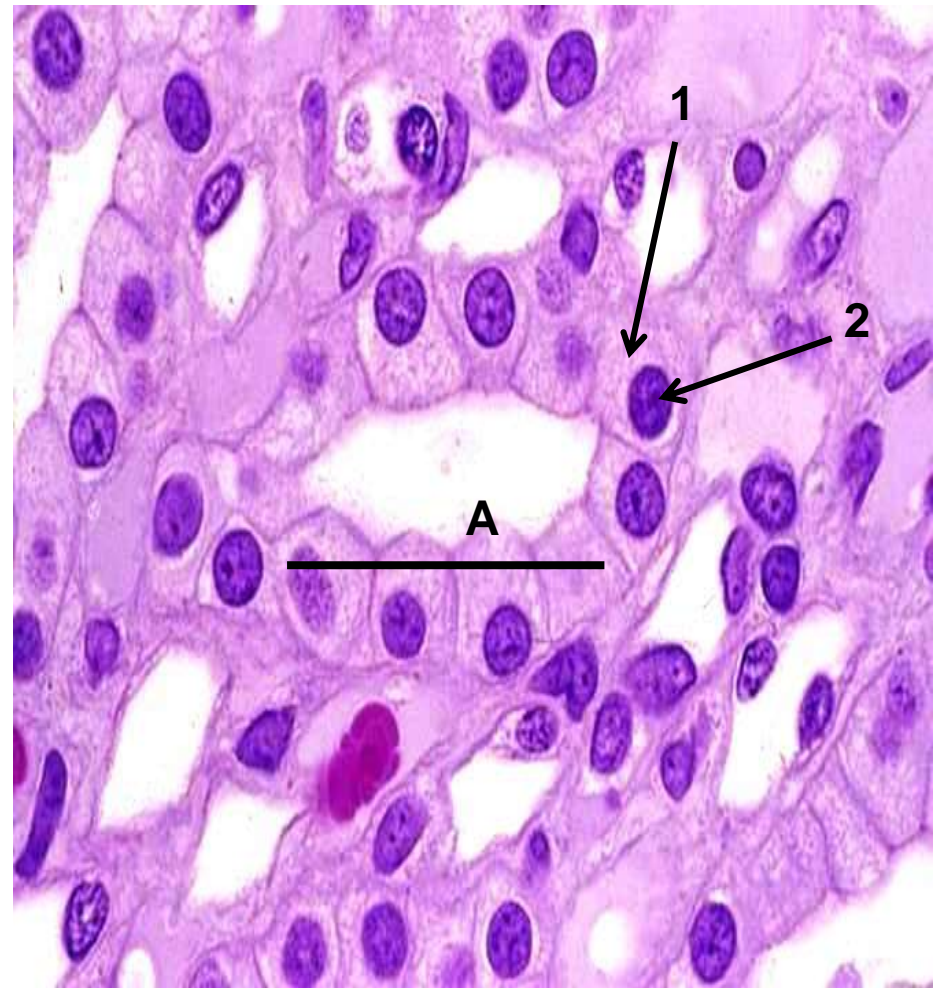
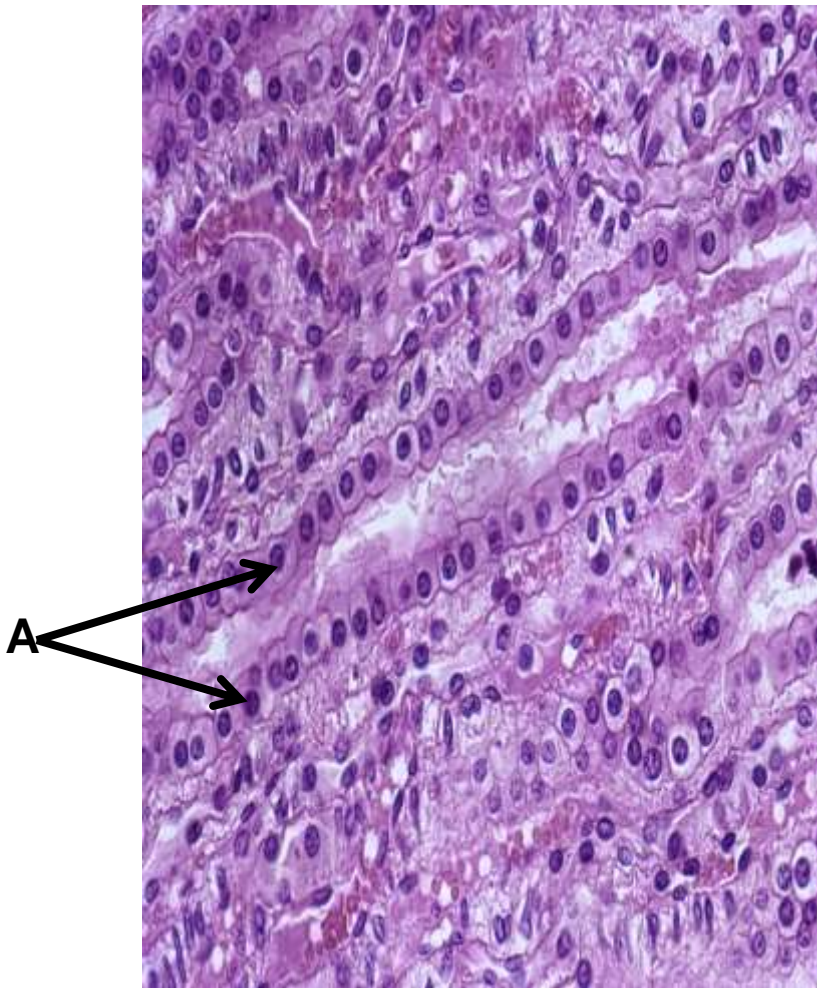
Endoteliu vascular (epiteliu simplu pavimentos). Impregnație argentică



Seroasă. Epiteliu simplu pavimentos (mezoteliu). Col.HE



Epiteliu simplu cubic. Coloratie tricromic Goldner Szekeley



RINICHI. TUBI COLECTORI. Secțiune longitudinală și transversală

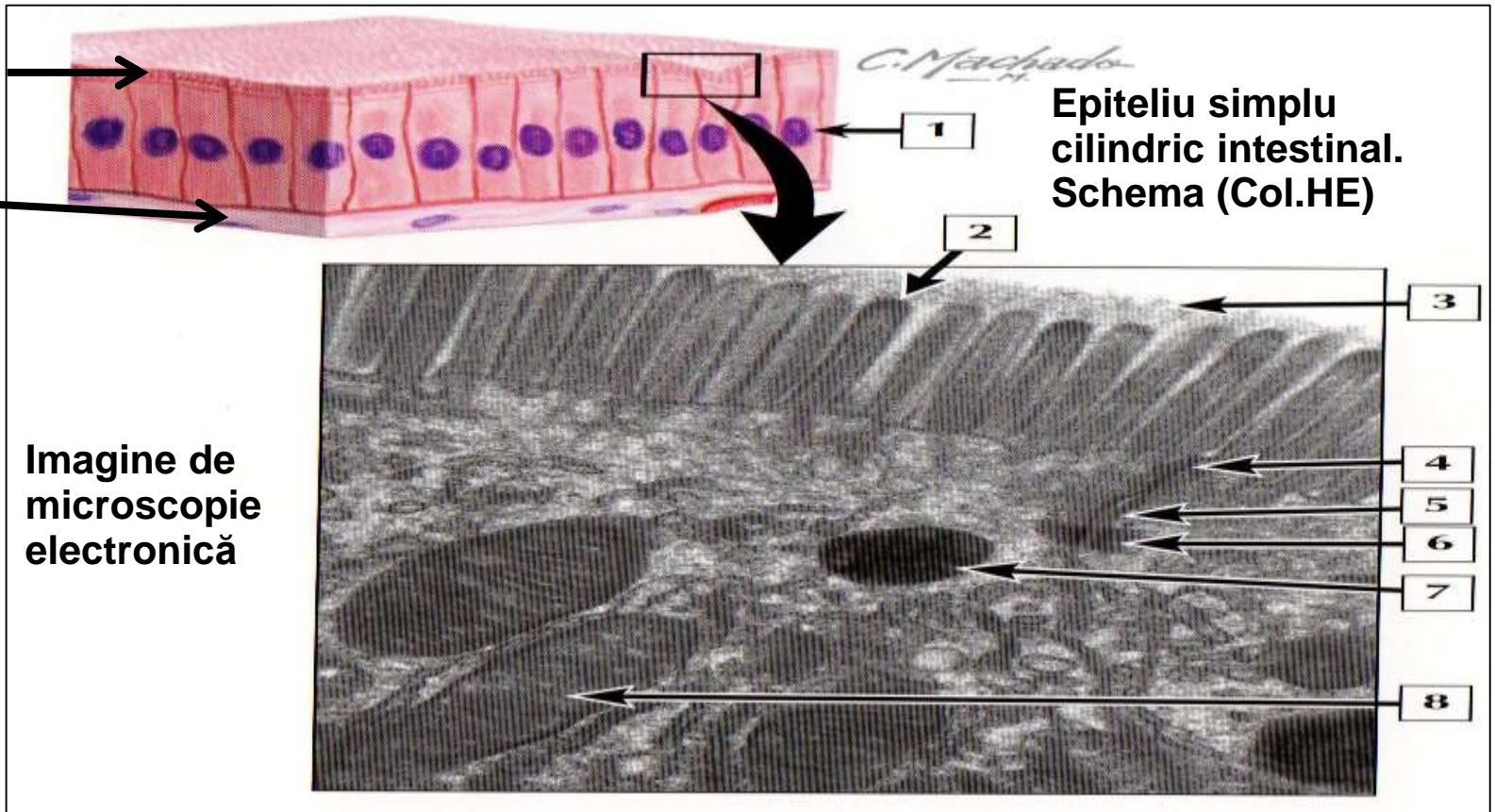
IDENTIFICATI TIPUL DE EPITELIU INDICAT DE LITERA A

IDENTIFICATI COLORATIA

IDENTIFICATI ELEMENTELE 1 si 2

microvili

Tesut conjunctiv



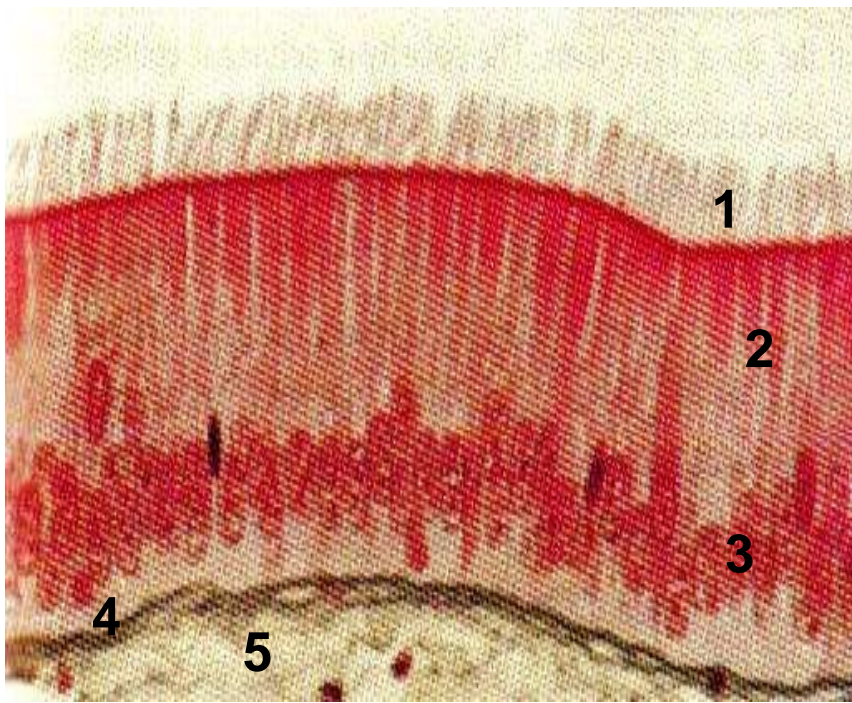
Epiteliu simplu
cilindric intestinal.
Schema (Col.HE)

Imagine de
microscopie
electronică

1. nucleul celulei cilindrice
2. microvili
3. glicocalix
4. zonula occludens
5. zonula adherens
6. desmozomi
7. lizozomi
8. mitocondrie

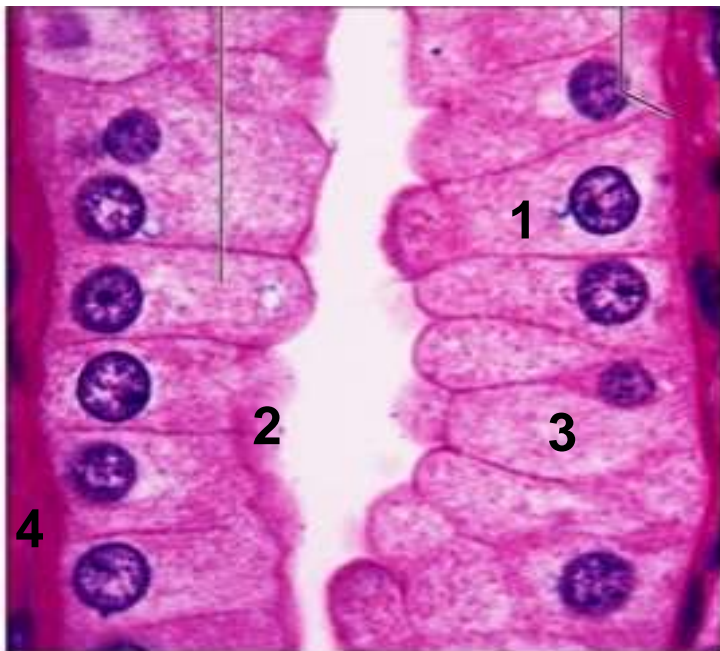


Identificati elementele si colorația



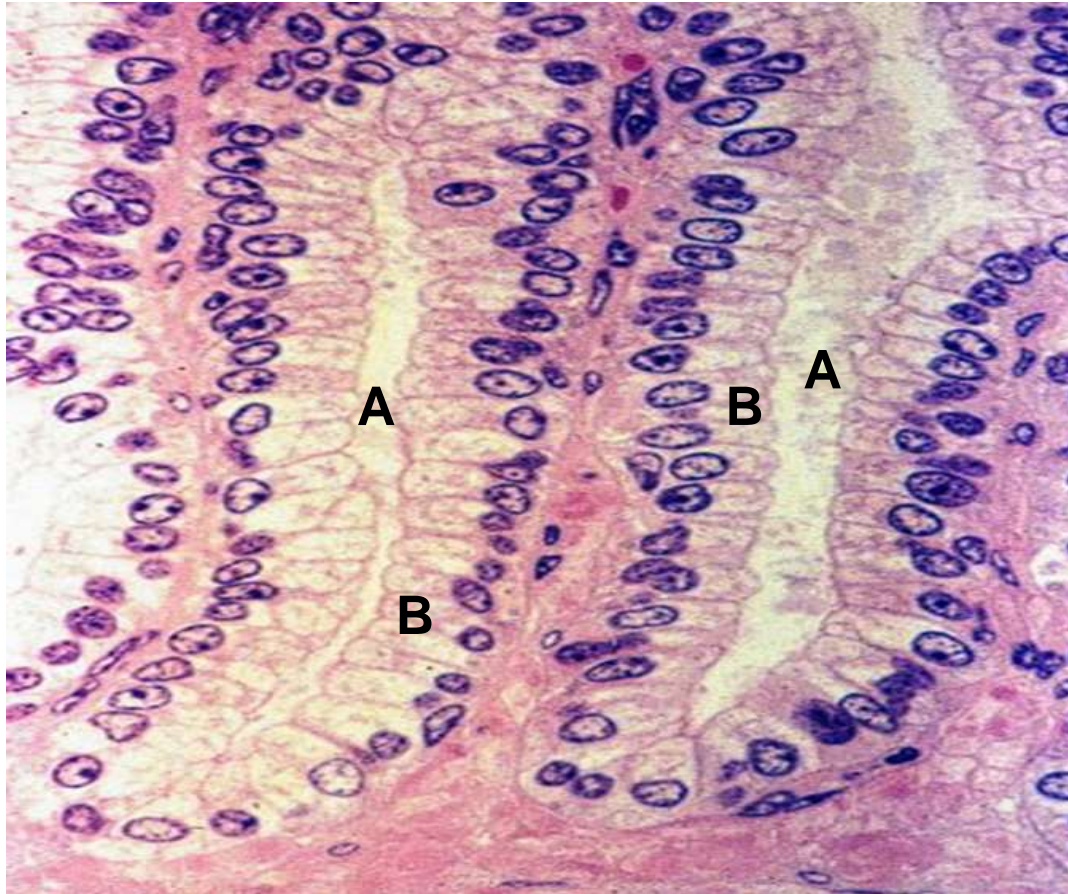
Epitelu simplu cilindric.
 Colorație tricromic Goldner Szekelli

1. cili
2. celule cilindrice
3. nucleii celulelor cilindrice
4. membrana bazala
5. tesut conjunctiv

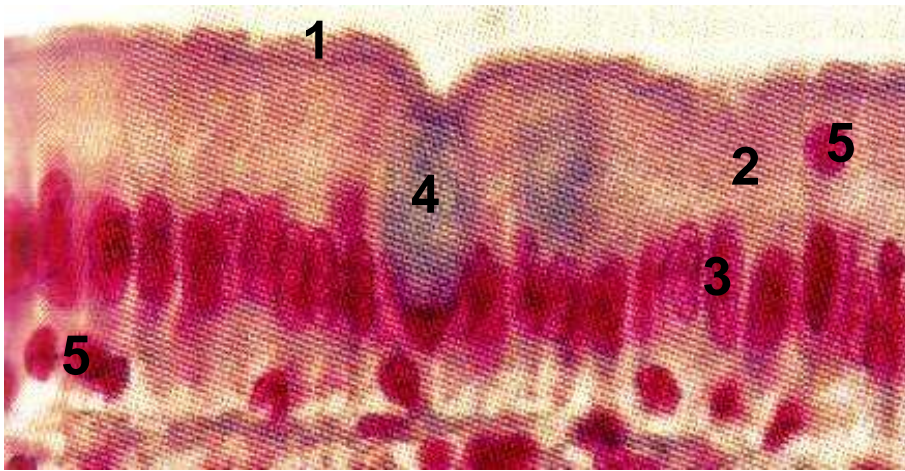


Epitelu simplu cilindric. Glandă
 intestinală Lieberkuhn. Col. HE

1. celulă cilindrică
2. microvili (platou striat)
3. celulă caliciformă
4. țesut conjunctiv

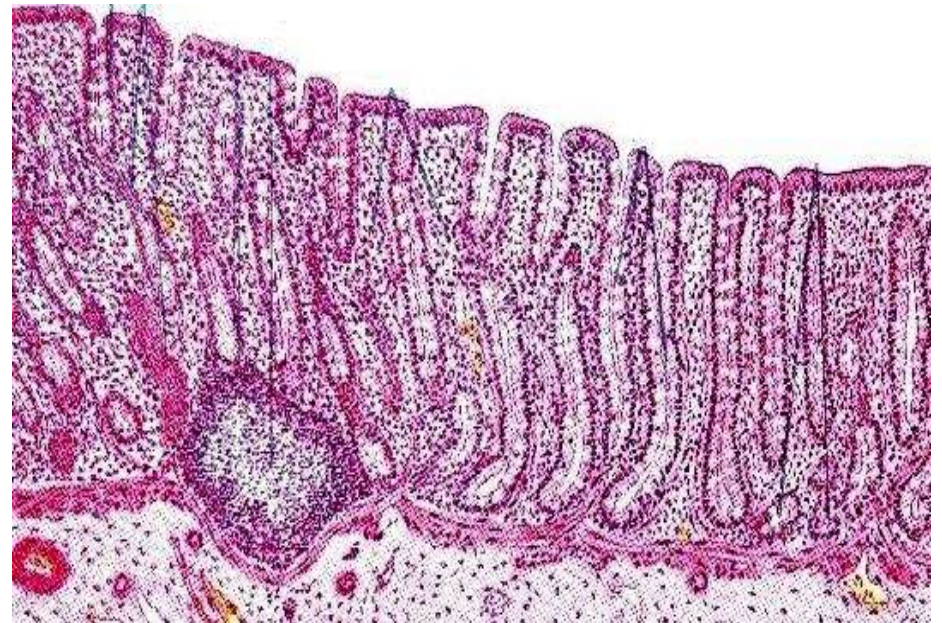
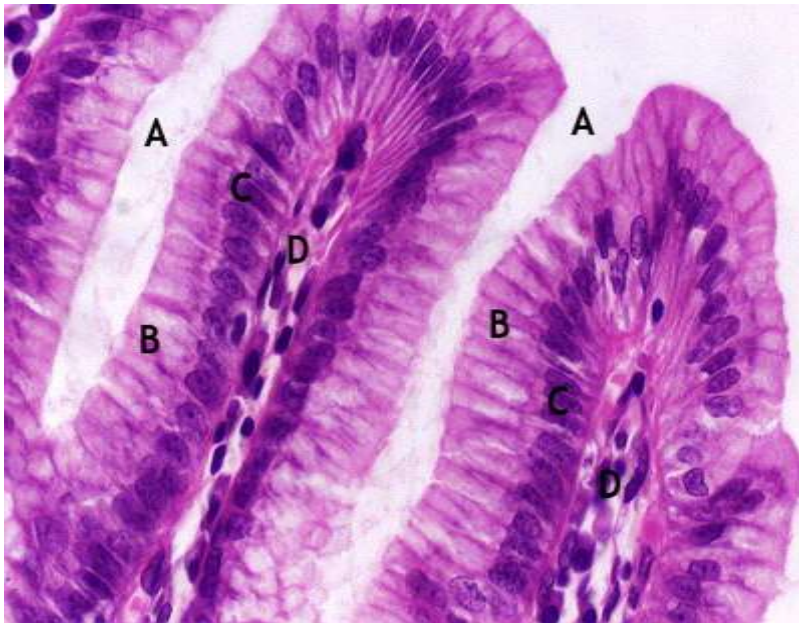


- A. Glande endometriale în faza estrogenică. Col. HE
B. Identificați tipul de epiteliu care căptușește lumenul glandelor



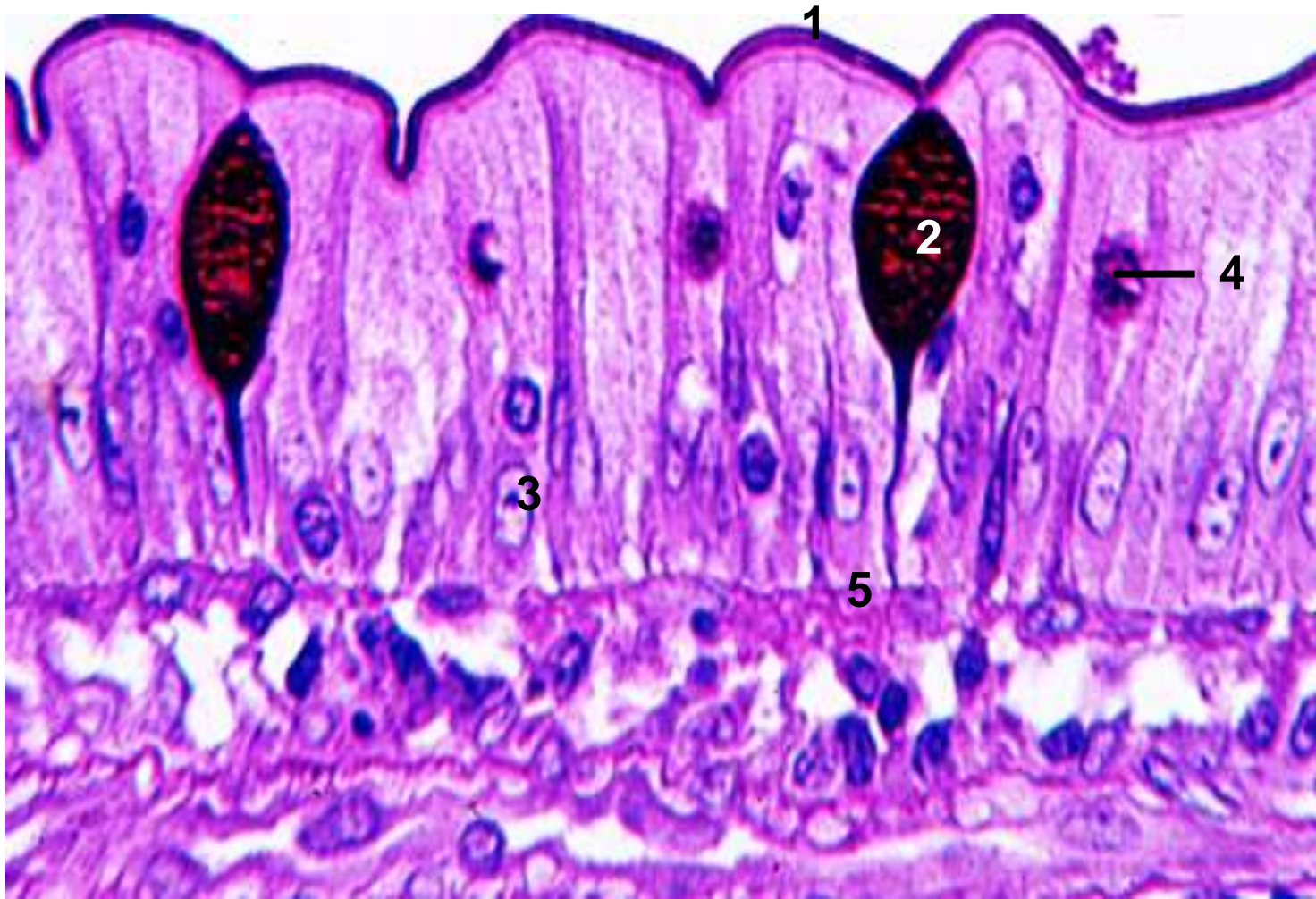
Epiteliu simplu cilindric. Epiteliu intestinal. Col. Tricromic

- 1. microvili
- 2. celulă cilindrică
- 3. nucleul celulei cilindrice
- 4. celulă caliciformă
- 5. limfocite

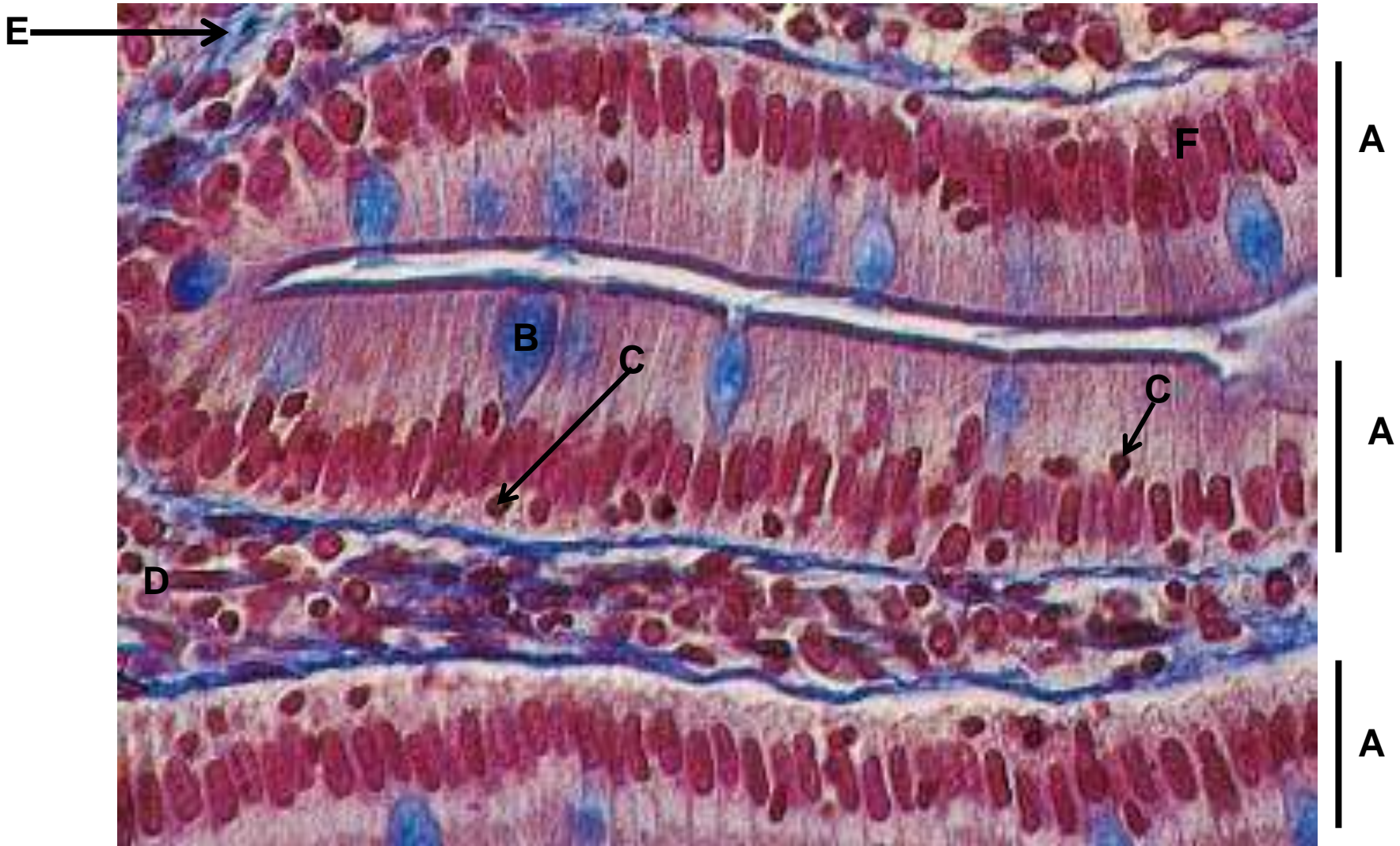


Intestin subțire. Vilozități intestinale
Identificați colorația și elementele

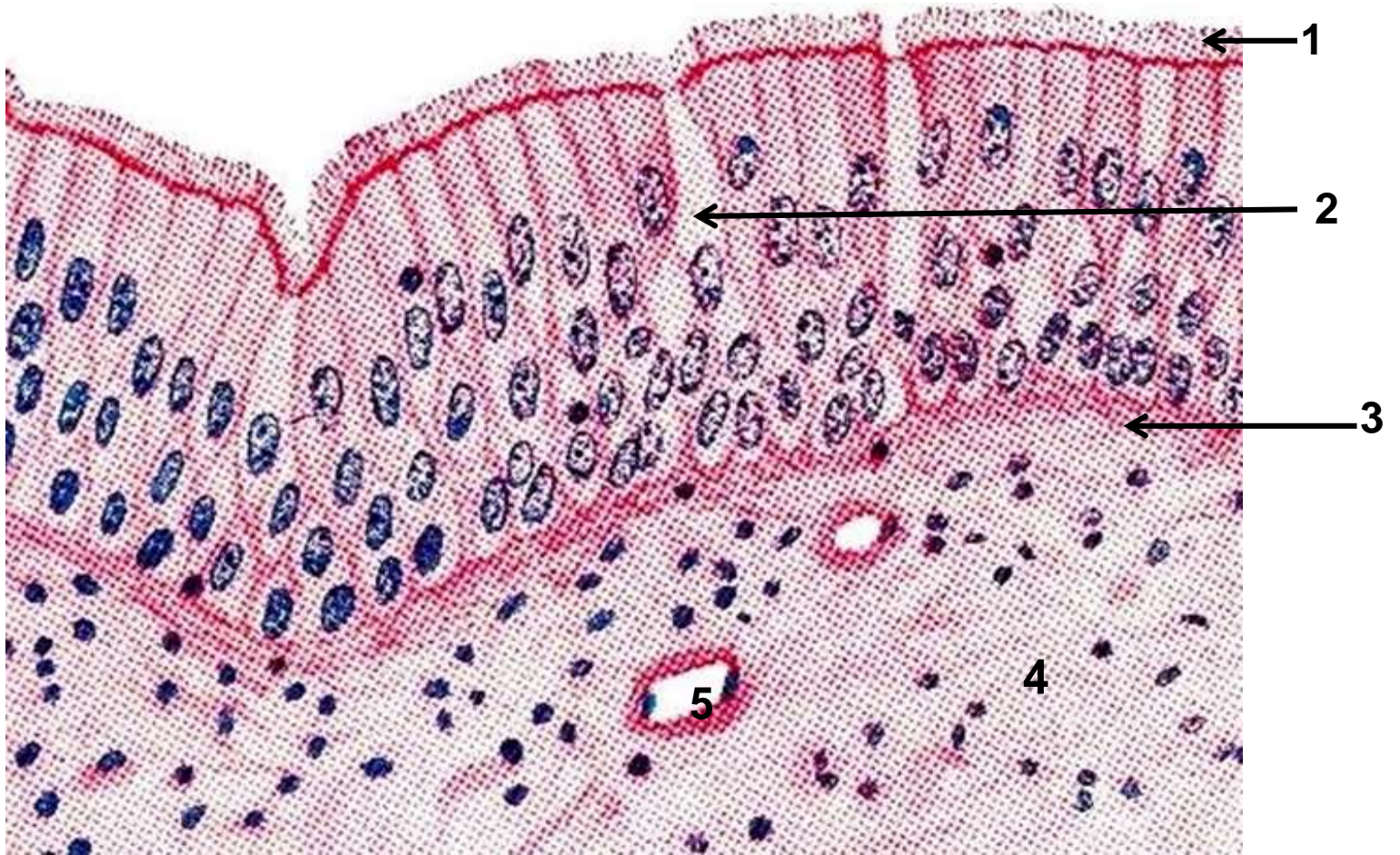
Colon. Col. HE



IDENTIFICAȚI ELEMENTELE ȘI COLORAȚIA

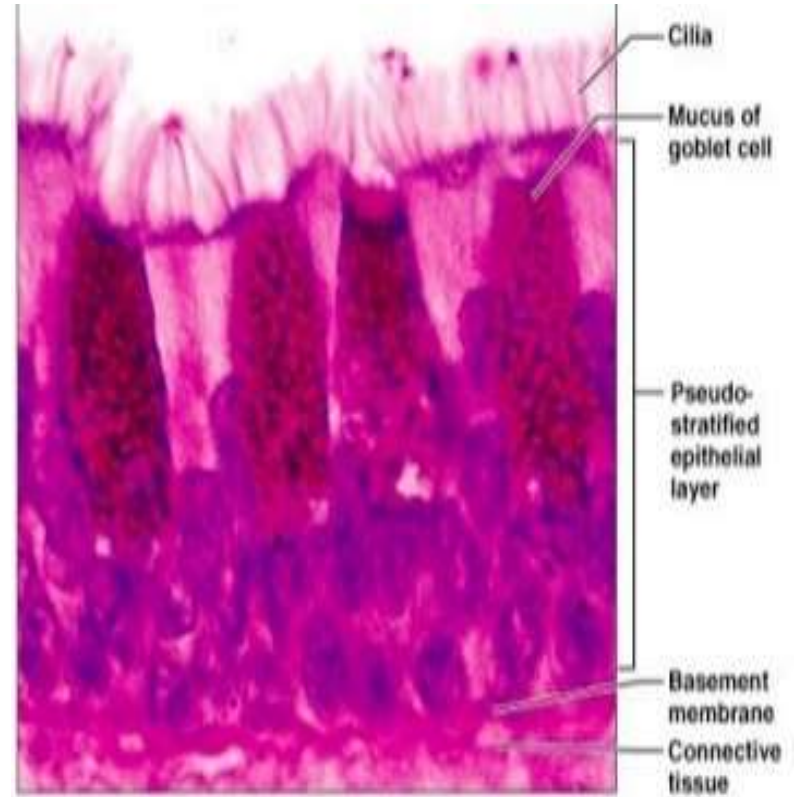
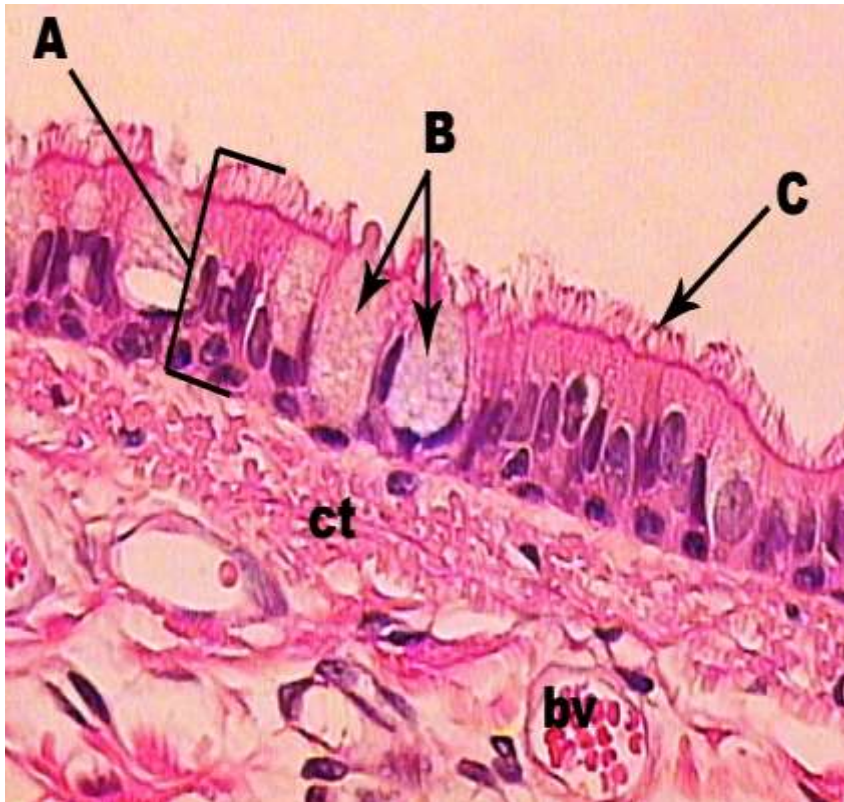


Glanda intestinala Lieberkuhn. Col. Tricromic Masson
IDENTIFICATI ELEMENTELE



Epiteliu pseudostratificat cilindric ciliat. Trahee. Col.HE

- 1.cili mobili (kinocili)
- 2.celulă caliciformă
- 3.membrana bazala
- 4.țesut conjunctiv
- 5.vas de sânge



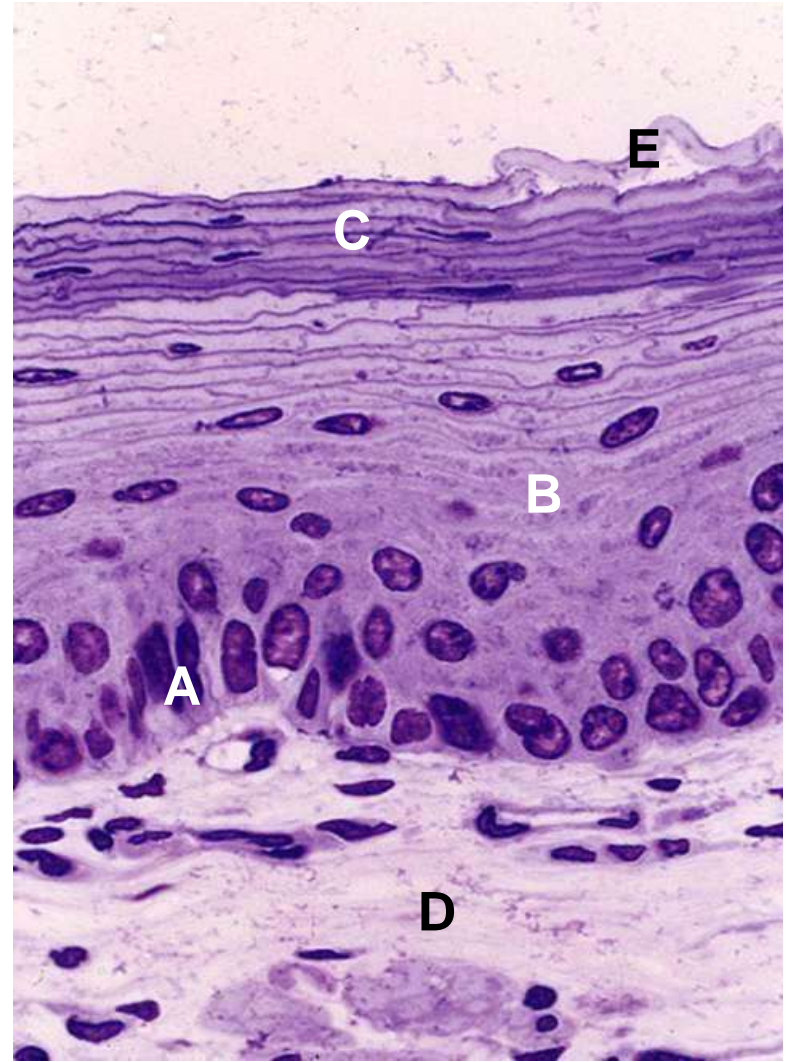
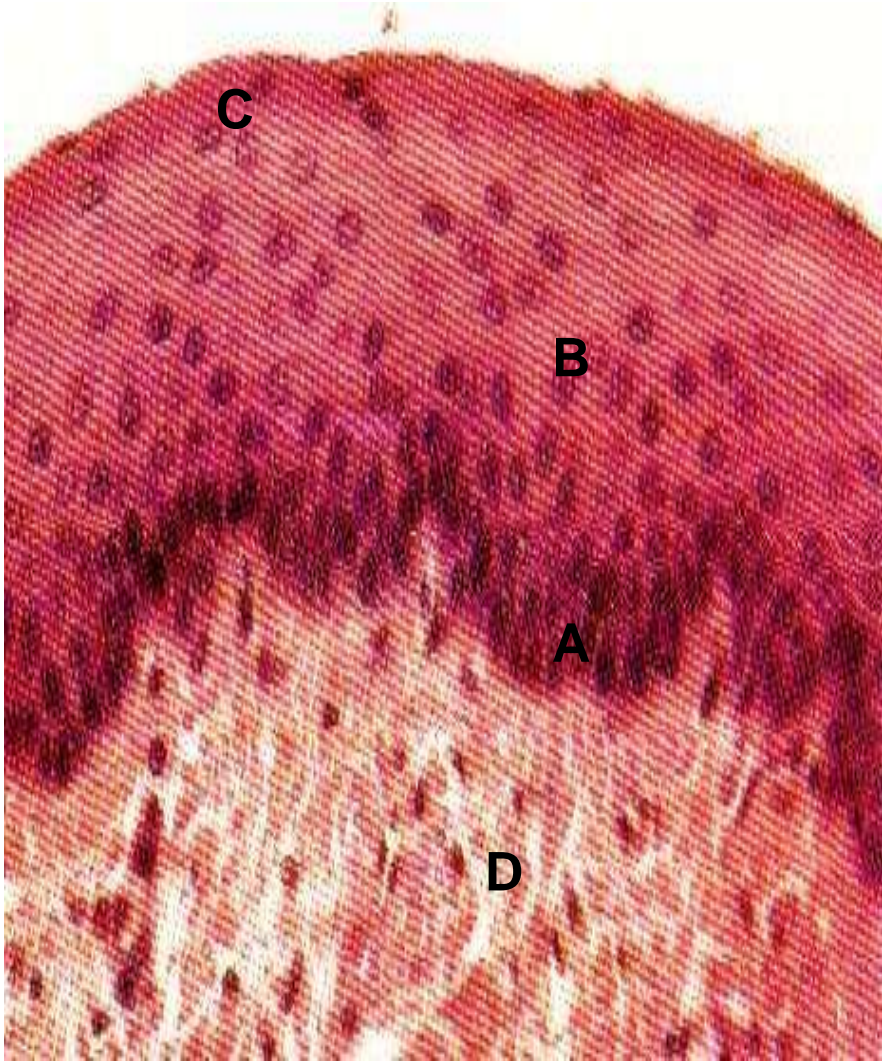
Colorație Hematoxină-Eozină

IDENTIFICAȚI TIPUL DE EPITELIU
ȘI ELEMENTELE INDICATE

Epiteliu pseudostratificat
Colorarea mucusului din
celulele caliciforme cu
mucicarmin



IDENTIFICAȚI TIPUL DE EPITELIU, COLORAȚIA ȘI
ELEMENTELE INDICATE



Epiteliu stratificat pavimentos fără keratinizare. Col. HE

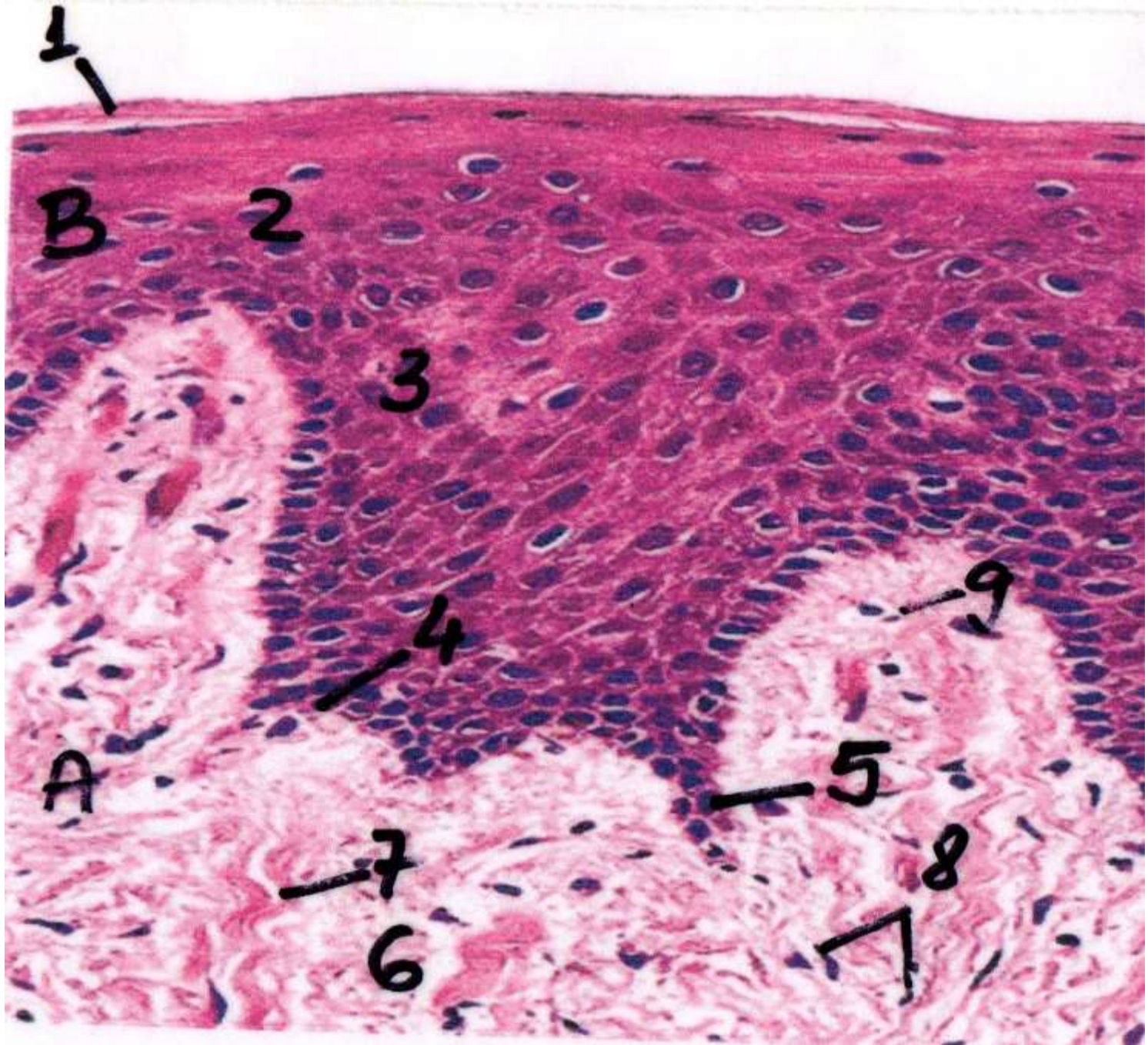
A.Strat bazal

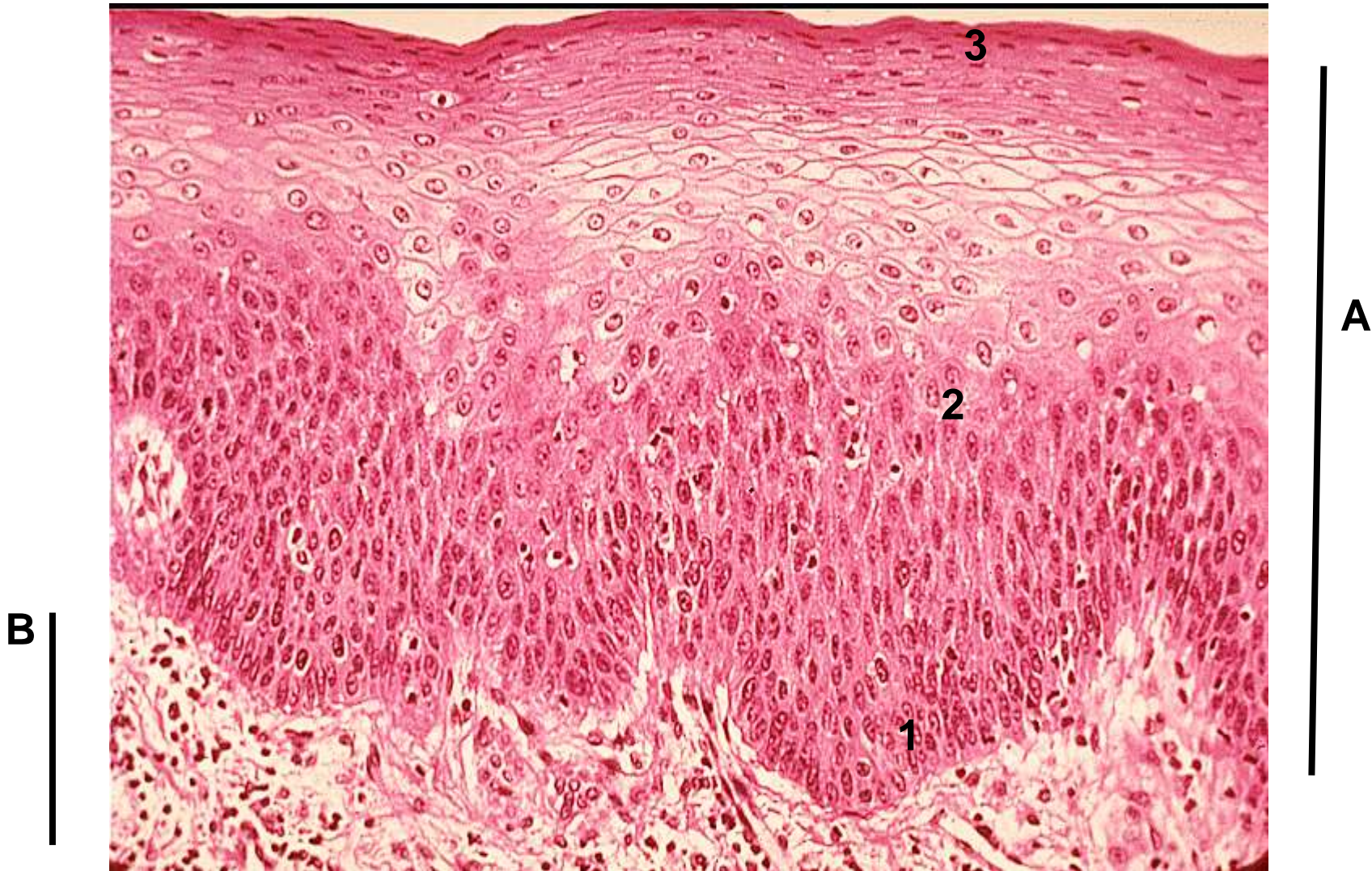
B.Strat intermediar (spinos)

C.Strat superficial

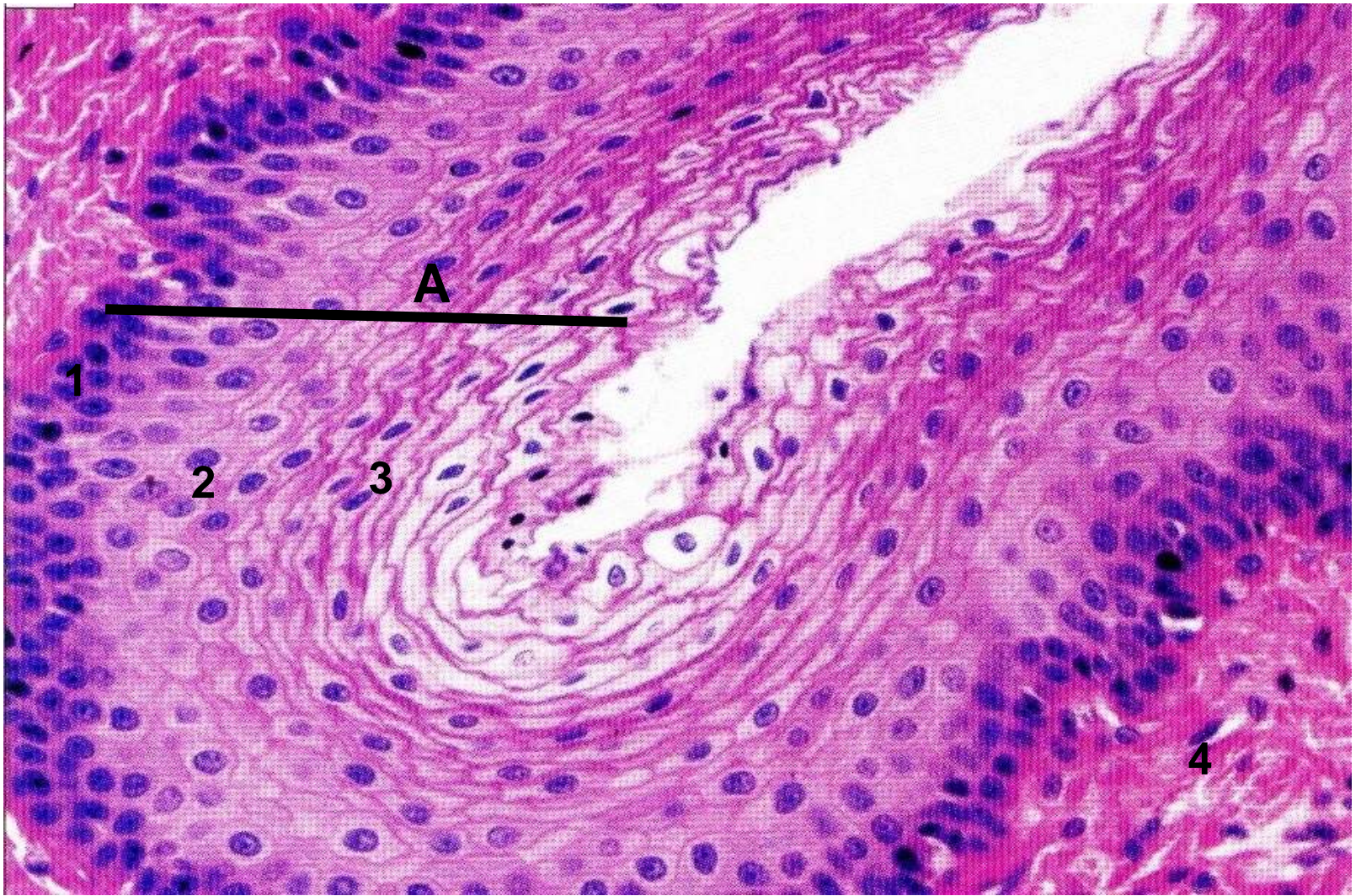
D.Tesut conjunctiv

E.Celule care se descuameaza

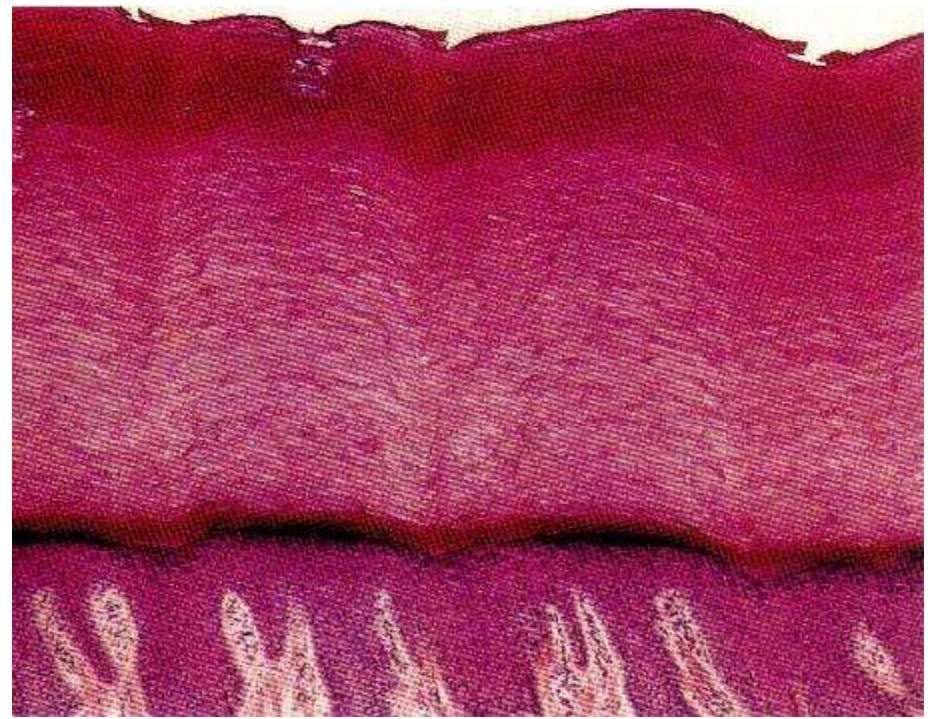
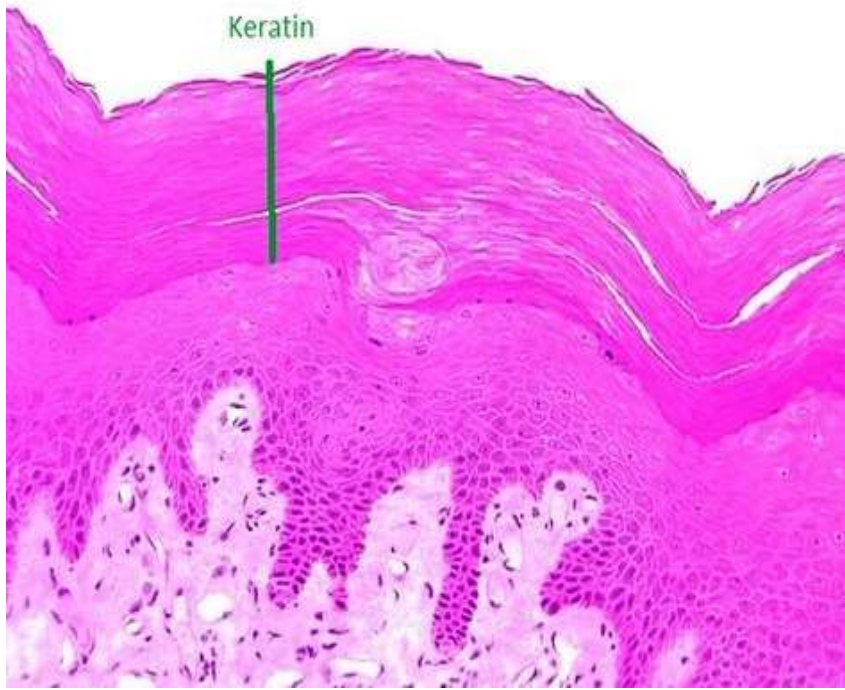




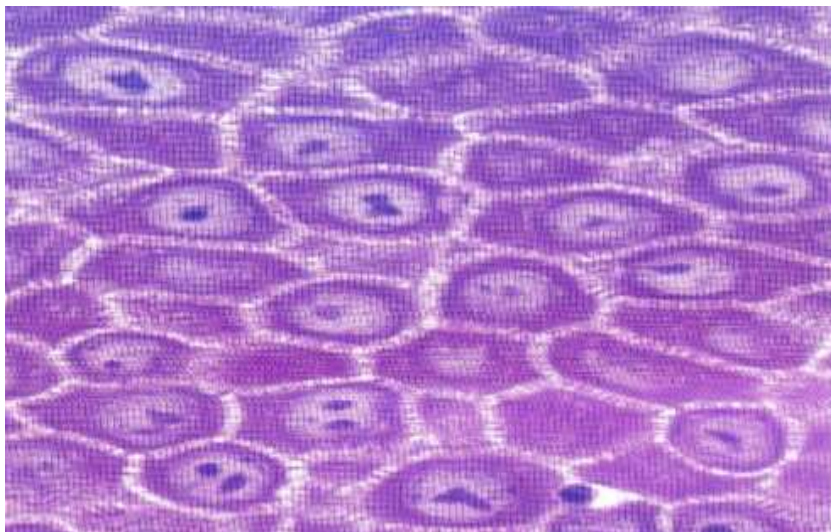
IDENTIFICAȚI TIPUL DE EPITELIU, ELEMENTELE
NUMEROTATE ȘI COLORAȚIA



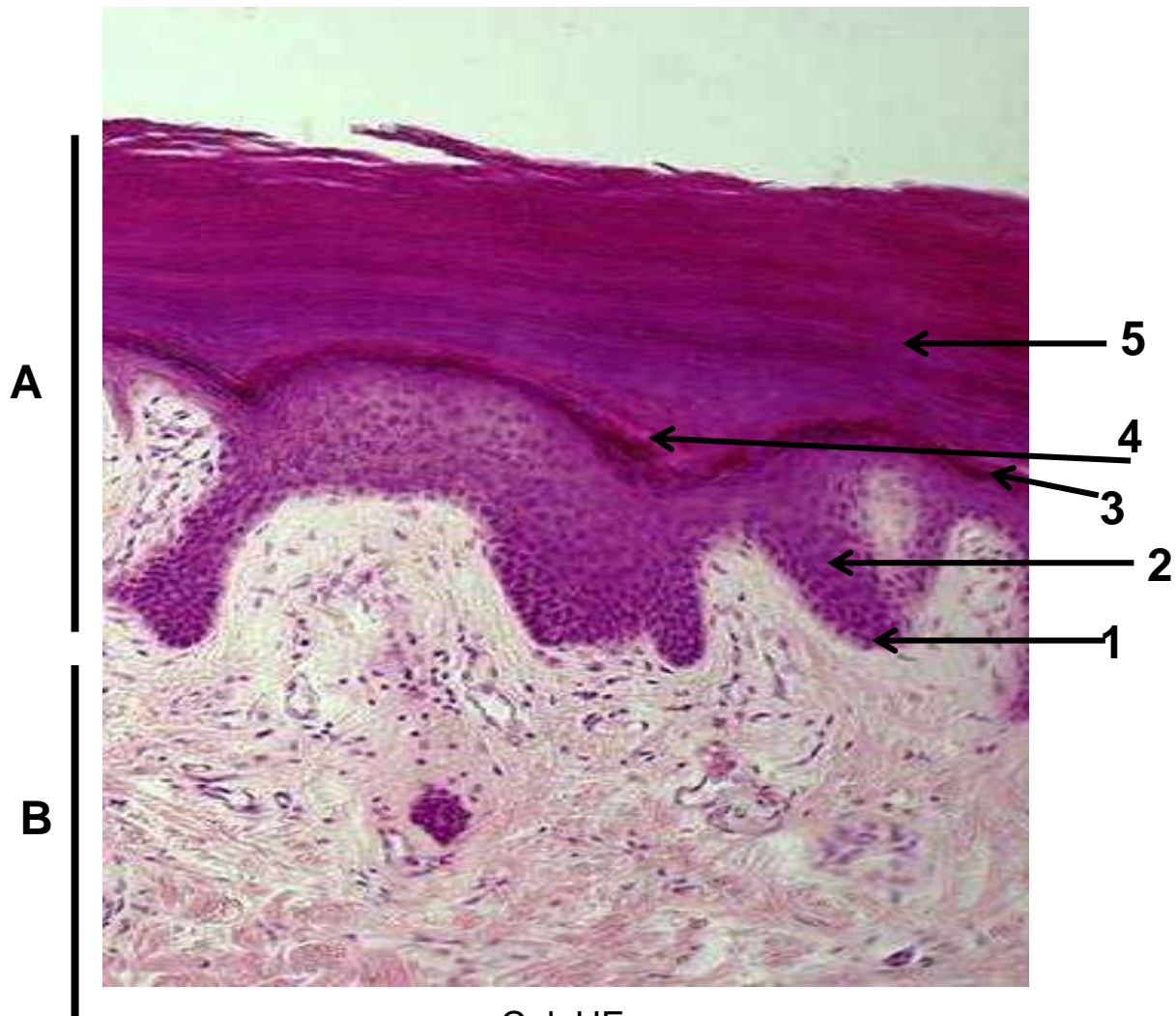
IDENTIFICATI TIPUL DE EPITELIU, ELEMENTELE NUMEROTATE ȘI
COLORAȚIA



Epiteliu stratificat pavimentos cu keratinizare. Epiderm Col. HE

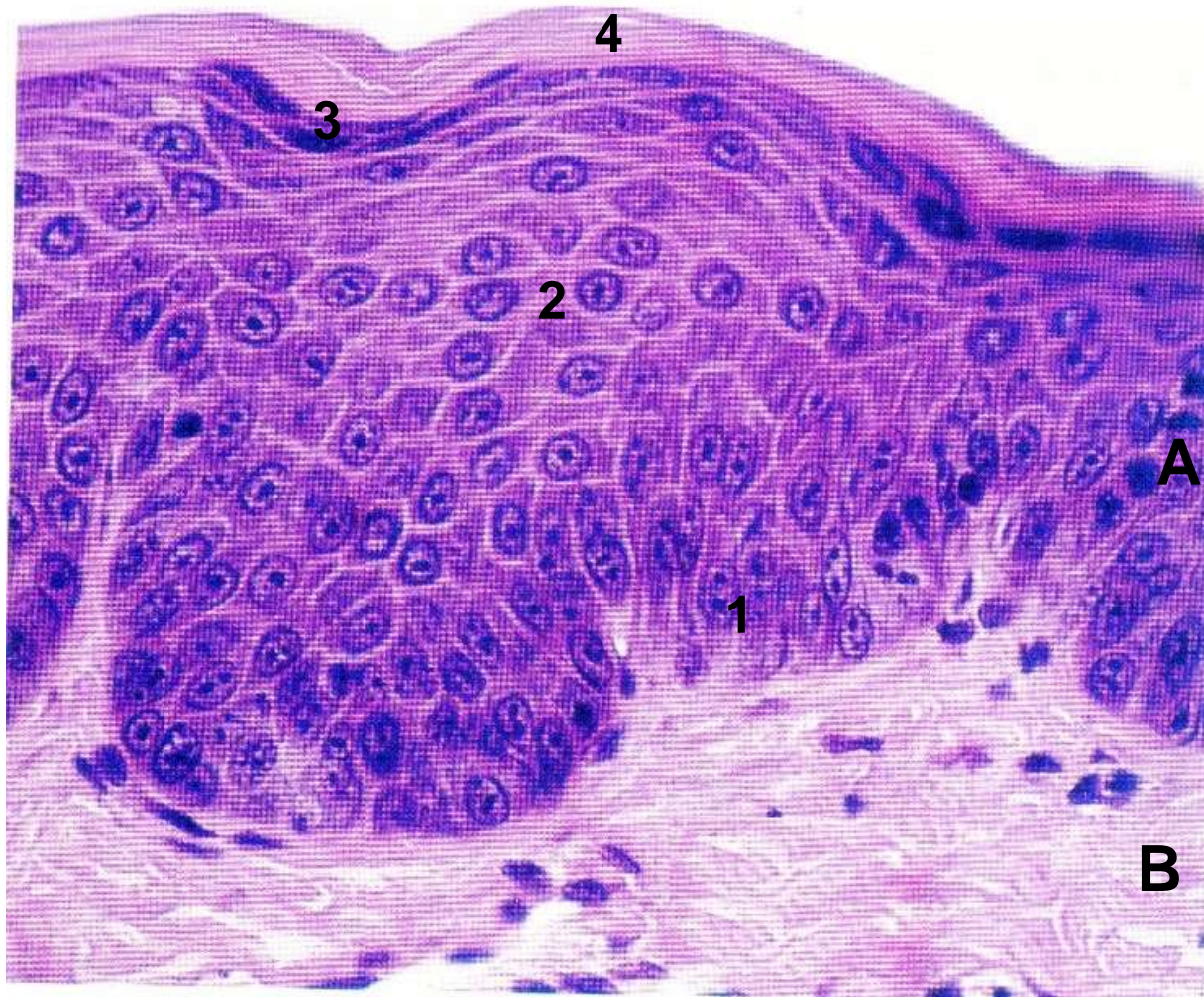


Detaliu din stratul spinos. Col.HE

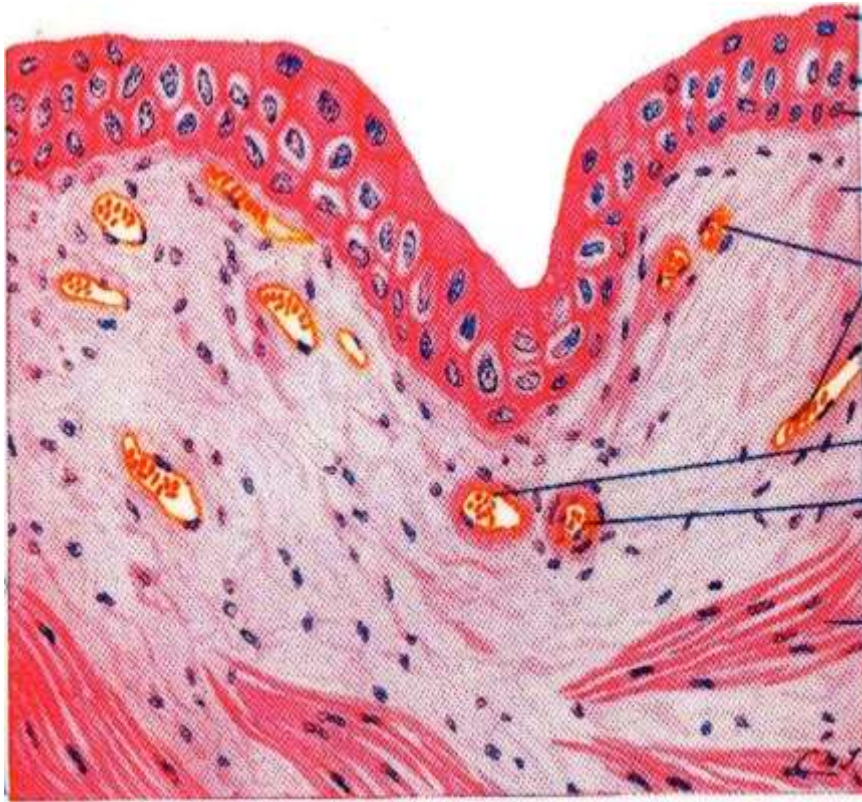


Col. HE

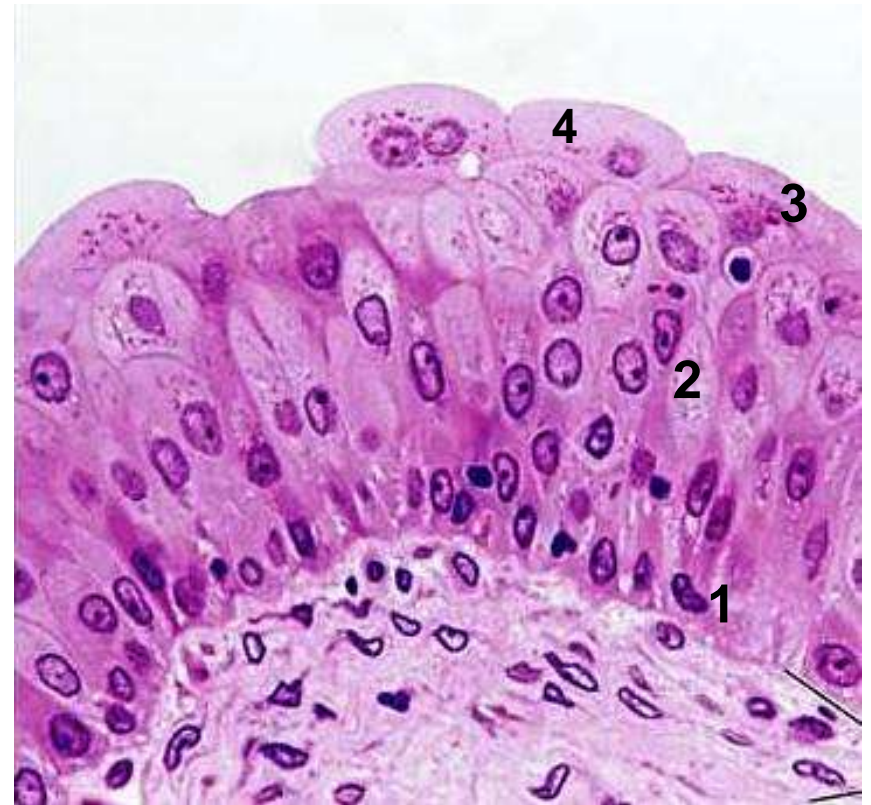
- A. Epiteliu stratificat pavimentos cu keratinizare. Epiderm
- B. Derm
- 1. strat bazal
- 2. strat spinos
- 3. strat granulos
- 4. strat lucios
- 5. strat cornos



Identificati elementele si coloratia

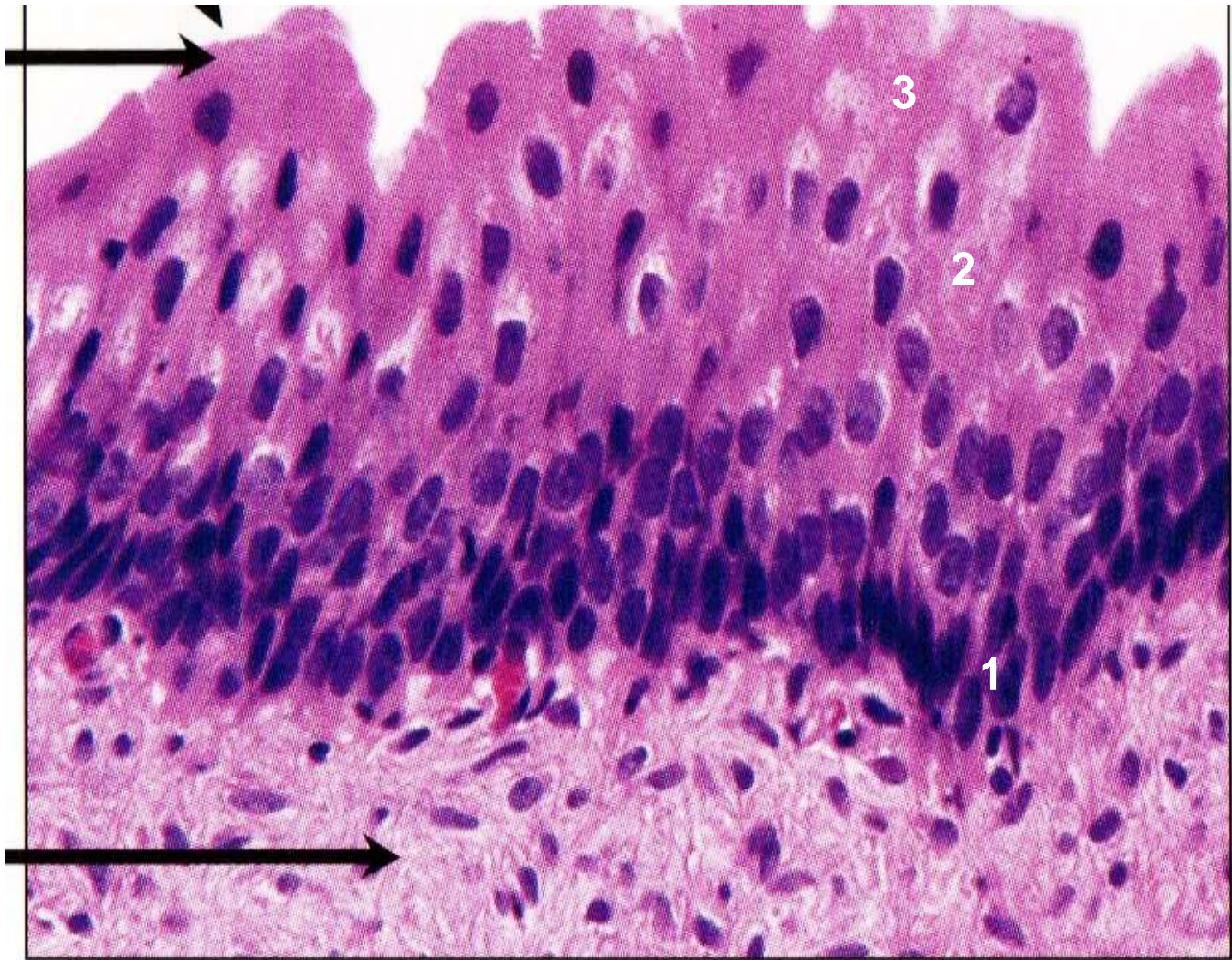


Epiteliu de tranziție
(paramalpighian/uroteliu). Schemă

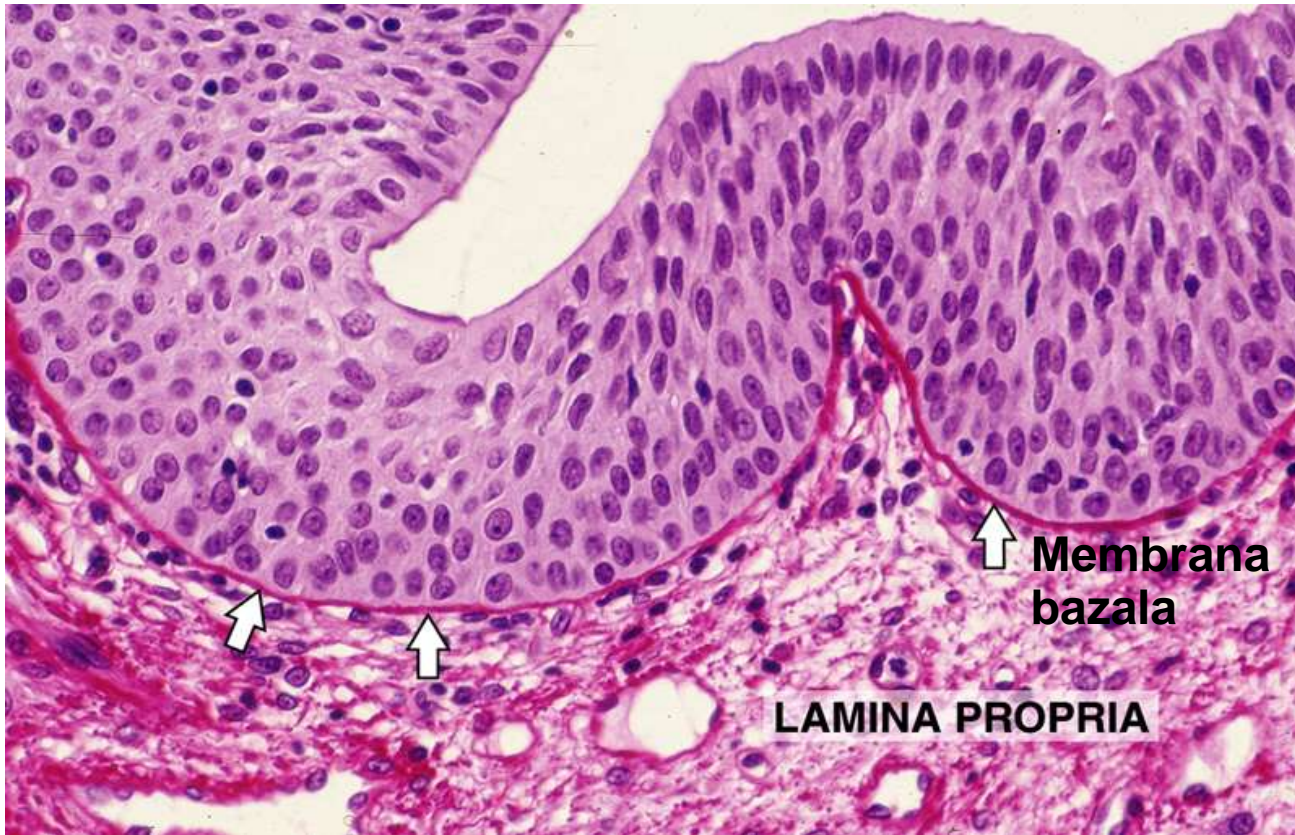


Epiteliu de tranziție. Uroteliu. Vezică
urinară. Col.HE

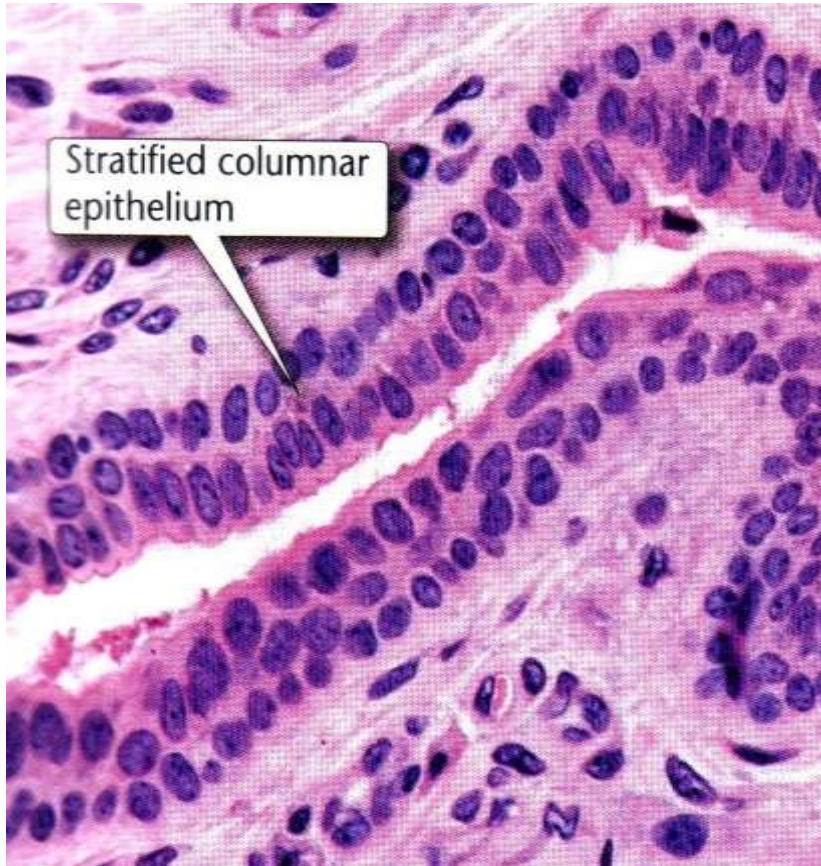
1. Strat bazal
2. Strat intermediar
3. Strat superficial
4. Celulă umbeliformă



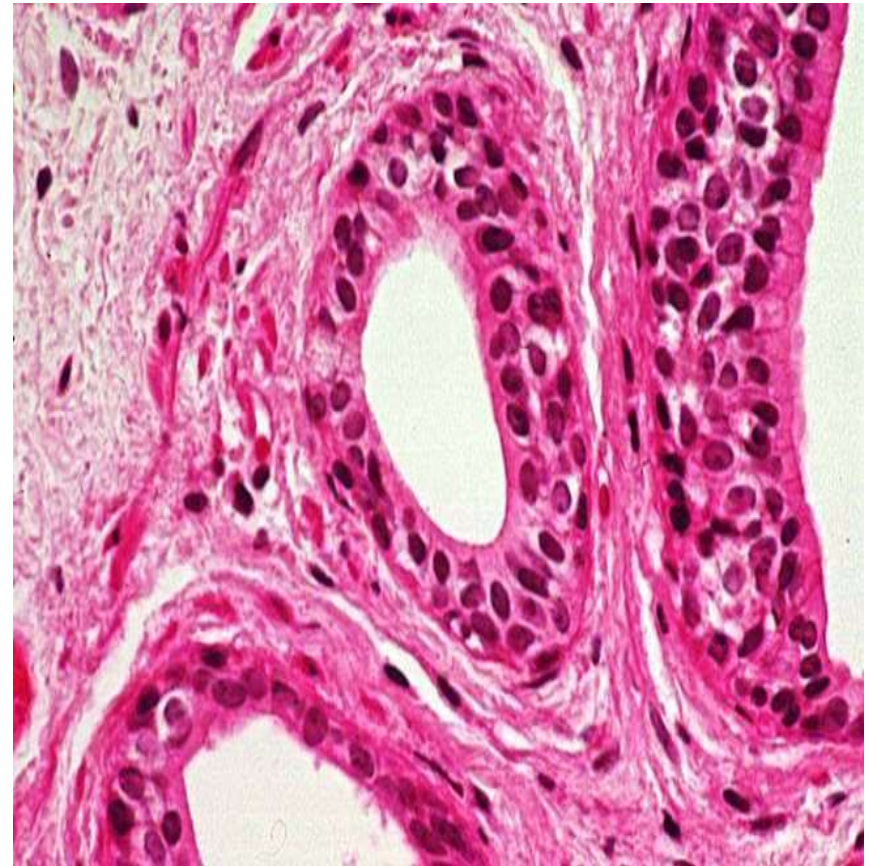
Coloratie Hematoxină-Eozină
IDENTIFICAȚI TIPUL DE EPITELIU ȘI ELEMENTELE
INDICATE DE SĂGETI ȘI CIFRE



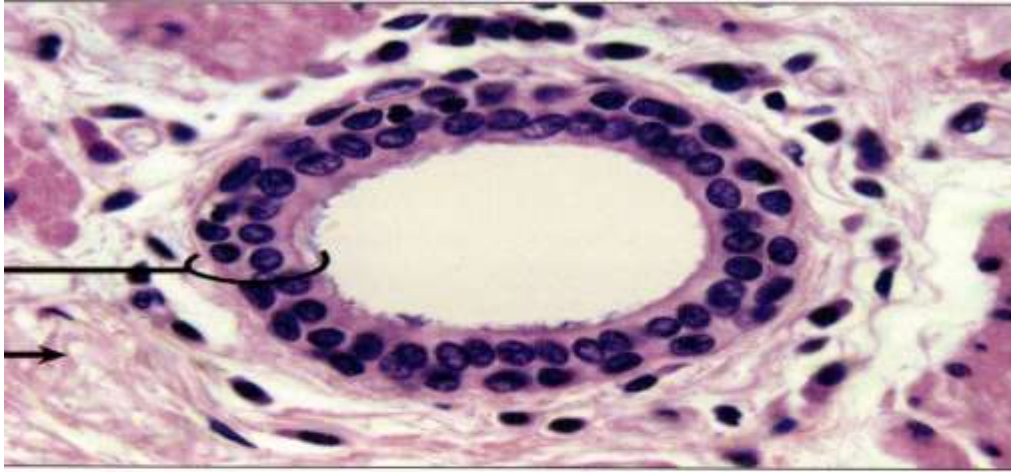
Epiteliu stratificat cilindric. Coloratie PAS-Hematoxină



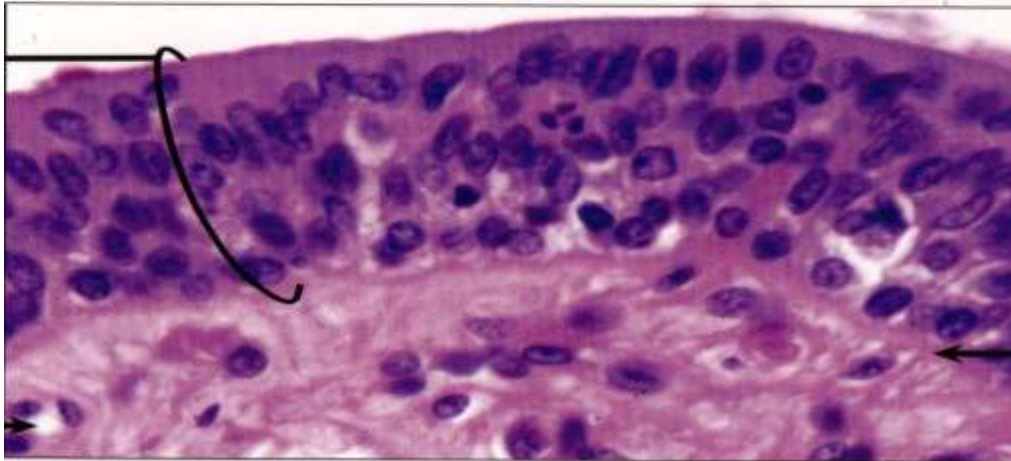
Epiteliu stratificat cilindric. Canal excretor glandă salivară. Col.HE



Epiteliu bistratificat cubic. Canal excretor extralobular al glandei salivare. Col.HE

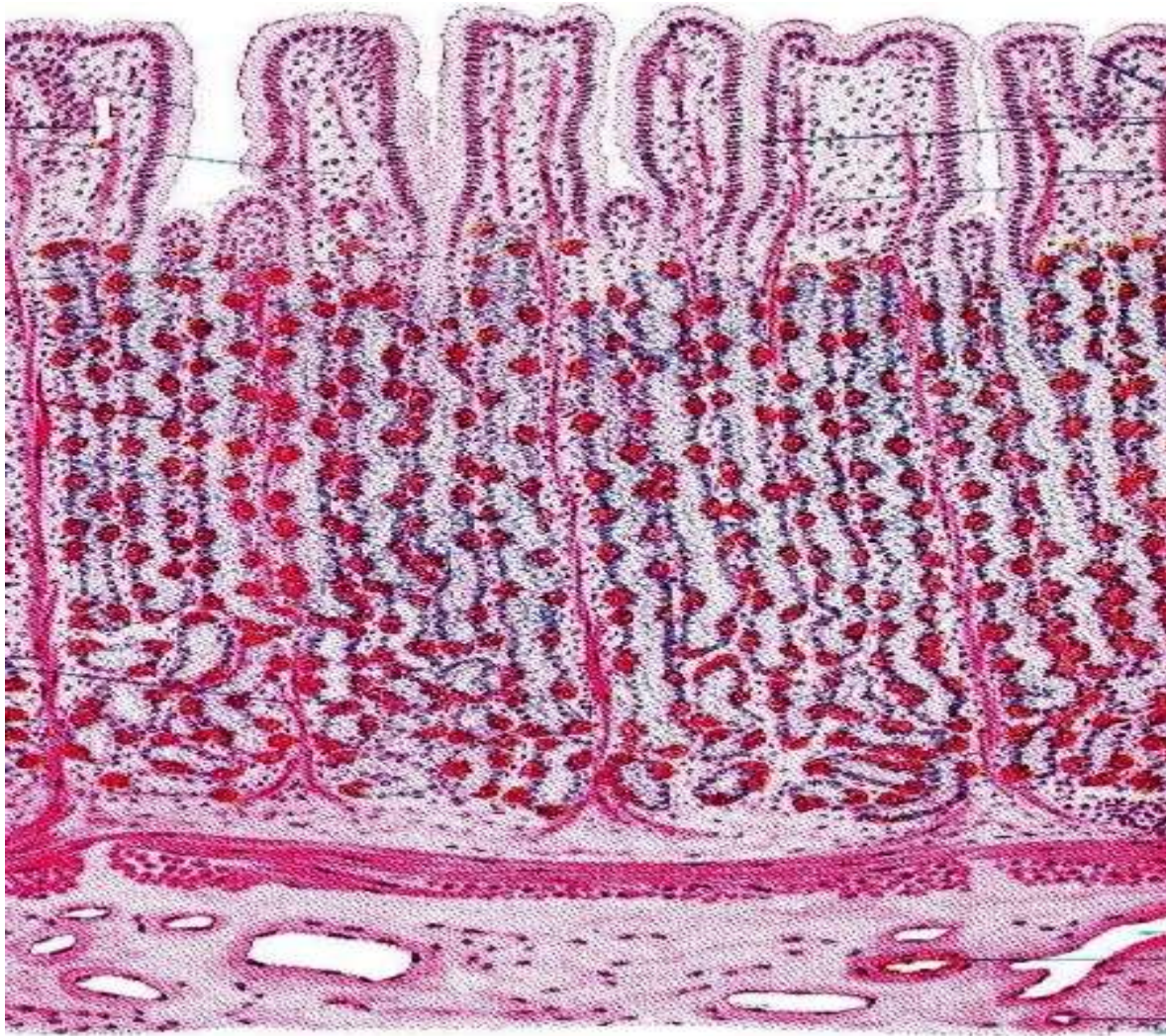


Identificați tipul de epiteliu și
colorația



Identificați tipul de epiteliu și
colorația

EPITELII GLANDULARE

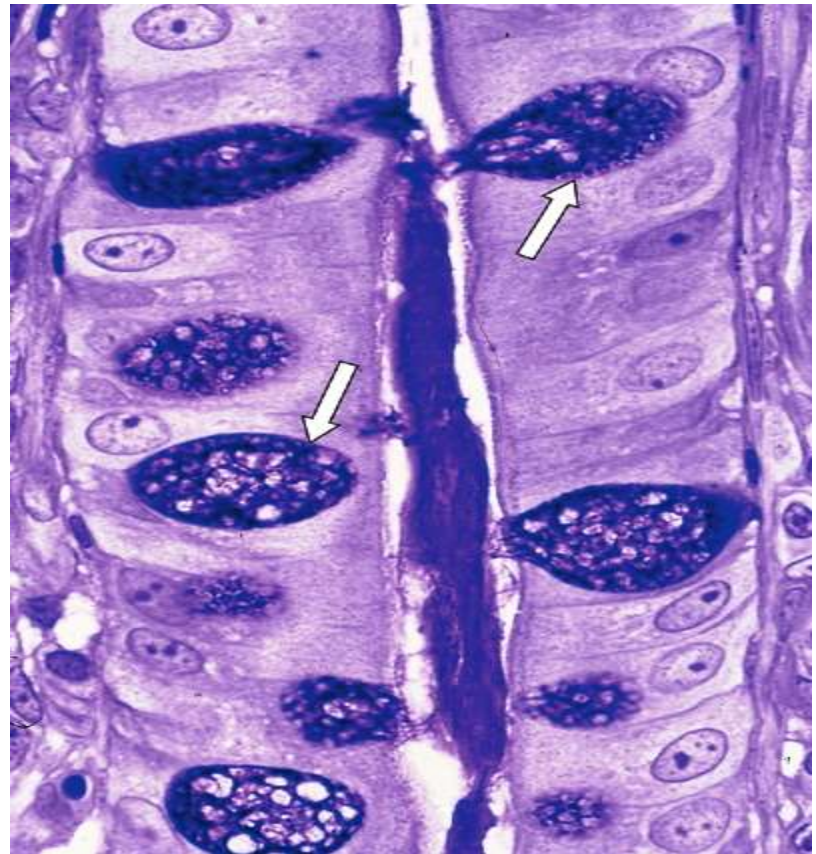


Glande exocrine tubulare sinuoase. Glande gastrice din regiunea fundică a stomacului. Schemă

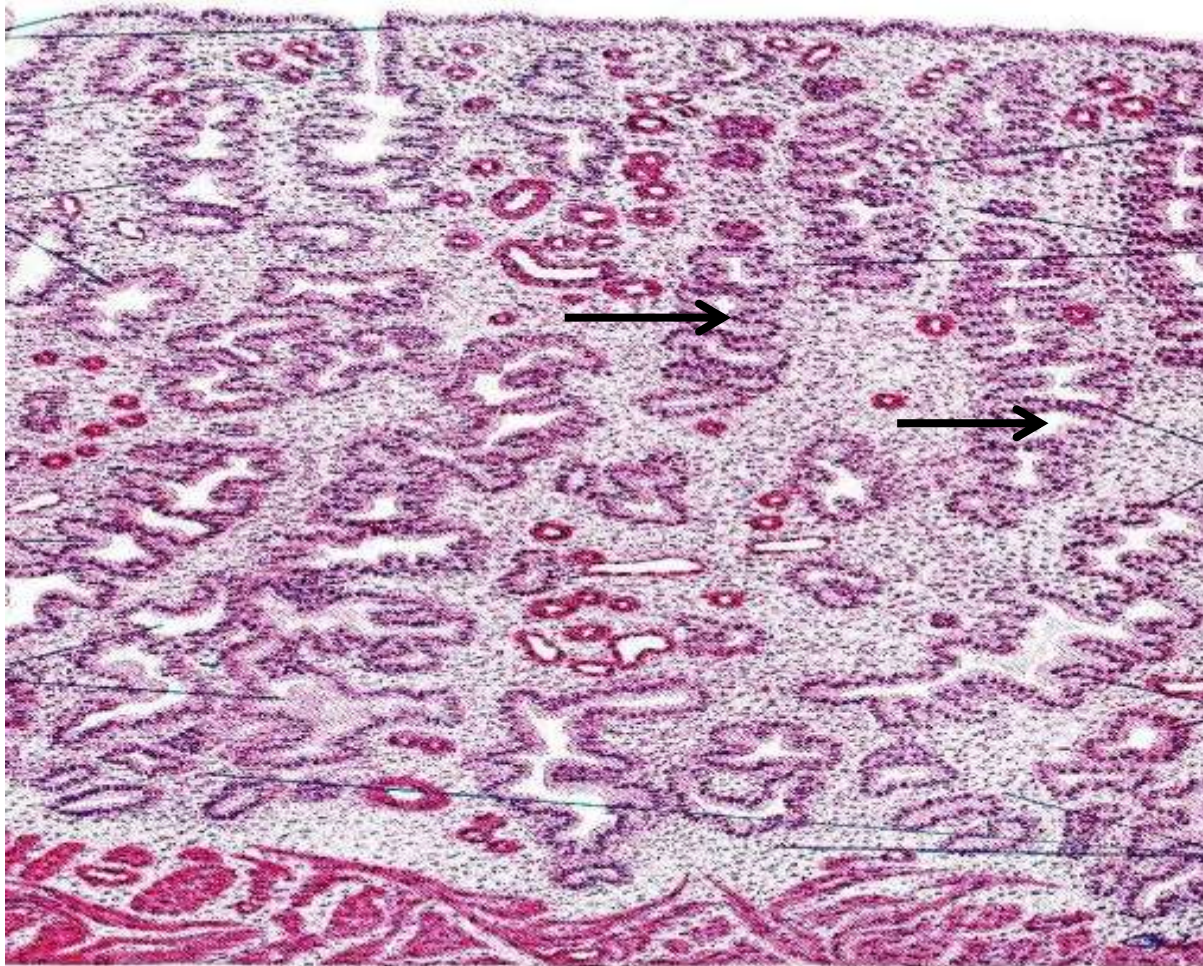


Schemă

- A. Glande gastrice cardiale – glande tubulare drepte care devin sinuoase in profunzime
- B. Glande gastrice fundice – glande tubulare sinuoase



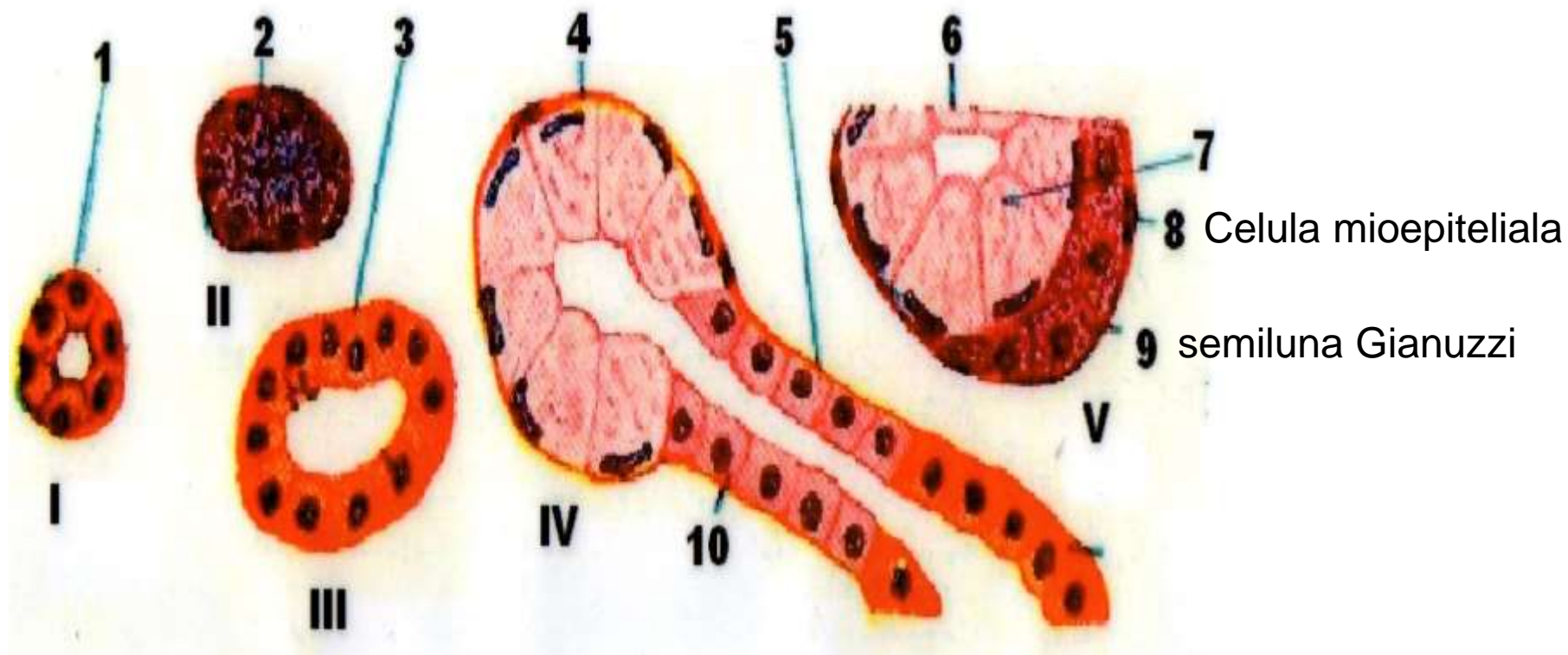
Glanda exocrina tubulară dreaptă.
Glanda intestinala Lieberkuhn.



Glande exocrine tubulare sinuoase. Glande endometriale in faza progesteronică. Col. HE

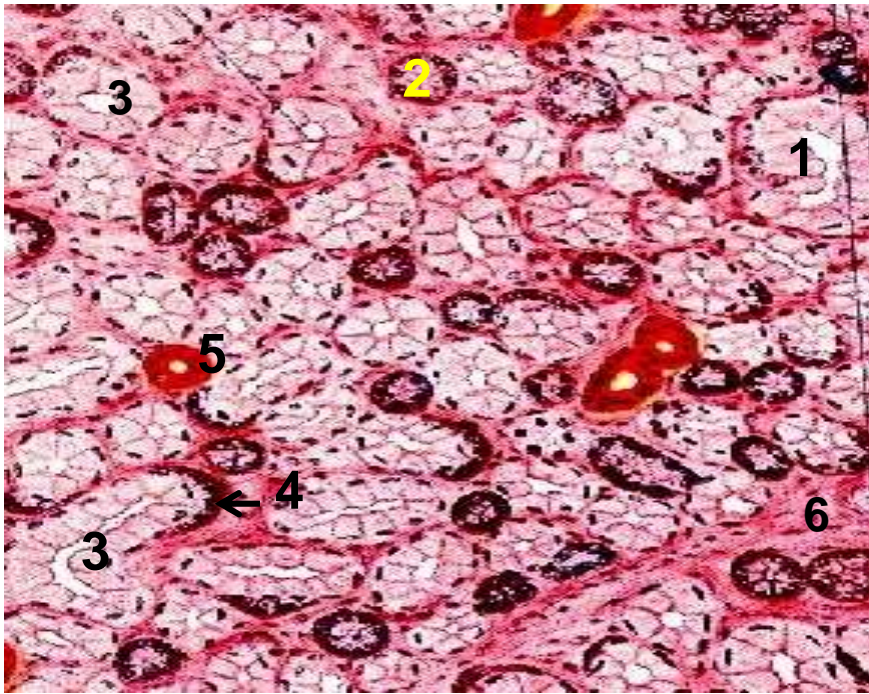


Glanda tubulară glomerulată. Glandă sudoripară. Col. HE



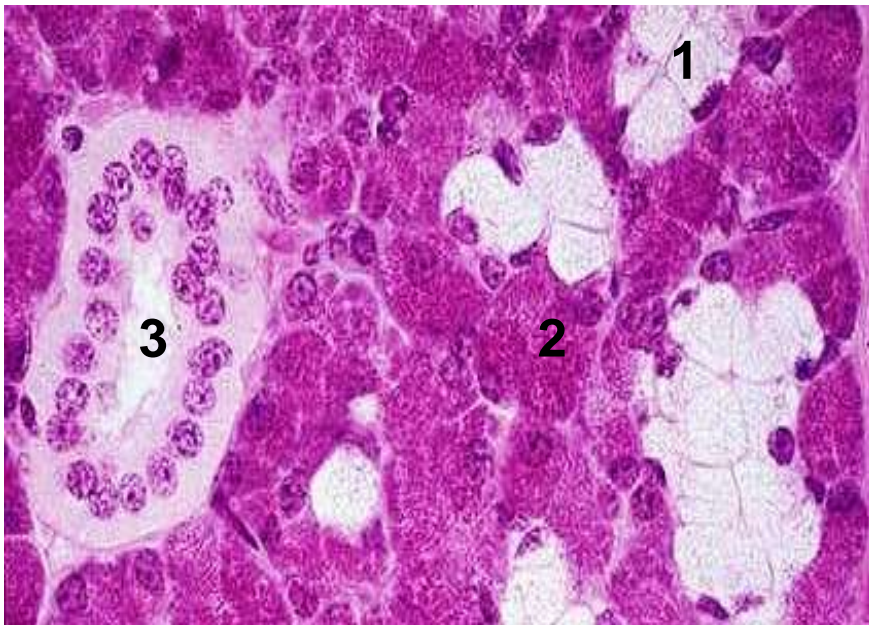
SCHEMĂ GLANDĂ SALIVARĂ

- I. Duct excretor intralobular – epiteliu simplu cubic
- II. Acin seros
- III. Duct excretor
- IV. Acin mucos
- V. Acin mixt muco-seros



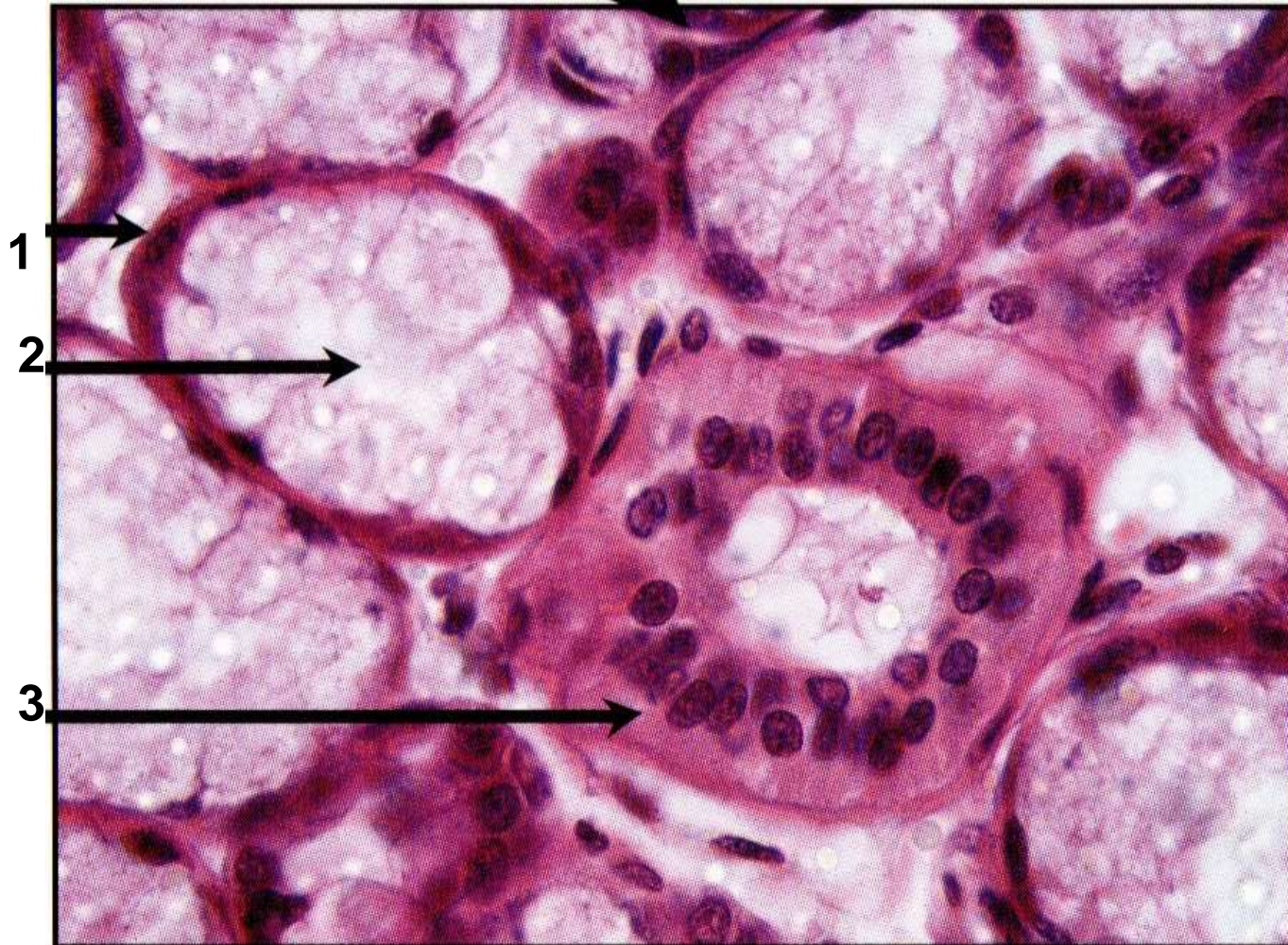
Glandă salivară mixtă.

1. acin mucos
2. acin seros
3. acin mixt muco-seros
4. semiluna Gianuzzi
5. duct excretor
6. tesut conjunctiv (stromă)

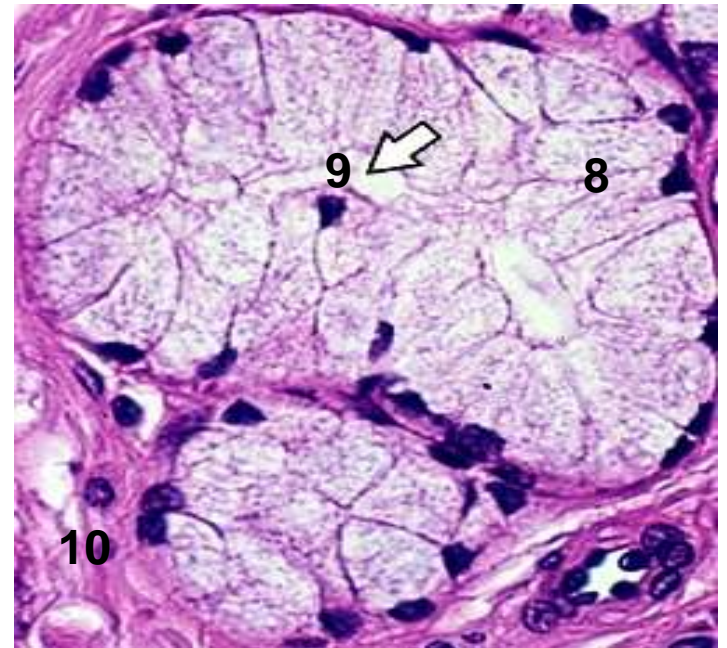
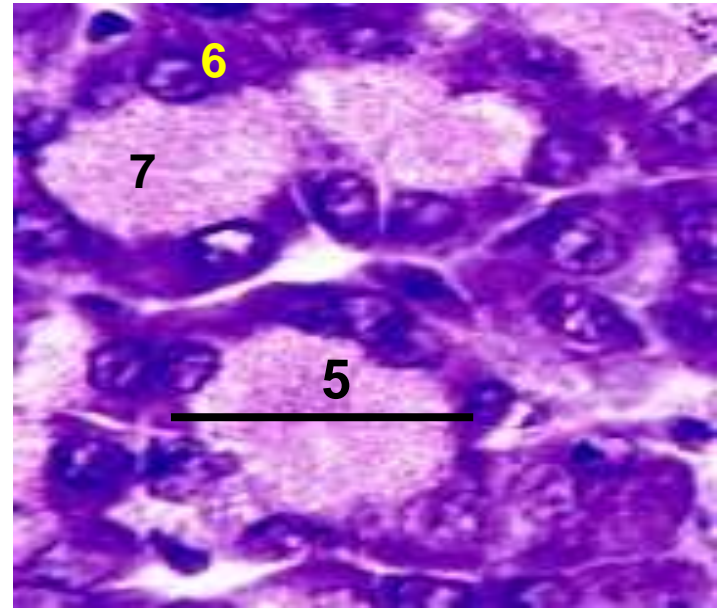
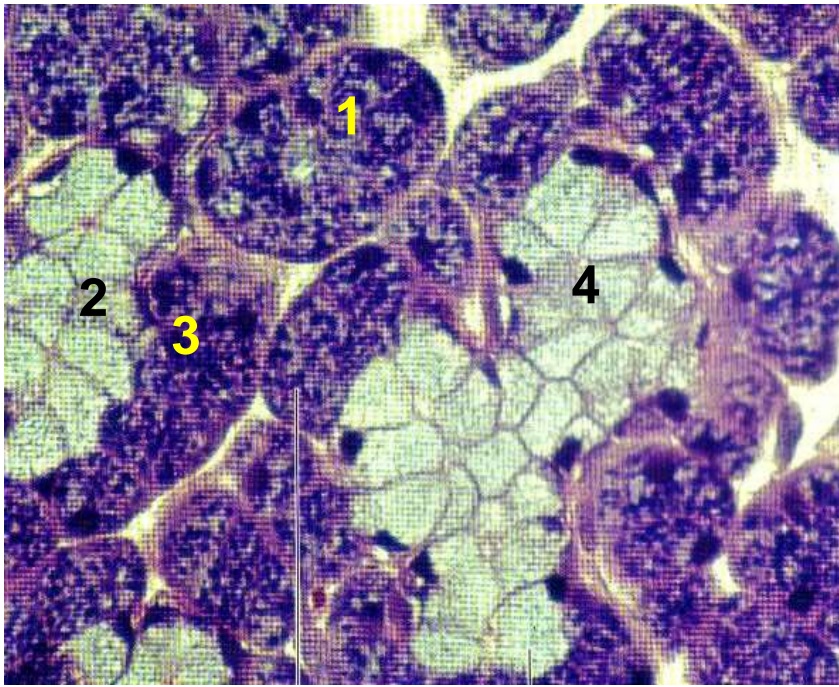


Glandă salivară mixtă. Col.HE

1. acin mucos
2. acin seros
3. duct excretor

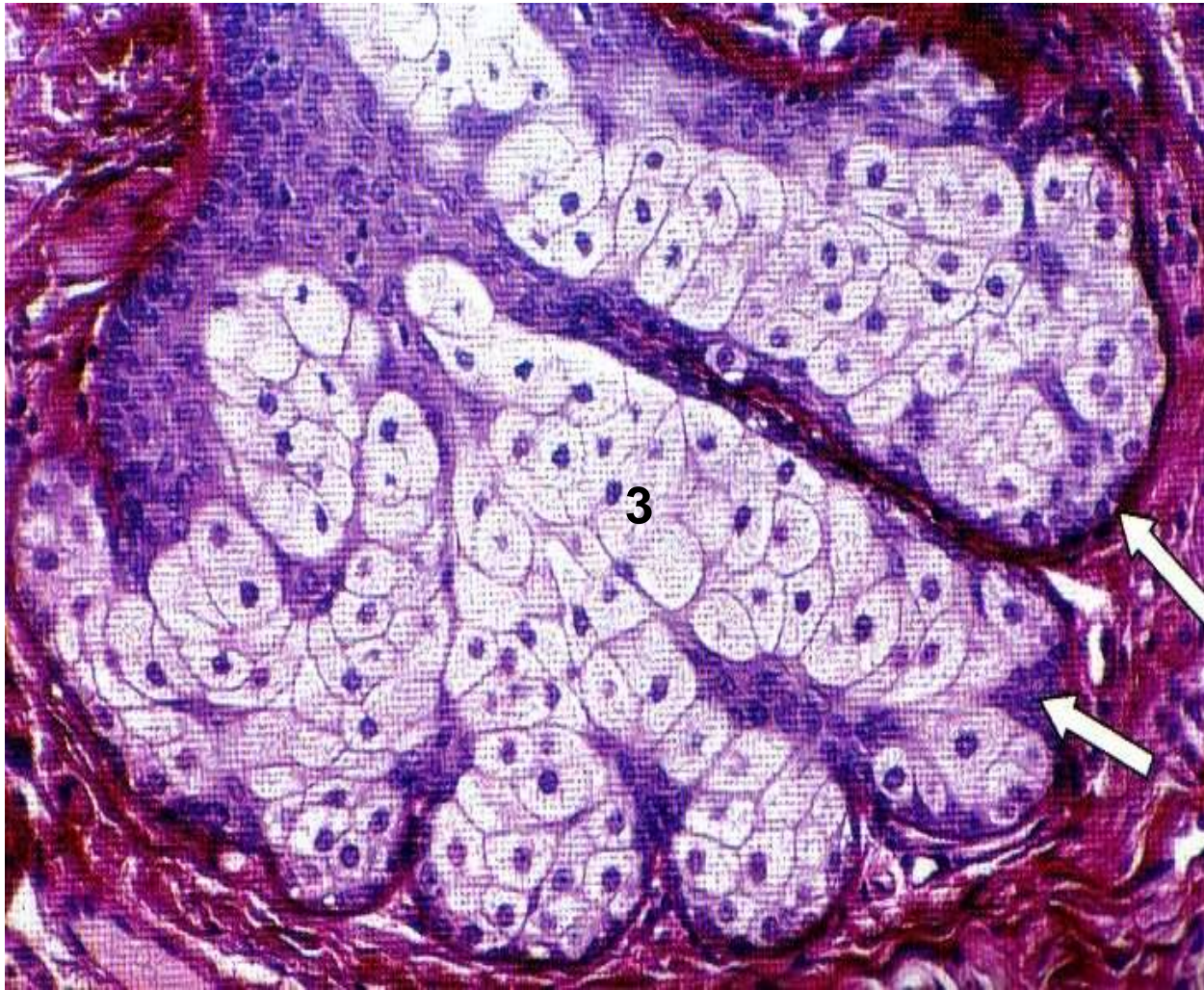


Glandă salivară mucoasă. Col.HE

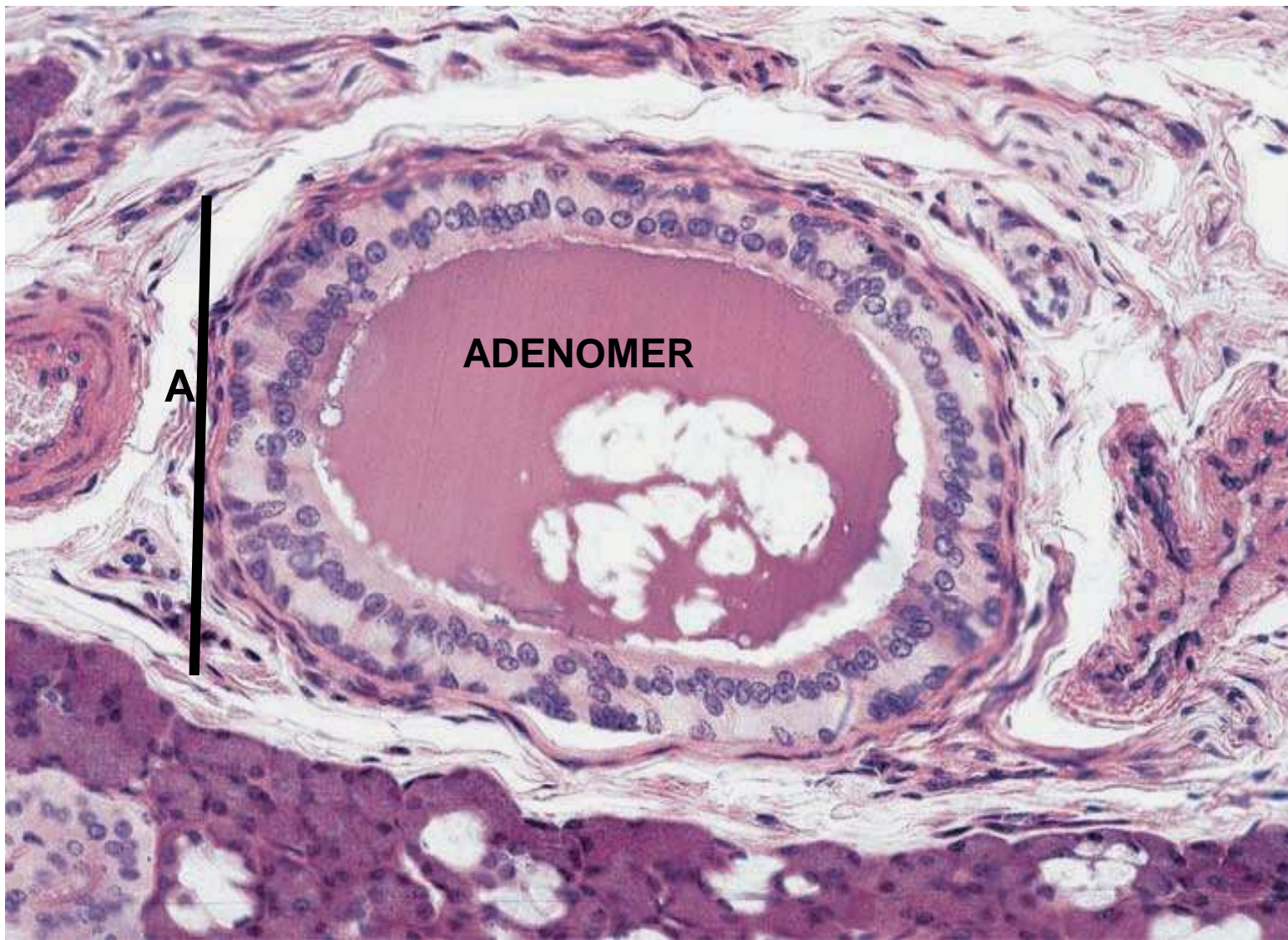


Glande salivare

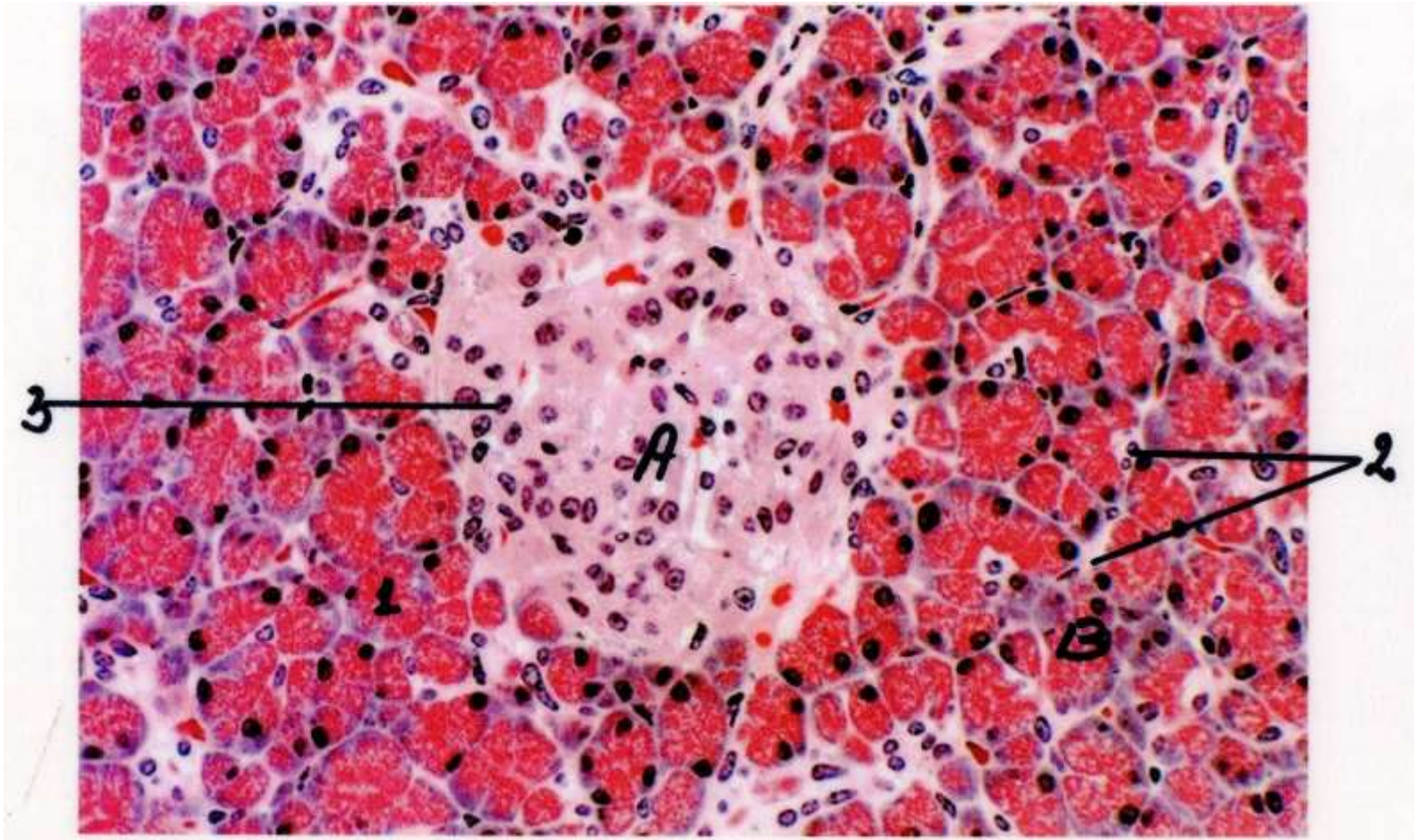
IDENTIFICATI ELEMENTELE SI
COLORATIA



Glandă alveolară plină. Glanda sebacee. Col. PAS Hematoxină

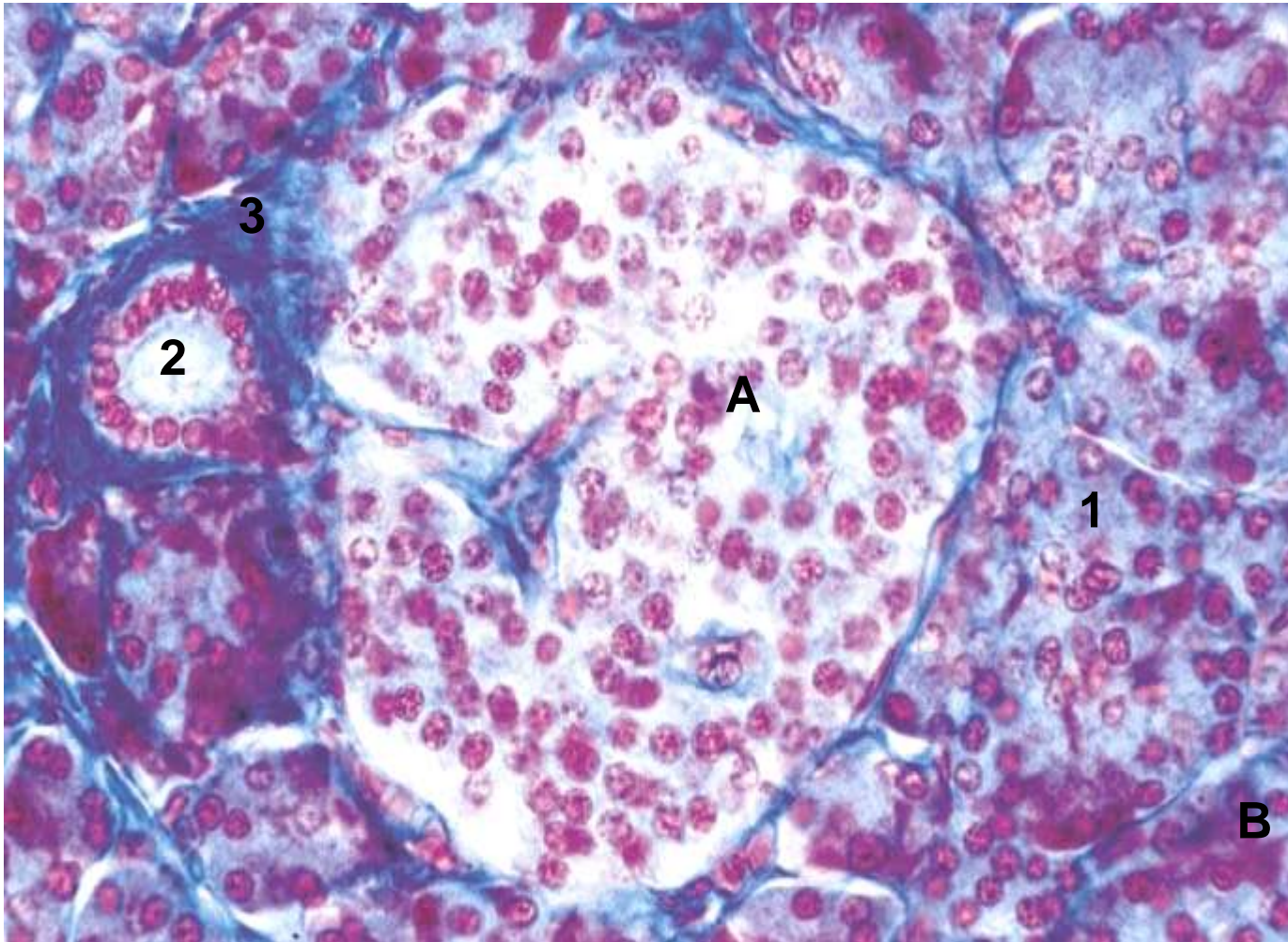


Glandă alveolară goală. Prostata. Col. HE



Pancreas. Col. HE

- A. Insulă Langerhans (glandă endocrină cordonală)
- B. Pancreas exocrin (acini seroși)



Pancreas. Coloratie tricromic Masson

IDENTIFICAȚI ELEMENTELE